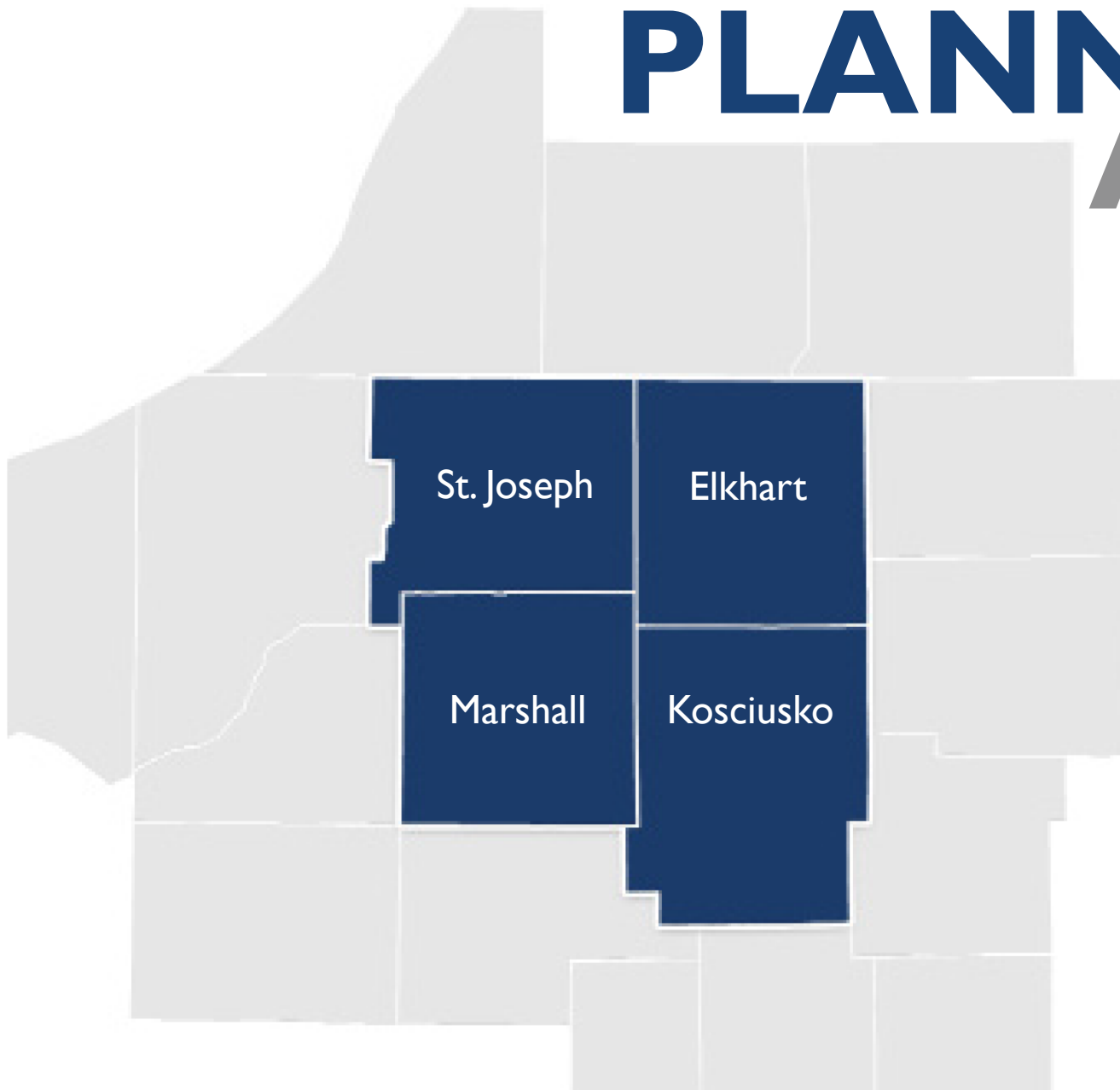


US 30 PUBLIC MEETING



PLANNING AREA



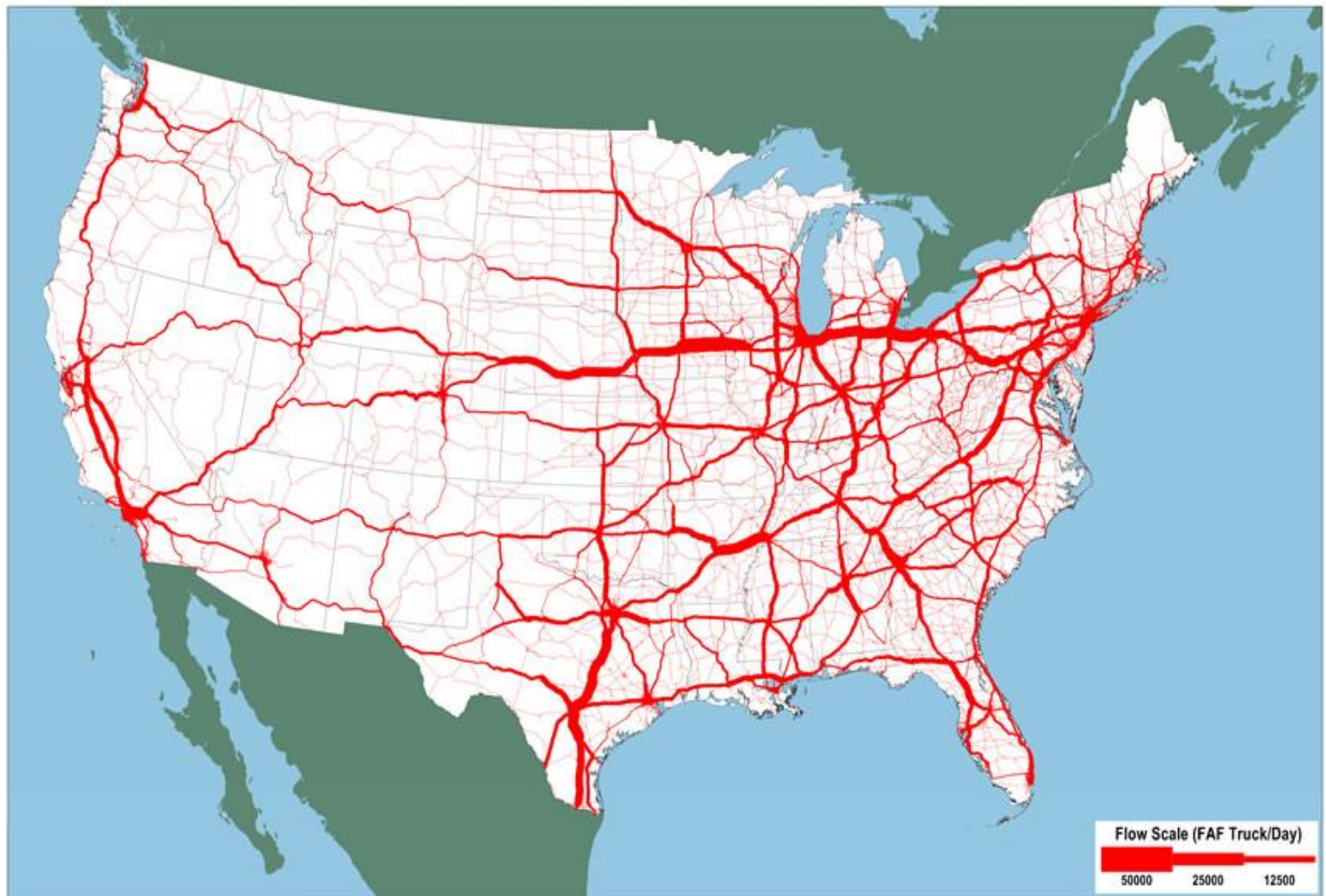
MISSION

Study and attempt to resolve, for the benefit of local governments and the region, areas of interlocal issues, which includes but is not limited to transportation, transit, economic development, environment, and other issues that impact the region.

TRAFFIC STATS



Average Daily Long-Haul Truck Traffic on the National Highway System: 2015



Note: Major flows include domestic and international freight moving by truck on highway segments with more than twenty five FAF trucks per day and between places typically more than fifty miles apart.

Source: U.S. Department of Transportation, Federal Highway Administration, Office of Freight Management and Operations, Freight Analysis Framework, version 4.3, 2017.

Average Daily Long-Haul Truck Traffic on the National Highway System: 2045



Note: Major flows include domestic and international freight moving by truck on highway segments with more than twenty five FAF trucks per day and between places typically more than fifty miles apart.

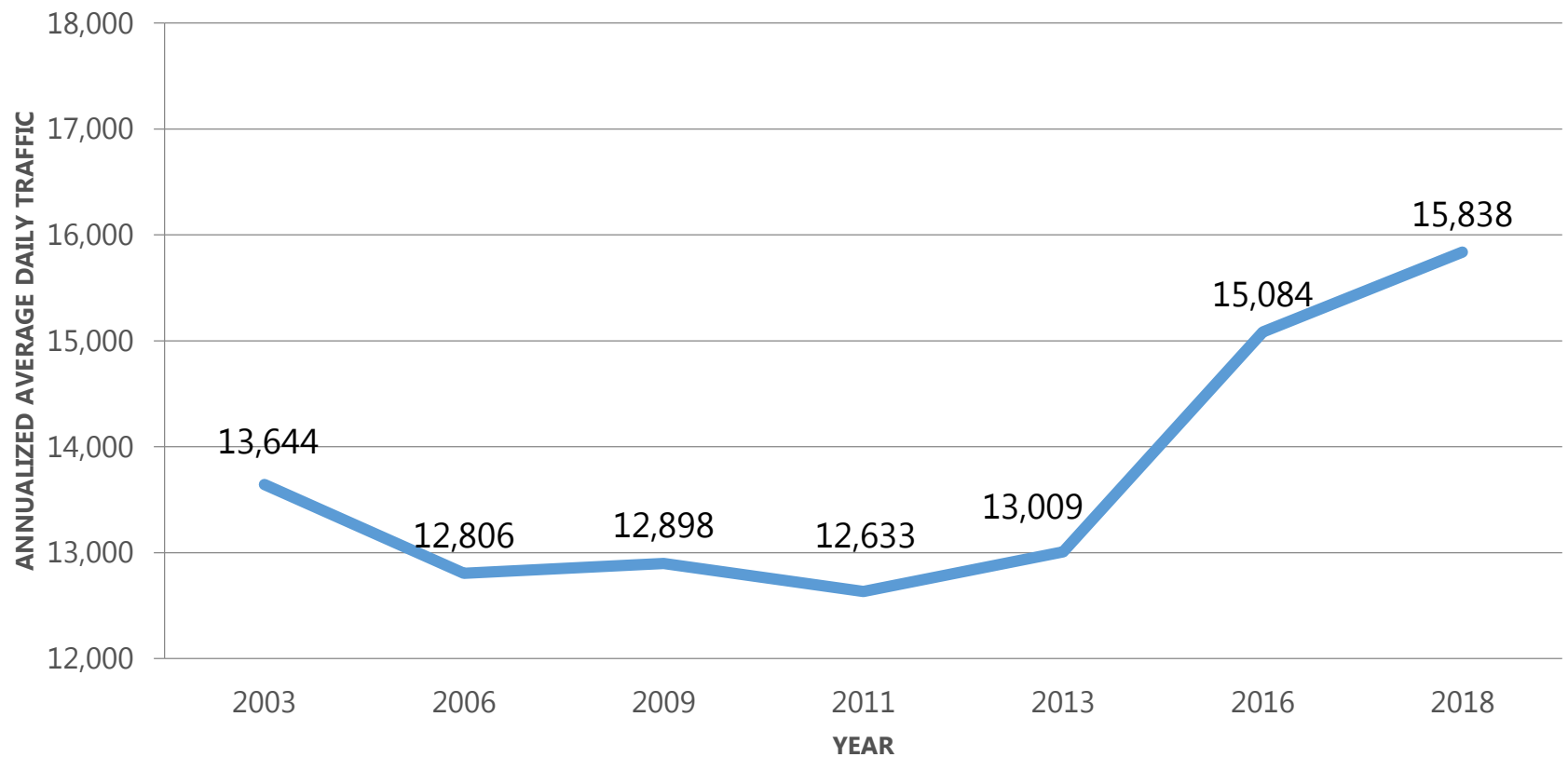
Source: U.S. Department of Transportation, Federal Highway Administration, Office of Freight Management and Operations, Freight Analysis Framework, version 4.3, 2017.

TRAFFIC GROWTH



TRAFFIC STATS

US 30 between Beech and SR 19



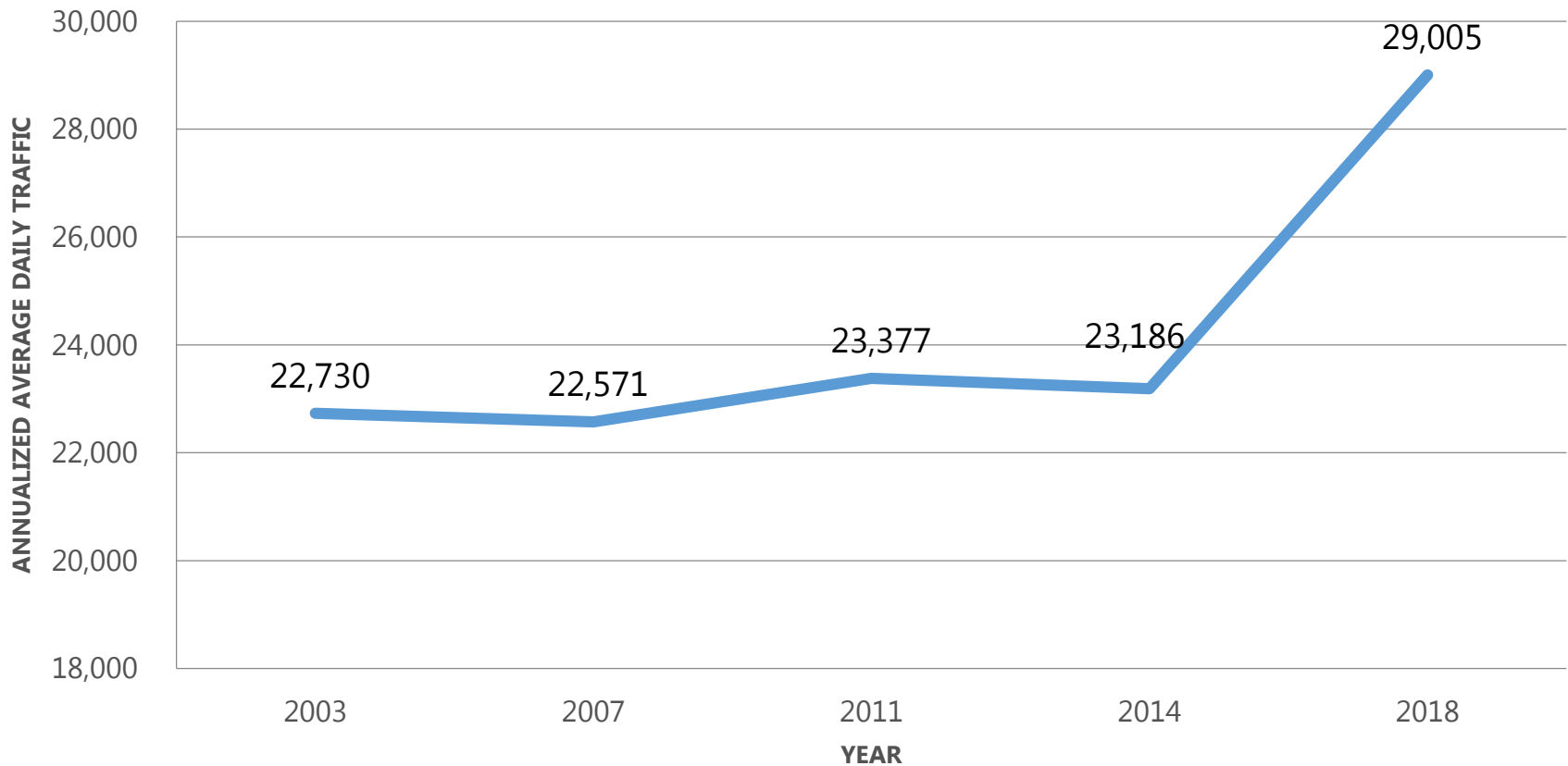
TRAFFIC STATS



Approx.
39%
of Traffic is
Truck Traffic

TRAFFIC STATS

US 30 between Parker and Center



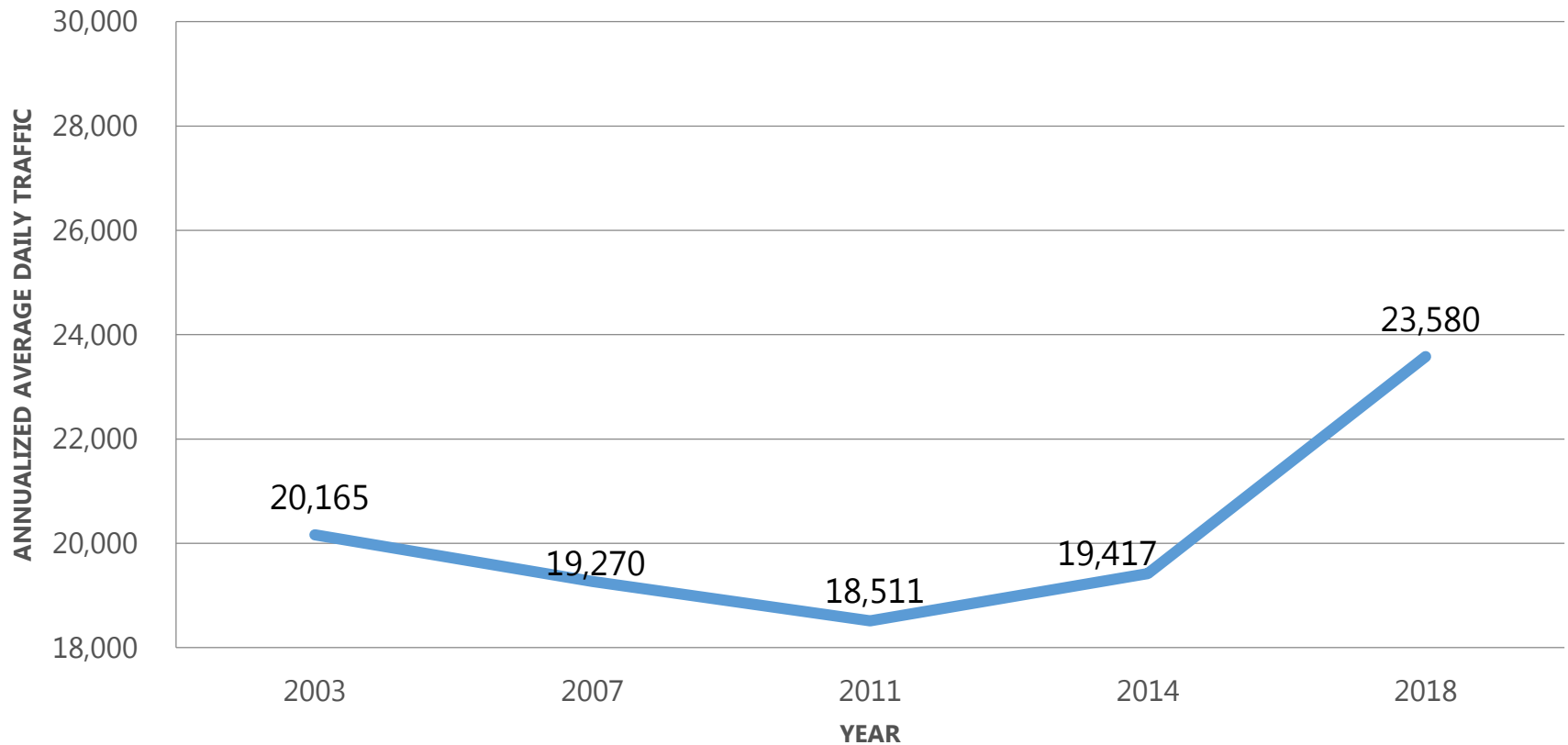
TRAFFIC STATS



Approx.
23%
of Traffic is
Truck Traffic

TRAFFIC STATS

US 30 between 150 W and SR 15

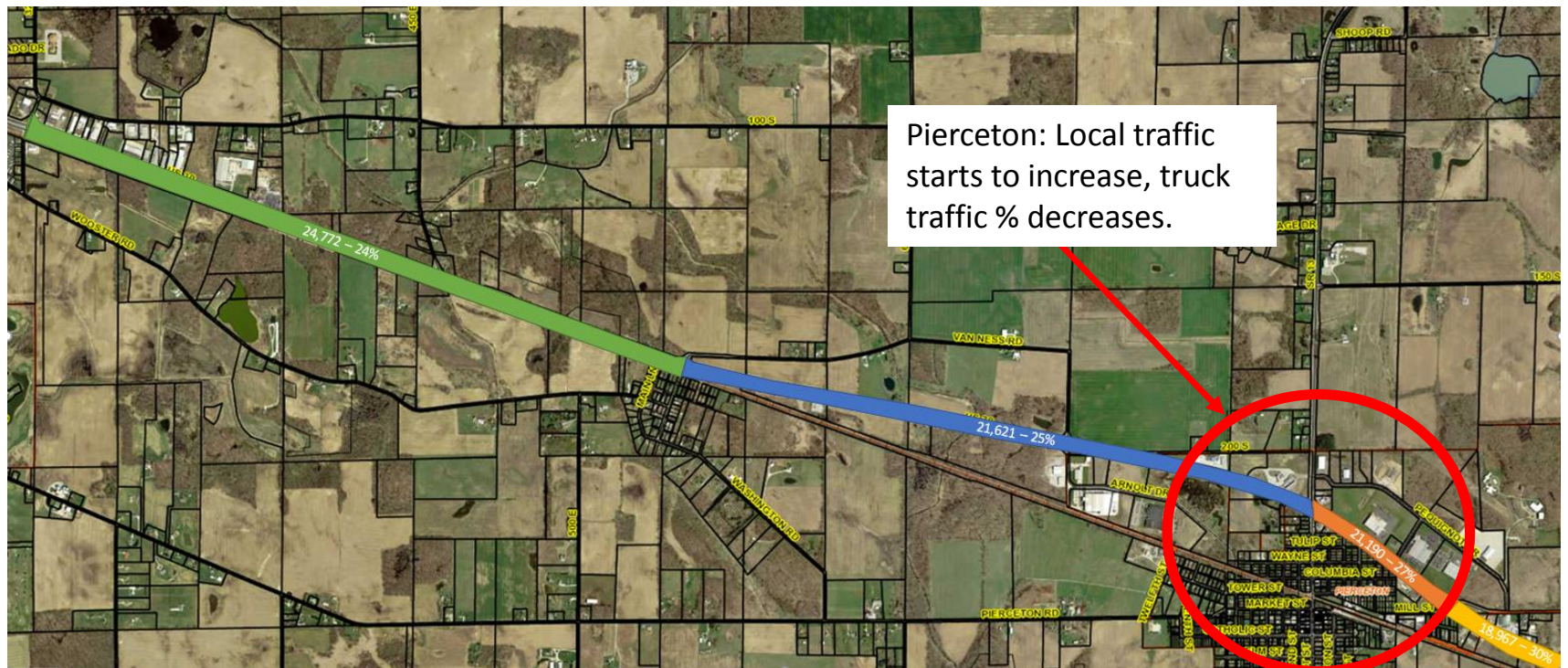


TRAFFIC STATS

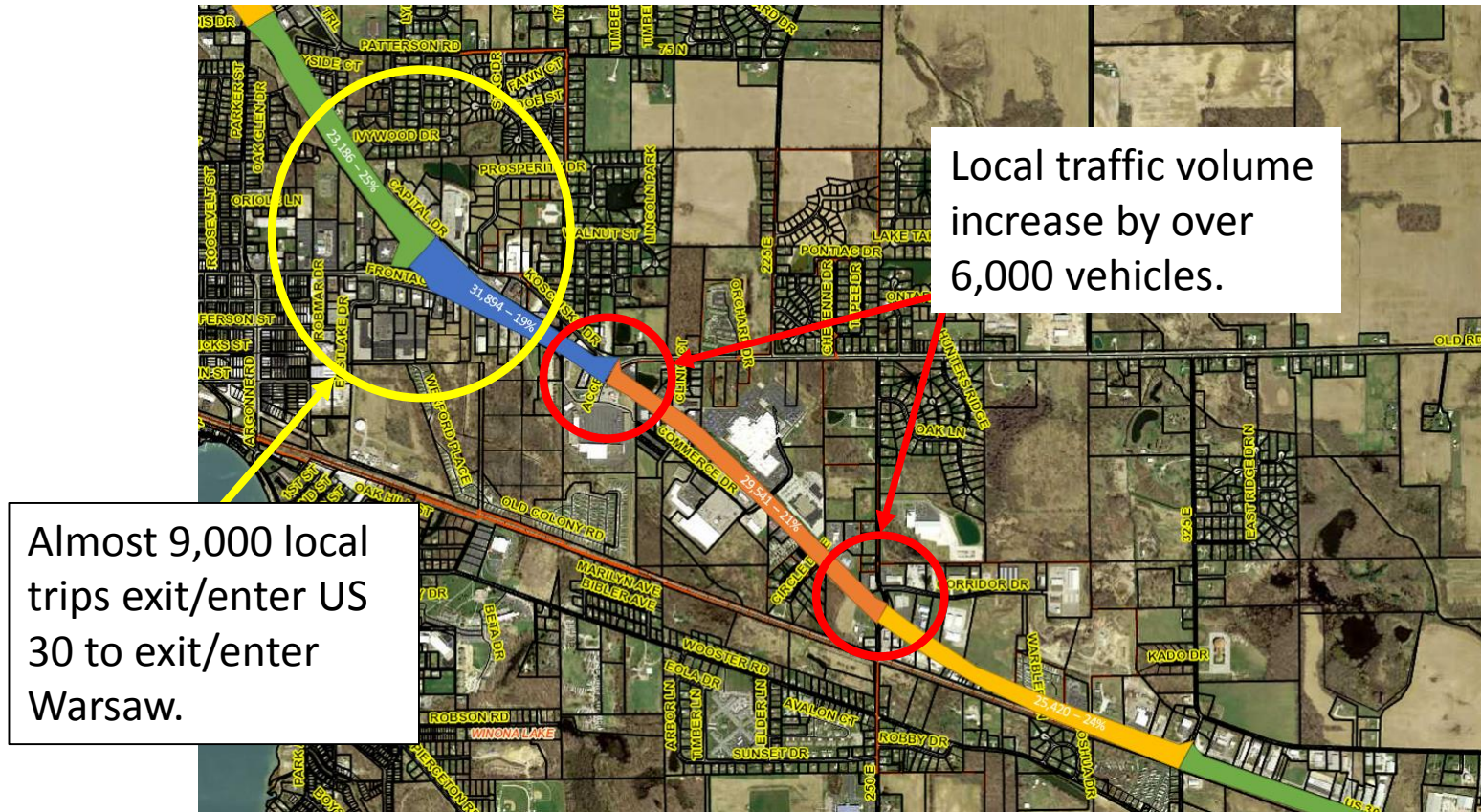


Approx.
26%
of Traffic is
Truck Traffic

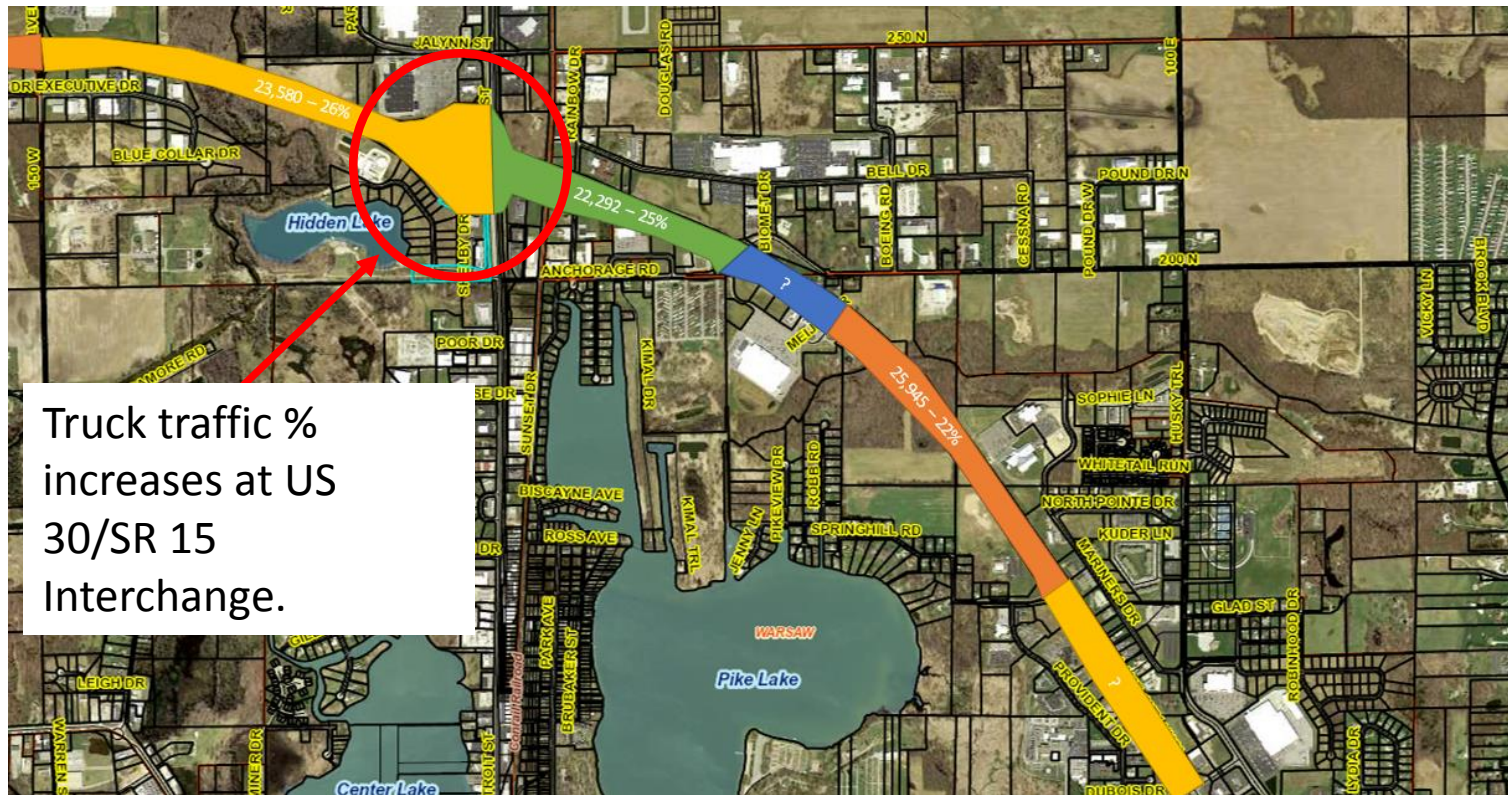
Traffic Patterns & Users



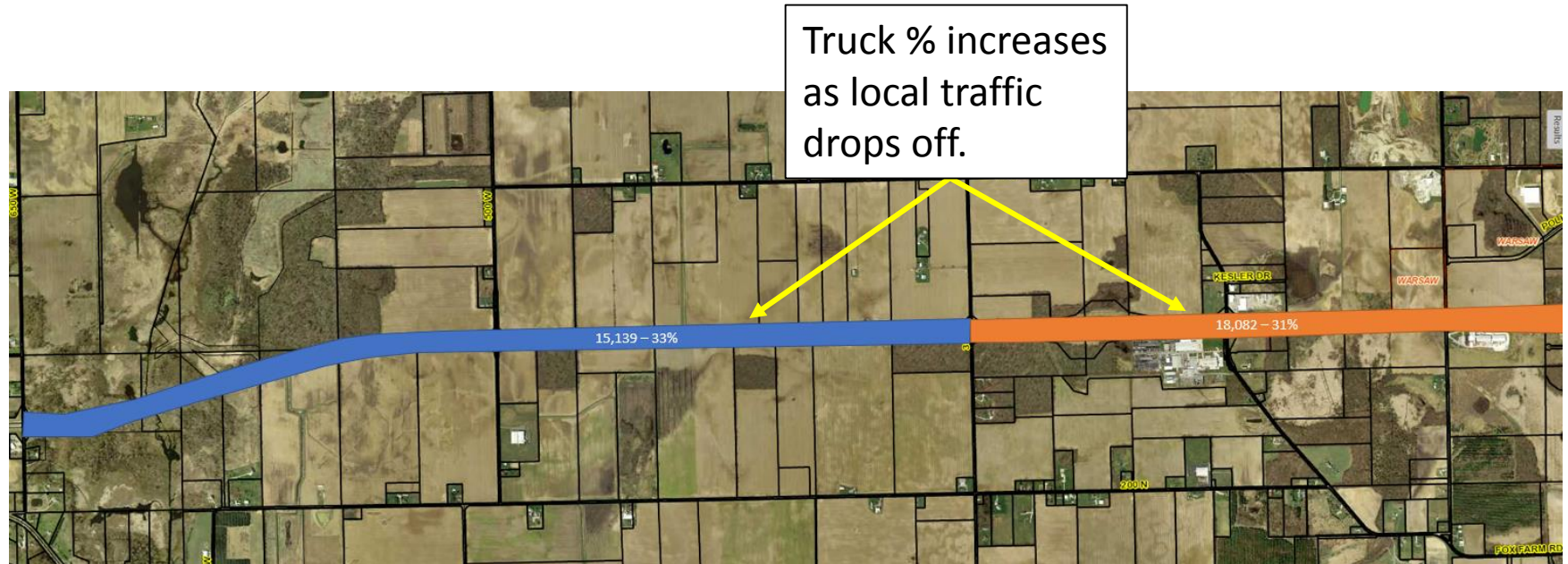
Traffic Patterns & Users



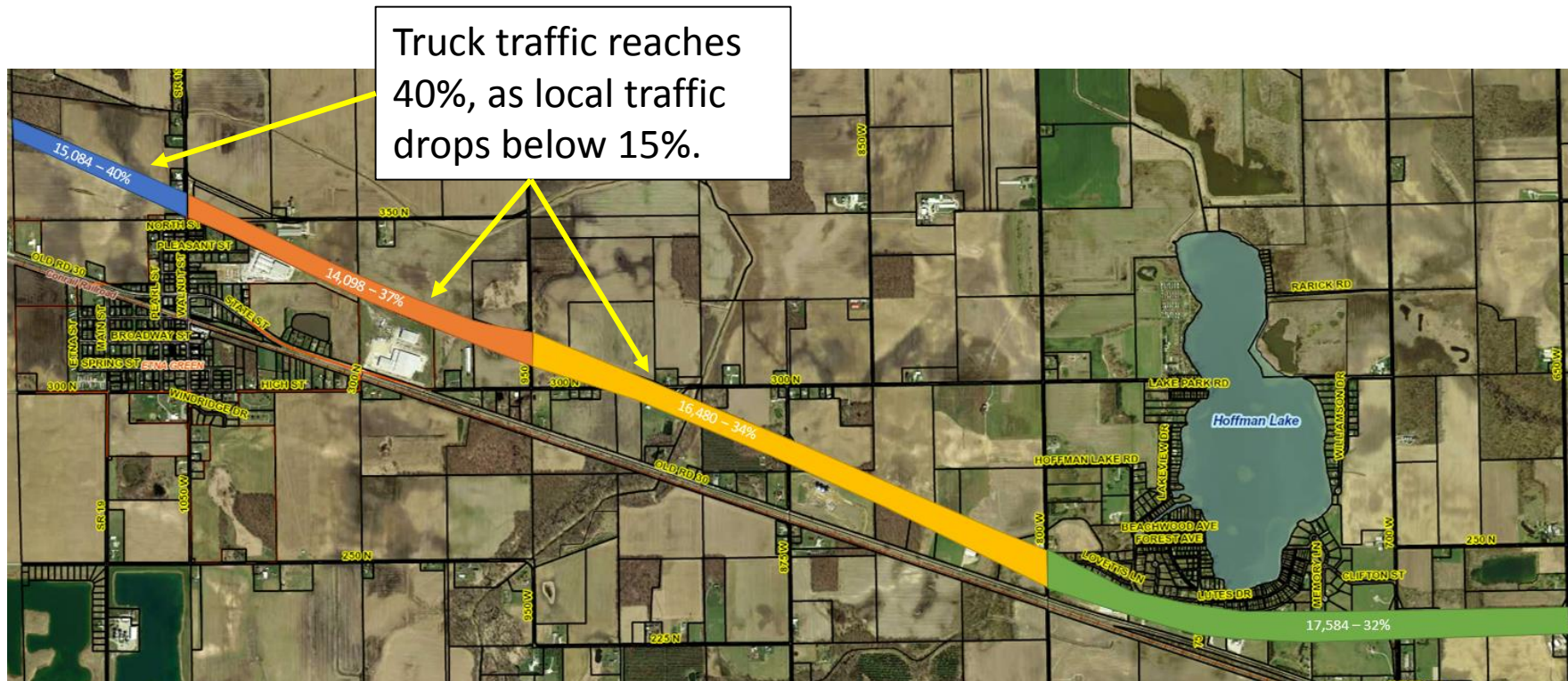
Traffic Patterns & Users



Traffic Patterns & Users



Traffic Patterns & Users



Warsaw Traffic Patterns

- The study focuses on 7 filter zones, which happen to correlate with traffic counting stations along U.S. 30. These stations allow us to understand what the traffic is doing at that point along the U.S. 30 corridor. The stations are described and numbered (for purposes of the attached graphs) below:
- Station 20024, West of Fox Farm Road
- Station 20030, West of S.R. 15
- Station 20040, East of S.R. 15 Interchange
- Station 20041, East of Anchorage Road
- Station 20042, East of Parker Street
- Station 20043, East of Center Street
- Station 20044, East of CR 250 South

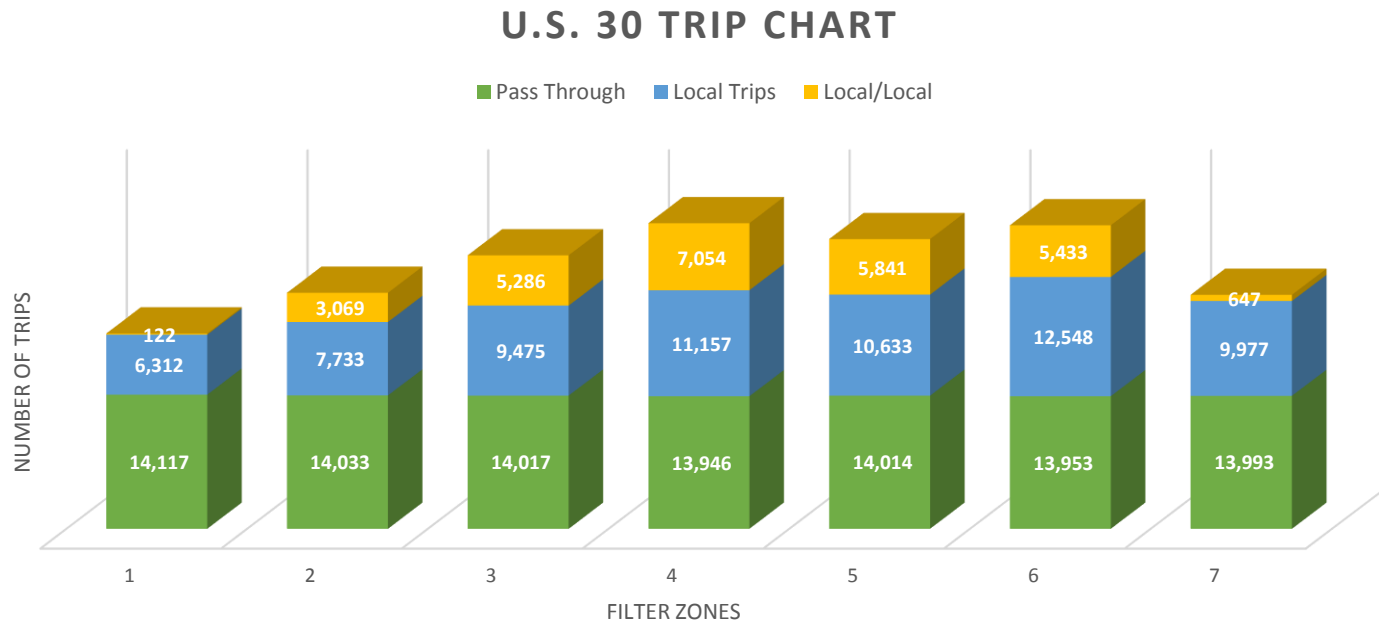
Traffic Flow by Filter Zone (Warsaw)

Filter Zones	Total Trips	Commercial	Personal	Commercial %	Personal %
1	20,429	6,708	13,721	33%	67%
2	21,767	6,833	14,884	31%	68%
3	23,493	6,825	16,668	29%	71%
4	25,104	6,867	18,237	27%	73%
5	24,647	6,791	17,856	28%	72%
6	26,501	6,935	19,565	26%	74%
7	23,970	6,883	17,087	29%	71%
Average	23,702	6,835	16,860	29%	71%

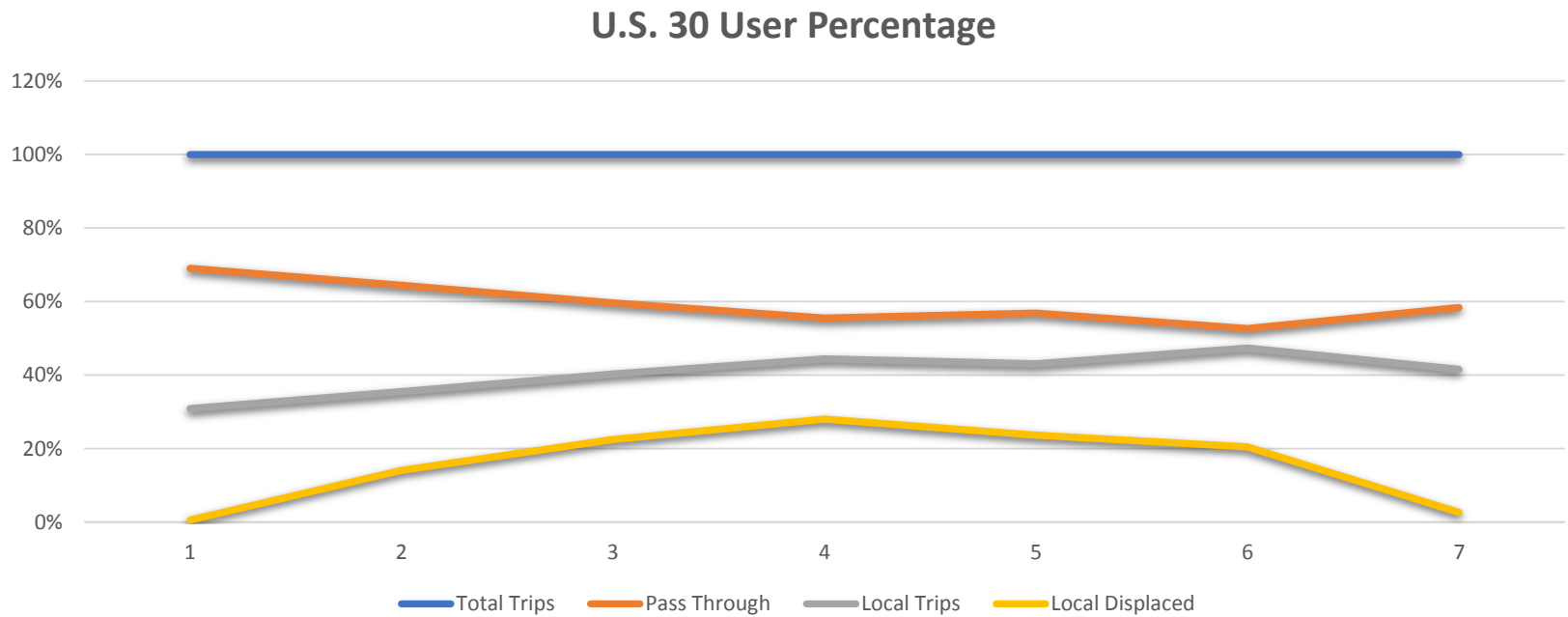
Type of User (Warsaw)

Filter Zones		Pass Through Trips				
	Total Trips	Commercial	Personal	Total PT	Local Trips	Local/Local
1	100%	28%	41%	69%	31%	1%
2	100%	27%	38%	64%	36%	14%
3	100%	25%	35%	60%	40%	23%
4	100%	23%	33%	56%	44%	28%
5	100%	23%	33%	57%	43%	24%
6	100%	22%	31%	53%	47%	21%
7	100%	24%	34%	58%	42%	3%

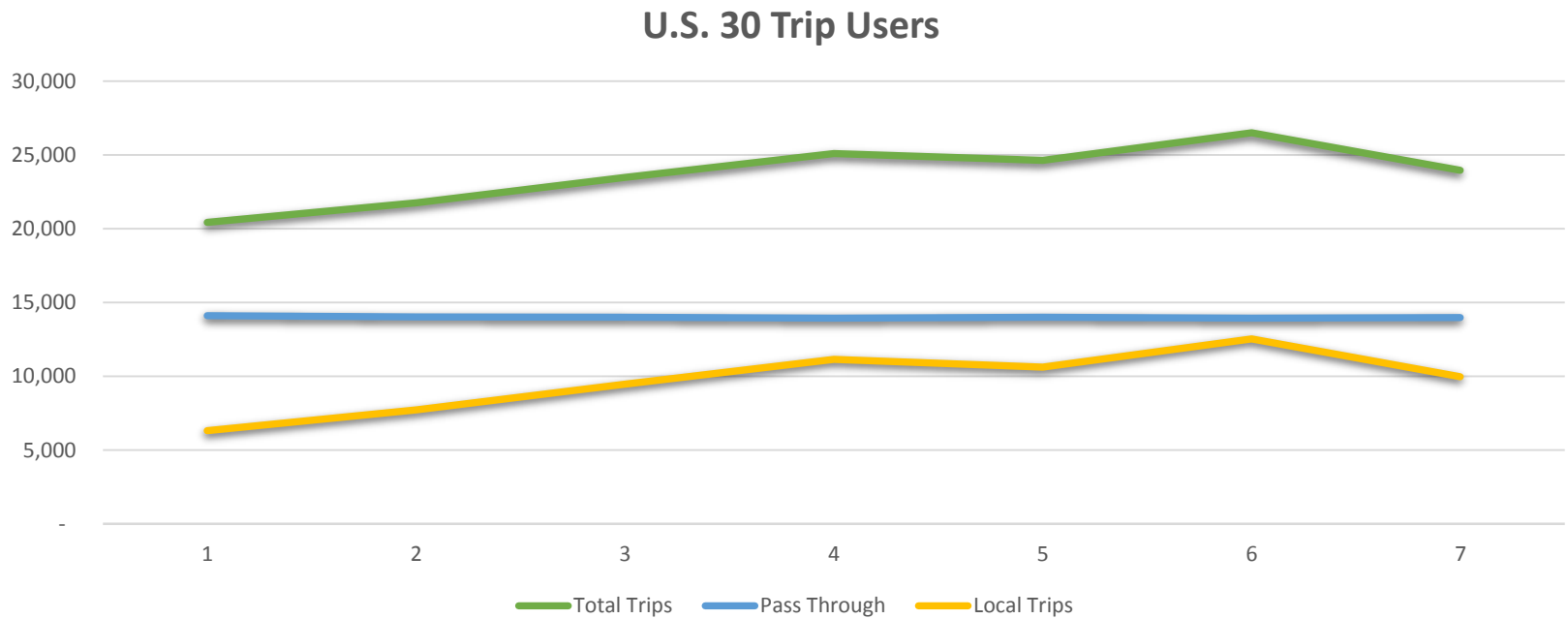
Trip Chart (Warsaw)



User Percentage (Warsaw)



Trip Graph (Warsaw)



SAFETY

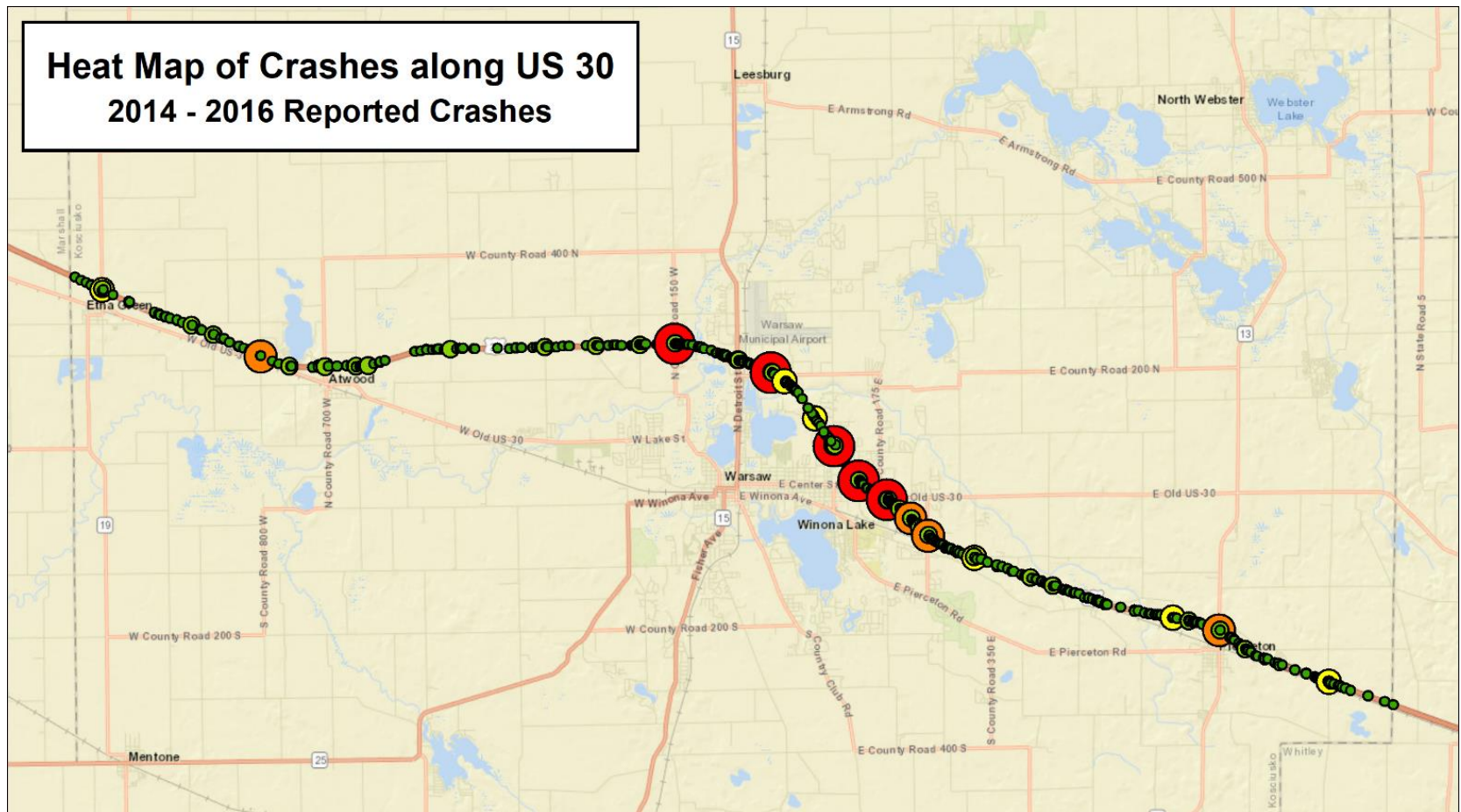


SAFETY

Crashes on US 30 in Kosciusko County

	Total Crashes	Total Injuries	Total Fatalities
2014	237	65	2
2015	258	74	3
2016	312	78	6
Total	807	217	11

SAFETY



SAFETY

Crashes on US 30 at key intersections in Kosciusko County

	Number of Crashes	Total Injuries	Total Fatalities
US 30 and Center Street	94	24	0
US 30 and Old US 30	92	28	0
US 30 and Parker Street	75	23	0
US 30 and Orthopedic Dr	68	28	0
US 30 and N 250 E	66	20	0
Total	395	123	0

Intersection of US 30 and Center Street

2014 - 2016 Reported Crashes along US 30

23200 AADT
25.1% Trucks

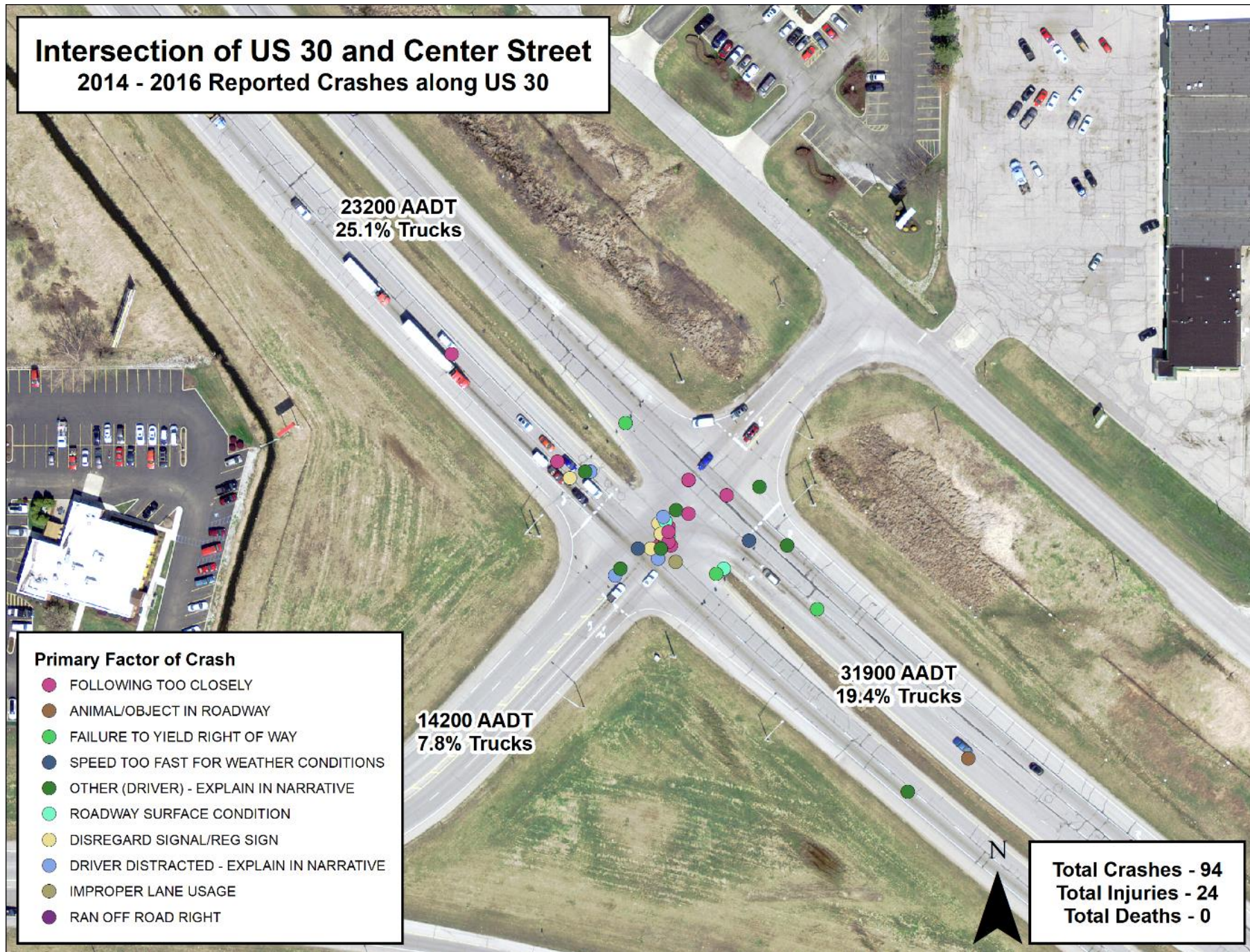
14200 AADT
7.8% Trucks

31900 AADT
19.4% Trucks

Primary Factor of Crash

- FOLLOWING TOO CLOSELY
- ANIMAL/OBJECT IN ROADWAY
- FAILURE TO YIELD RIGHT OF WAY
- SPEED TOO FAST FOR WEATHER CONDITIONS
- OTHER (DRIVER) - EXPLAIN IN NARRATIVE
- ROADWAY SURFACE CONDITION
- DISREGARD SIGNAL/REG SIGN
- DRIVER DISTRACTED - EXPLAIN IN NARRATIVE
- IMPROPER LANE USAGE
- RAN OFF ROAD RIGHT

Total Crashes - 94
Total Injuries - 24
Total Deaths - 0



SAFETY

Crashes on US 30 at key intersections in Kosciusko County

Represent
49%
of Crashes on
US 30 in
Kosciusko

Represent
57%
of Injuries on
US 30 in
Kosciusko

US 30 PUBLIC MEETING

