

Property of KOSCIUSKO COUNTY

SURVEYORS OFFICE

Address 100 W CENTER ST

COURTHOUSE, WARSAW, IN

Telephone _____

MICHAEL KISSINGER - SURVEYOR

TOPCON GPT-3105W TOTAL STATION

This Book is manufactured of a High Grade 50% Rag Ledger Paper having a Water Resistant Surface, and is sewed with Nylon Water-proof Thread.

815260



SECTION CORNER FIELD BOOK 7

INDEX

STARTED MAY 10, 2017

| | | |
|--|---------|----|
| JACKSON N ¹ / ₄ CORNER SECTION | 25-31-7 | 1 |
| JACKSON E ¹ / ₄ CORNER SECTION | 4-30-7 | 2 |
| JACKSON NE CORNER SECTION | 33-31-7 | 3 |
| JACKSON W ¹ / ₄ CORNER SECTION | 27-31-7 | 4 |
| MONROE W ¹ / ₄ CORNER SECTION | 15-31-7 | 5 |
| PRAIRIE N ¹ / ₄ CORNER SECTION | 6-33-5 | 6 |
| PRAIRIE COS SECTION | 6-33-5 | 7 |
| MONROE SE CORNER SECTION | 3-31-7 | 8 |
| FRANKLIN SW CORNER SECTION | 18-31-5 | 9 |
| FRANKLIN SW CORNER SECTION | 5-31-5 | 10 |
| VAN BUREN E ¹ / ₄ CORNER SECTION | 29-34-6 | 11 |
| SEWARD COS SECTION | 12-30-5 | 12 |
| SEWARD S ¹ / ₄ CORNER SECTION | 12-30-5 | 13 |
| WAYNE N ¹ / ₄ CORNER SECTION | 11-32-6 | 14 |
| SCOTT NE CORNER SECTION | 27-34-4 | 15 |
| SCOTT N ¹ / ₄ CORNER SECTION | 27-34-4 | 16 |
| TIPPECANOE SE CORNER SECTION | 22-33-7 | 17 |
| PLAIN S ¹ / ₄ CORNER SECTION | 27-33-6 | 18 |
| PRAIRIE N ¹ / ₄ CORNER SECTION | 7-33-5 | 19 |
| PRAIRIE COS SECTION | 7-33-5 | 20 |
| PRAIRIE E ¹ / ₄ CORNER SECTION | 7-33-5 | 21 |

| | | |
|--|---------|----|
| WASHINGTON CENTER OF SECTION | 7-32-7 | 22 |
| PLAIN CENTER OF SECTION | 27-33-6 | 23 |
| JEFFERSON W ¹ / ₄ CORNER SECTION | 6-34-5 | 24 |
| JEFFERSON NW CORNER SECTION | 6-34-5 | 25 |
| JEFFERSON N ¹ / ₄ CORNER SECTION | 6-34-5 | 26 |
| JEFFERSON NE CORNER SECTION | 6-34-5 | 27 |
| SEWARD W ¹ / ₄ CORNER SECTION | 11-30-5 | 28 |
| SEWARD E ¹ / ₄ CORNER SECTION | 15-30-5 | 29 |
| SEWARD SE CORNER SECTION | 15-30-5 | 30 |
| HARRISON W ¹ / ₄ CORNER SECTION | 23-32-5 | 31 |
| PLAIN NE CORNER SECTION | 31-33-6 | 32 |
| MONROE NE CORNER SECTION | 20-31-7 | 33 |
| HARRISON S ¹ / ₄ CORNER SECTION | 14-32-4 | 34 |
| HARRISON COS SECTION | 10-32-4 | 35 |
| JACKSON NE CORNER SECTION | 32-31-7 | 36 |
| HARRISON NE CORNER SECTION | 10-32-4 | 37 |
| PRAIRIE NW CORNER SECTION | 36-33-5 | 38 |
| PRAIRIE N ¹ / ₄ CORNER SECTION | 36-33-5 | 39 |
| WAYNE E ¹ / ₄ CORNER SECTION | 32-32-6 | 40 |
| WASHINGTON SW CORNER SECTION | 27-32-7 | 41 |
| JACKSON S ¹ / ₄ CORNER SECTION | 1-30-7 | 42 |
| JACKSON W ¹ / ₄ CORNER SECTION | 28-31-7 | 44 |
| JACKSON CENTER OF SECTION | 28-31-7 | 45 |
| WAYNE N ¹ / ₄ CORNER SECTION | 4-32-6 | 46 |
| JACKSON SE CORNER SECTION | 34-31-7 | 47 |

| | | |
|------------|--|----|
| ETNA | SE CORNER SECTION 26-33-4 | 48 |
| WASHINGTON | NW CORNER SECTION 27-32-7 | 49 |
| WASHINGTON | N $\frac{1}{4}$ CORNER SECTION 27-32-7 | 50 |
| HARRISON | S $\frac{1}{4}$ CORNER SECTION 15-32-4 | 51 |
| WASHINGTON | CENTER OF SECTION 27-32-7 | 52 |
| JACKSON | W $\frac{1}{4}$ CORNER SECTION 1-30-7 | 53 |
| HARRISON | N $\frac{1}{4}$ CORNER SECTION 27-32-4 | 54 |
| ETNA | NW CORNER SECTION 27-33-4 | 55 |
| ETNA | E $\frac{1}{4}$ CORNER SECTION 27-33-4 | 56 |
| JACKSON | N $\frac{1}{4}$ CORNER SECTION 32-31-7 | 57 |
| HARRISON | NE CORNER SECTION 22-32-4 | 58 |
| HARRISON | SE CORNER SECTION 22-32-4 | 59 |
| HARRISON | CENTER OF SECTION 27-32-4 | 60 |
| JEFFERSON | CENTER OF SECTION 6-34-5 | 61 |
| JEFFERSON | E $\frac{1}{4}$ CORNER SECTION 6-34-5 | 62 |
| JEFFERSON | S $\frac{1}{4}$ CORNER SECTION 6-34-5 | 63 |
| WAYNE | NE CORNER SECTION 36-32-5 | 64 |
| FRANKLIN | W $\frac{1}{4}$ CORNER SECTION 6-30-5 | 65 |
| FRANKLIN | S $\frac{1}{4}$ CORNER SECTION 36-31-4 | 66 |
| FRANKLIN | SW CORNER SECTION 31-31-5 | 67 |
| WASHINGTON | CENTER OF SECTION 18-32-7 | 68 |
| WASHINGTON | S $\frac{1}{4}$ CORNER SECTION 18-32-7 | 69 |
| WAYNE | NE CORNER SECTION 24-32-6 | 70 |
| PLAIN | CENTER OF SECTION 23-33-6 | 71 |

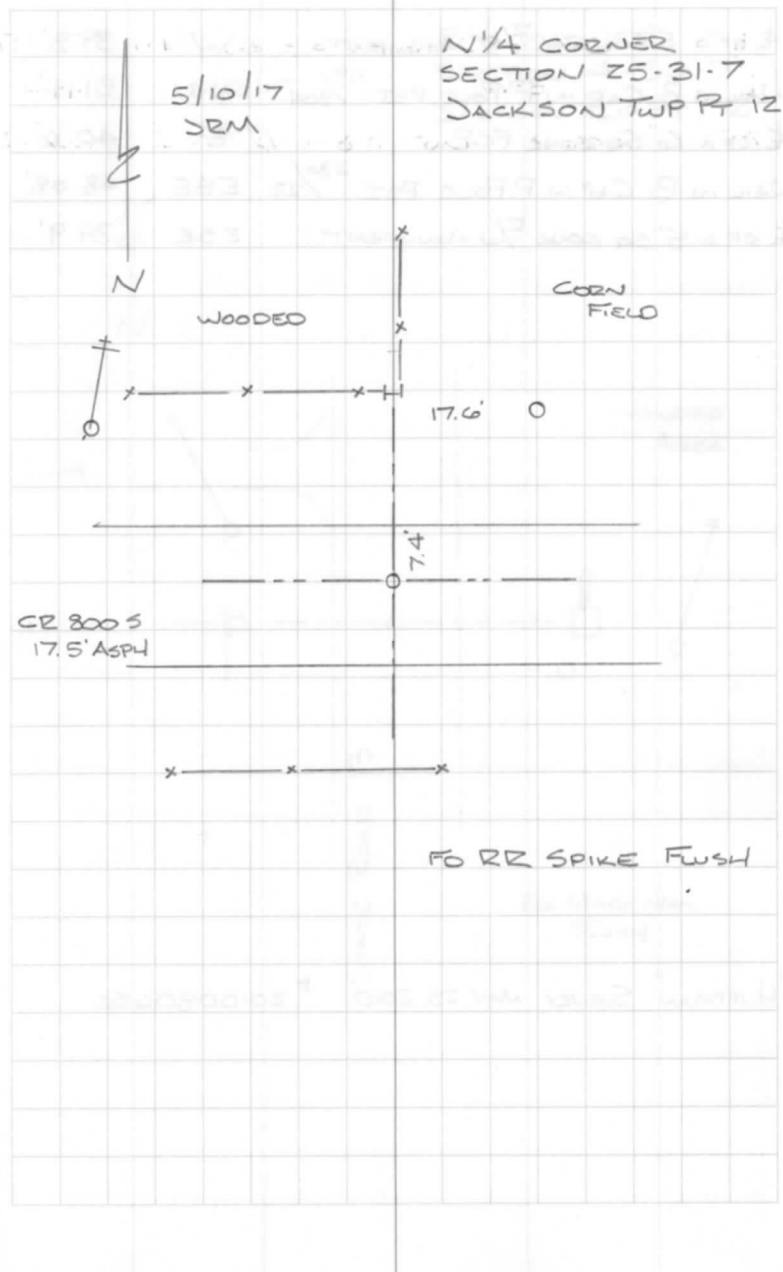
| | | |
|------------|--|----|
| PLAIN | N $\frac{1}{4}$ CORNER SECTION 23-33-6 | 72 |
| WASHINGTON | NW CORNER SECTION 4-32-7 | 73 |
| PLAIN | E $\frac{1}{4}$ CORNER SECTION 35-33-6 | 74 |
| HARRISON | W $\frac{1}{4}$ CORNER SECTION 14-32-5 | 75 |
| HARRISON | CENTER OF SECTION 15-32-4 | 76 |
| TIPPECANOE | W $\frac{1}{4}$ CORNER SECTION 19-33-7 | 77 |
| TIPPECANOE | CENTER OF SECTION 19-33-7 | 78 |

DESCRIPTION

BEARING DISTANCE

| | | |
|--|----|--------|
| NAIL IN B CAP PSI POWER POLE $\frac{111}{520}$ | NW | 93.45' |
| RR RAIL FCP | N | 20.9' |
| $\frac{1}{2}$ " x 18" REBAR W/CAP 11.8' TO E/P | NE | 26.40' |

JACKSON



DESCRIPTION

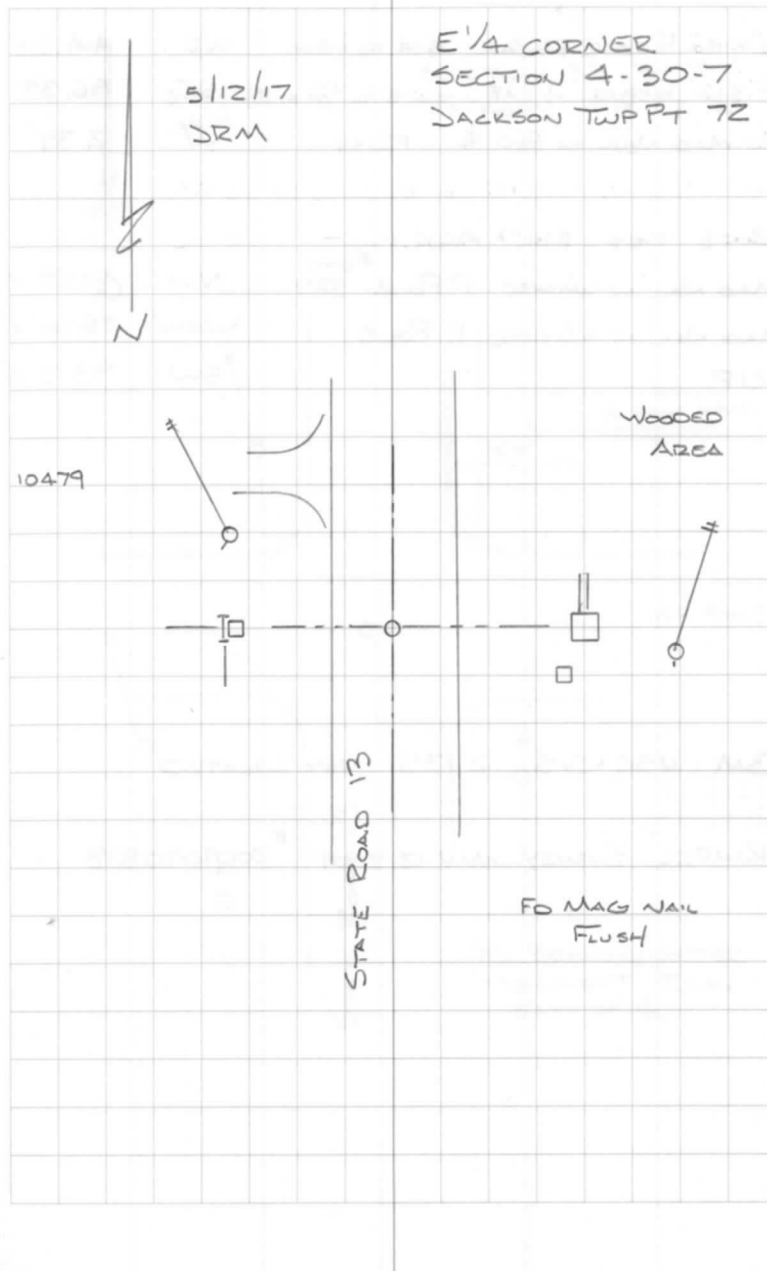
BEARING DISTANCE

| | | |
|---|-----|--------|
| E OF A 5" SQ CONC B/W MONUMENT | W | 39.8' |
| NAIL IN B. CAP IN P. POLE PSI ¹¹⁹ /804 | NW | 51.13' |
| E OF A 6" SQ CONC FCP | E | 40.6' |
| NAIL IN B. CAP IN P. POLE PSI ²³⁰ /22 | ESE | 48.08' |
| E OF A 5" SQ CONC B/W MONUMENT | ESE | 39.9' |

"HUFFMAN" SURVEY MAY 25, 2010 ± 2010080650

JACKSON

2



DESCRIPTION

BEARING DISTANCE

| | | |
|---|----|--------|
| 1/2" x 16" REBAR W/CAP 5.4' TO WALK | NE | 44.30' |
| 1/2" x 16" REBAR W/CAP 26.8' TO E/P ST RD | SE | 56.33' |
| FO MAG NAIL IN PAV & FLUSH | W | 2.39' |

2003 TIES RSK & MEK

| | | |
|--|----|----------|
| MAG NAIL IN WASHER P. POLE ^{#095} 387 | NW | 47.58' ✓ |
|--|----|----------|

| | | |
|----------------------------|-----|----------|
| MAG NAIL IN WASHER P. POLE | WSW | 78.01' ✓ |
|----------------------------|-----|----------|

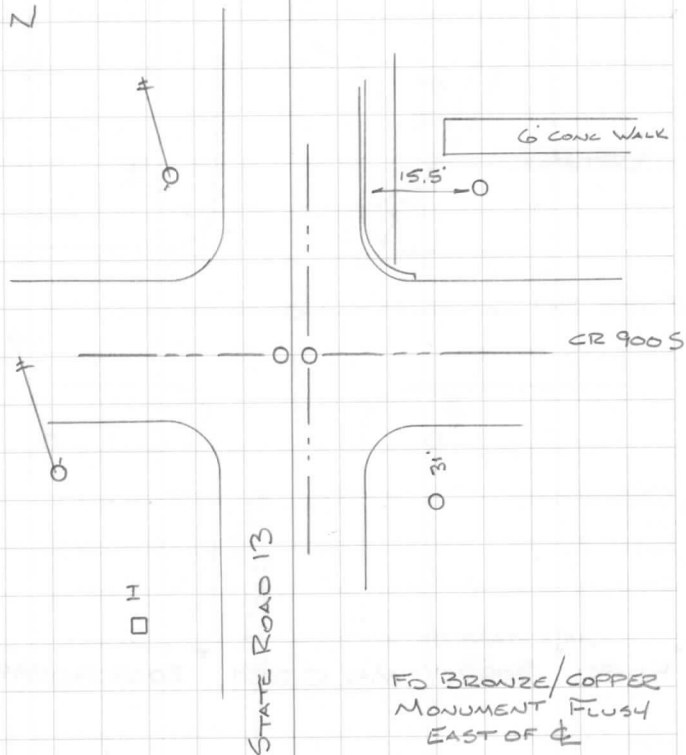
| | | |
|-----|----|---------|
| RIP | SW | 93.3' ✓ |
|-----|----|---------|

BM USC & GS 5135 NOT LOCATED

"KIMPEL" SURVEY MAY 12, 2009 #2009090898

JACKSON

3

5/13/17
DEMNE CORNER
SECTION 33-31-7
JACKSON TWP PT 33

DESCRIPTION

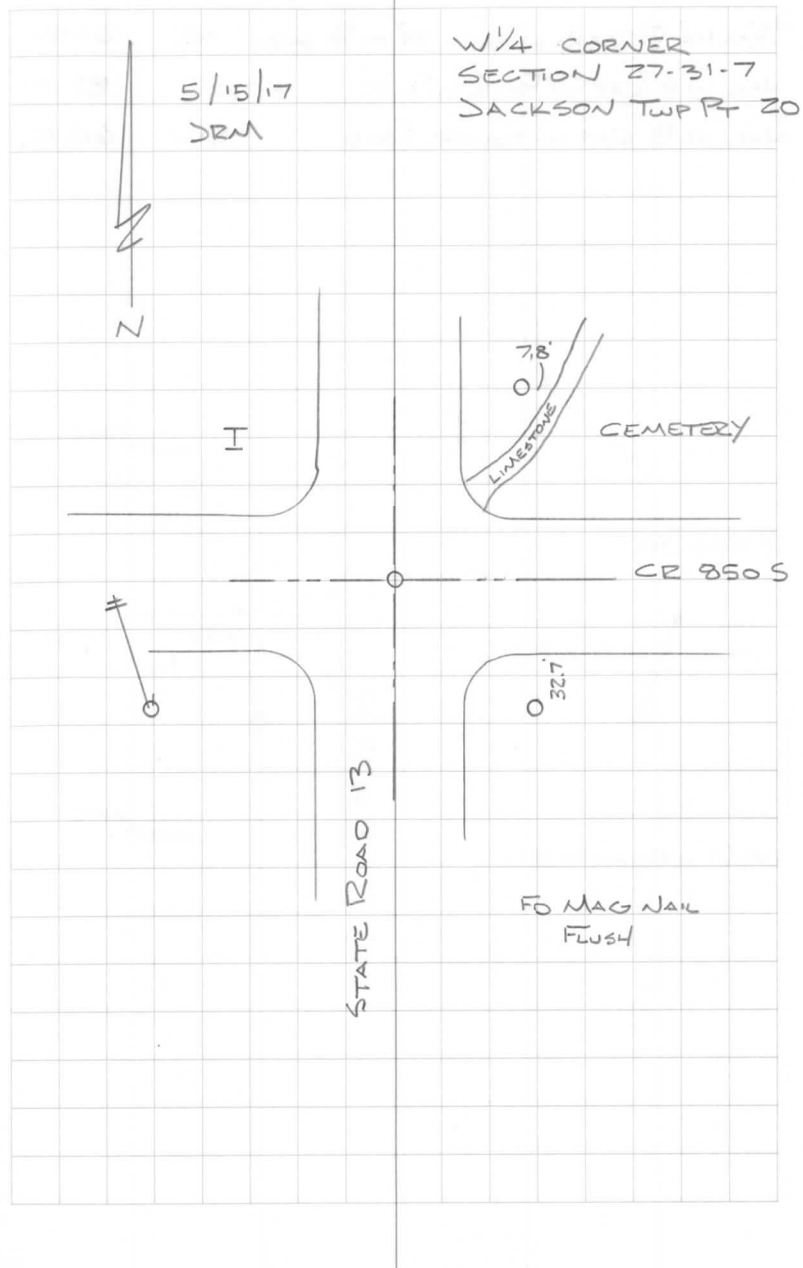
BEARING DISTANCE

| | | |
|--|----|---------|
| 4 RR RAIL FCP | NW | 61.8' |
| 1/2" x 1/6" REBAR W/CAP 22.4' TO E/P STRD NE | | 67.74' |
| 1/2" x 1/6" REBAR W/CAP 29.4' TO E/P STRD SE | | 62.88' |
| NAIL IN B. CAP POWER POLE #95/406 SW | | 100.92' |

"KIMPEL" SURVEY MAY 12, 2009 # Z009090898

JACKSON

4



DESCRIPTION

BEARING DISTANCE

| | | |
|--------------------------------------|----|--------|
| 1/2" x 16" REBAR w/CAP 28 TO E/P STR | NE | 61.00' |
| NAIL IN B. CAP IN POWER POLE | SE | 85.54' |
| NAIL IN B. CAP IN POWER POLE | SW | 60.10' |

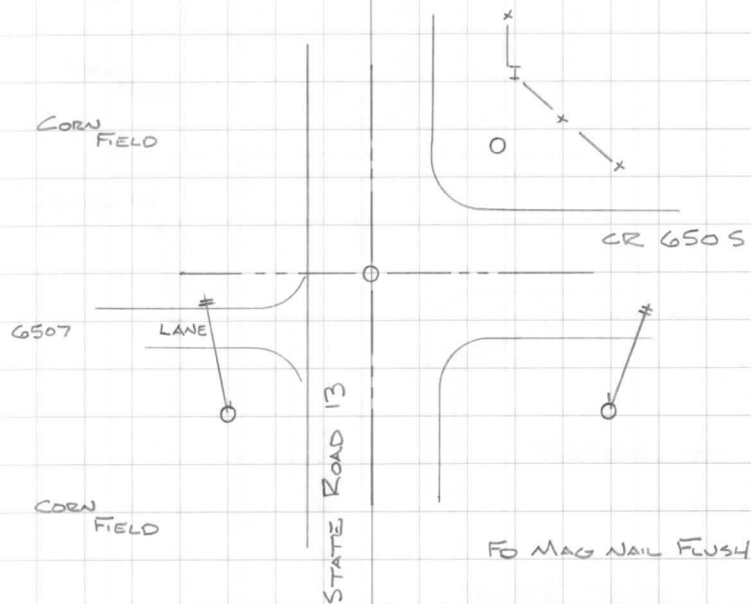
MONROE

5



5/15/17
JEM

W 1/4 CORNER
SECTION 15-31-7
MONROE TWP RT 72

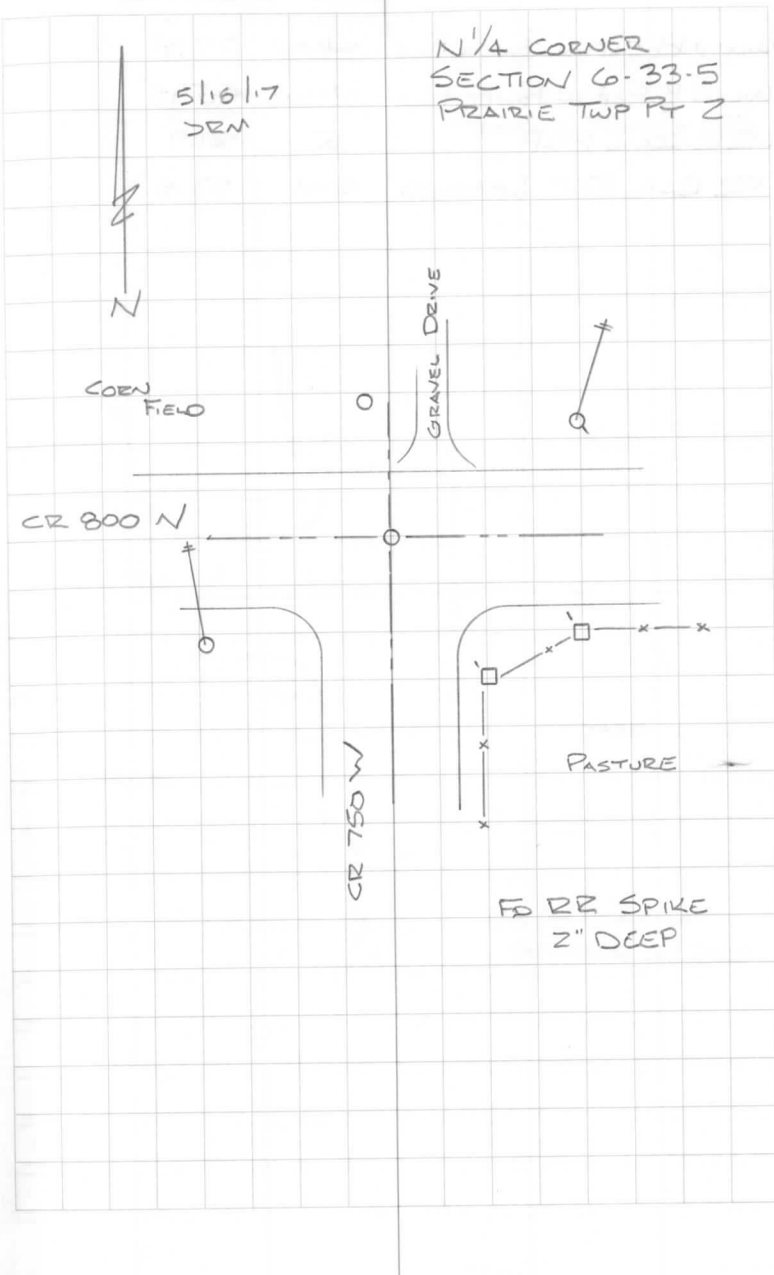


DESCRIPTION

BEARING DISTANCE

| | | |
|---|-----|--------|
| 1/2" x 16" REBAR w/CAP 7.0' FROM DRIVE | N | 22.89' |
| NAIL IN B. CAP IN NIPSCO POLE $\frac{682}{601}$ | ENE | 63.36' |
| NW CORNER 8" x 10" BRIDGE BEAM FCP | ESE | 65.48' |
| NW CORNER 8" x 10" BRIDGE BEAM FCP | SSE | 60.10' |
| NAIL IN B. CAP IN POWER POLE | WSW | 59.49' |

PRAIRIE



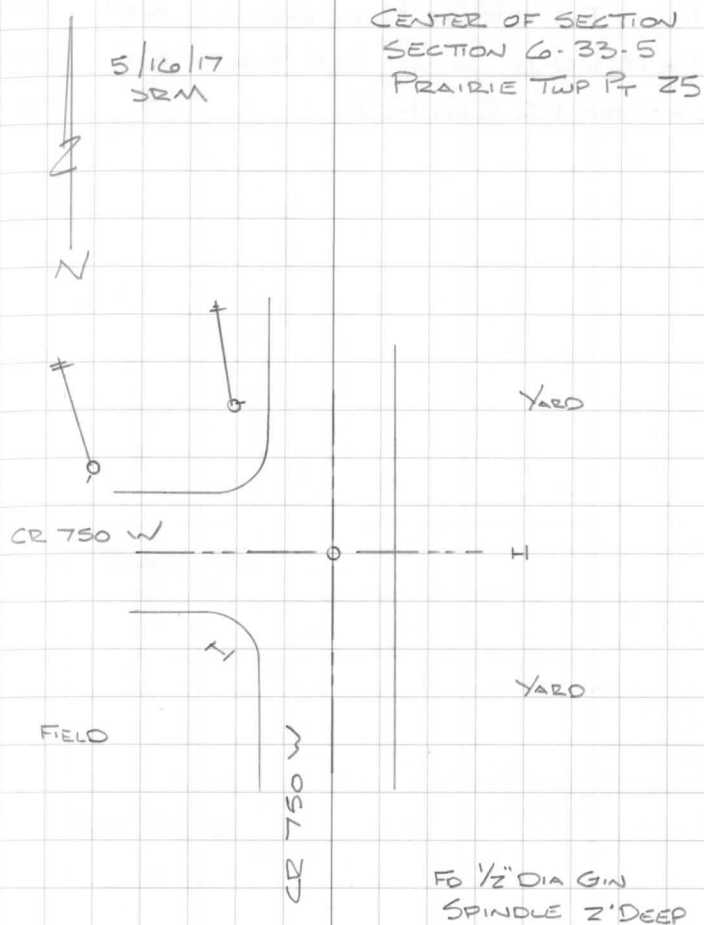
DESCRIPTION

BEARING DISTANCE

| | | | |
|------------|------------------------------|-----|--------|
| 1/2" x 16" | NAIL IN B. CAP IN POWER POLE | WNW | 77.18' |
| NAIL IN | NAIL IN B. CAP IN POWER POLE | NNW | 45.95' |
| NW COR | § RR RAIL FCP | E | 21.9' |
| NW COR | § RR RAIL FCP LEAVING | SW | 33.5' |
| NAIL IN | | | |

PRAIRIE

7



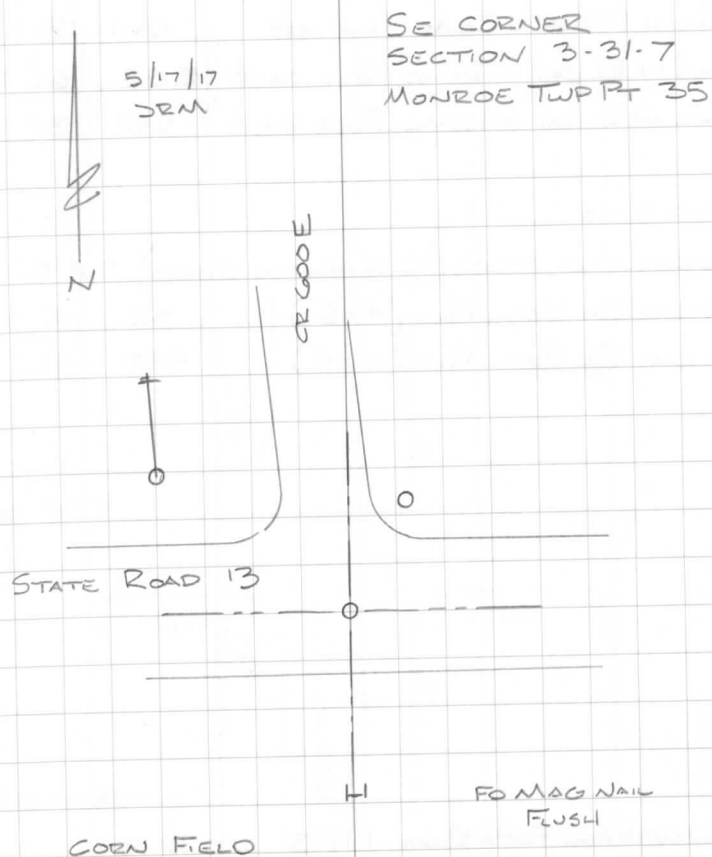
DESCRIPTION

BEARING DISTANCE

| | | |
|---------------------------------------|----|--------|
| NAIL IN TAG IN POWER POLE 6' HIGH | NW | 70.10' |
| 1/2" X 18" REBAR w/CAP 18.5' E/P STRD | NE | 39.46' |
| ⊥ AT TOP RR RAIL FCP | S | 50.14' |

"WALKER" SURVEY 8/28/2012 # 2012081844

MONROE



DESCRIPTION

BEARING DISTANCE

| | | |
|----------------------------------|-----|--------|
| NAIL IN B. CAP IN REMC POLE 1447 | NW | 31.03' |
| NAIL IN B. CAP IN REMC POLE 0458 | ESE | 66.29' |
| NAIL IN B. CAP IN REMC POLE 0459 | SW | 32.71' |

OLD TIES

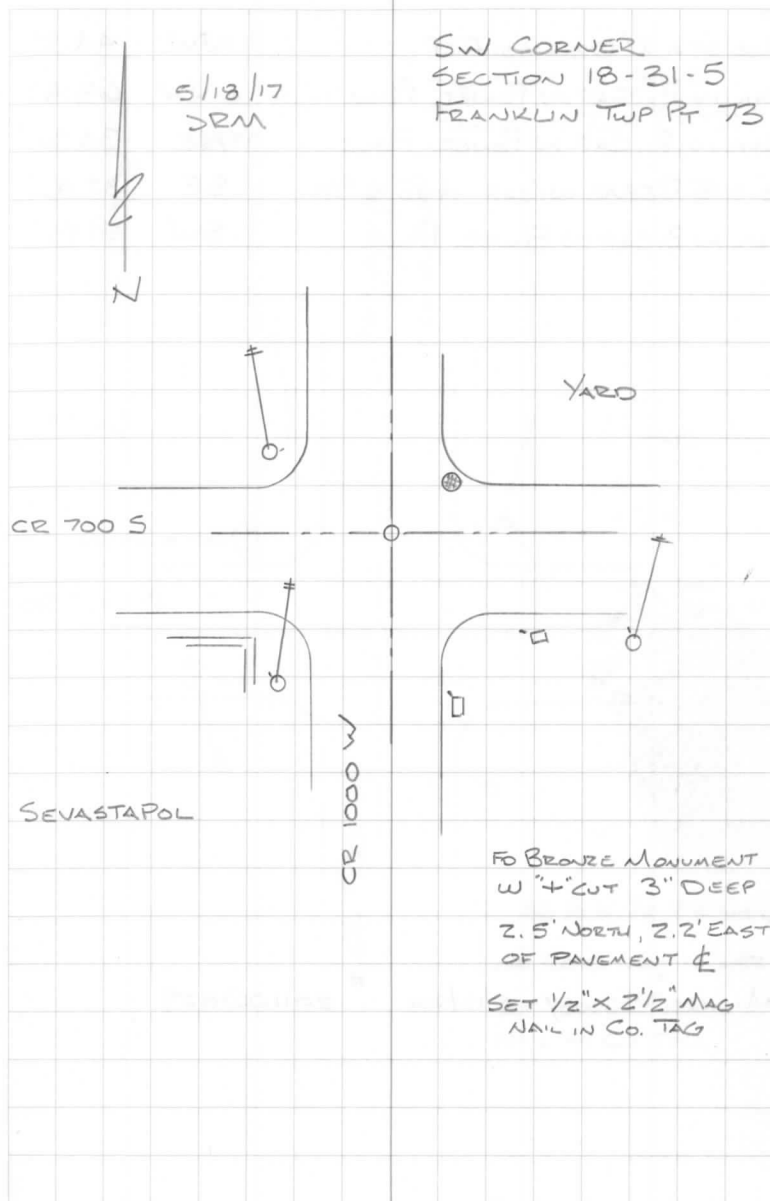
| | | |
|---|-----|---------|
| NE COR OLD STORE (FO FOUNDATION STONES) | SW | 35.1' ✓ |
| NW COR BR BEAM POST (4"x8") | SE | 42.3' ✓ |
| NW COR BR BEAM POST (4"x8") | SSE | 41.5' ✓ |

SEVASTAPOL PLAT BOOK 1 Pg 31 OCT 30, 1856

LEGAL SURVEY BOOK 3 Pg 20 - STONE MARCH 29, 1907

FRANKLIN

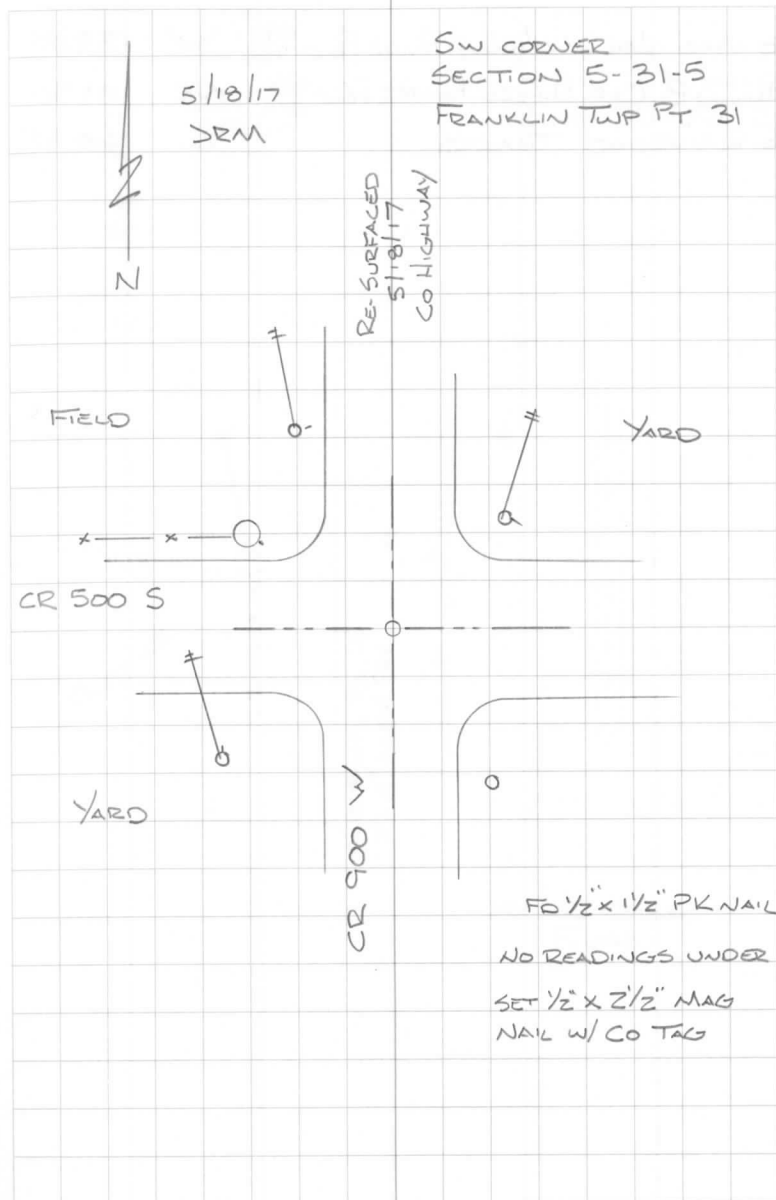
9



| DESCRIPTION | BEARING | DISTANCE |
|------------------------------------|---------|----------|
| FACE OF A 10" DIA CONC FCP | NW | 44.3' |
| NAIL IN B. CAP IN POWER POLE | NNW | 68.49' |
| NAIL IN B. CAP IN POWER POLE | NE | 34.32' |
| 1/2" X 18" REBAR W/CAP 4.6' TO E/P | SE | 32.42' |
| NAIL IN B. CAP IN POWER POLE | SW | 51.55' |

"MICHAEL" SURVEY 5/13/2011 # 2011061029

FRANKLIN



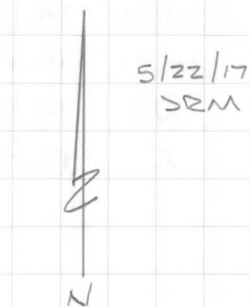
DESCRIPTION

BEARING DISTANCE

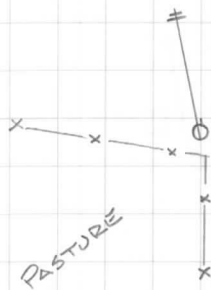
| | | |
|--|----|--------|
| FO MAG NAIL IN NIPSCO POWER POLE $\frac{690}{125}$ | W | 32.05' |
| NAIL IN B. CAP NIPSCO POWER POLE $\frac{636}{614}$ | NE | 41.90' |
| E RAILROAD TRACKS | E | 64.95' |

VAN BUREN

11



E 1/4 CORNER
SECTION 29-34-6
VAN BUREN TWP PT 126



OLD STATE RD 15
23.5' ASPH PAV

FO RR SPIKE
FLUSH

DESCRIPTION

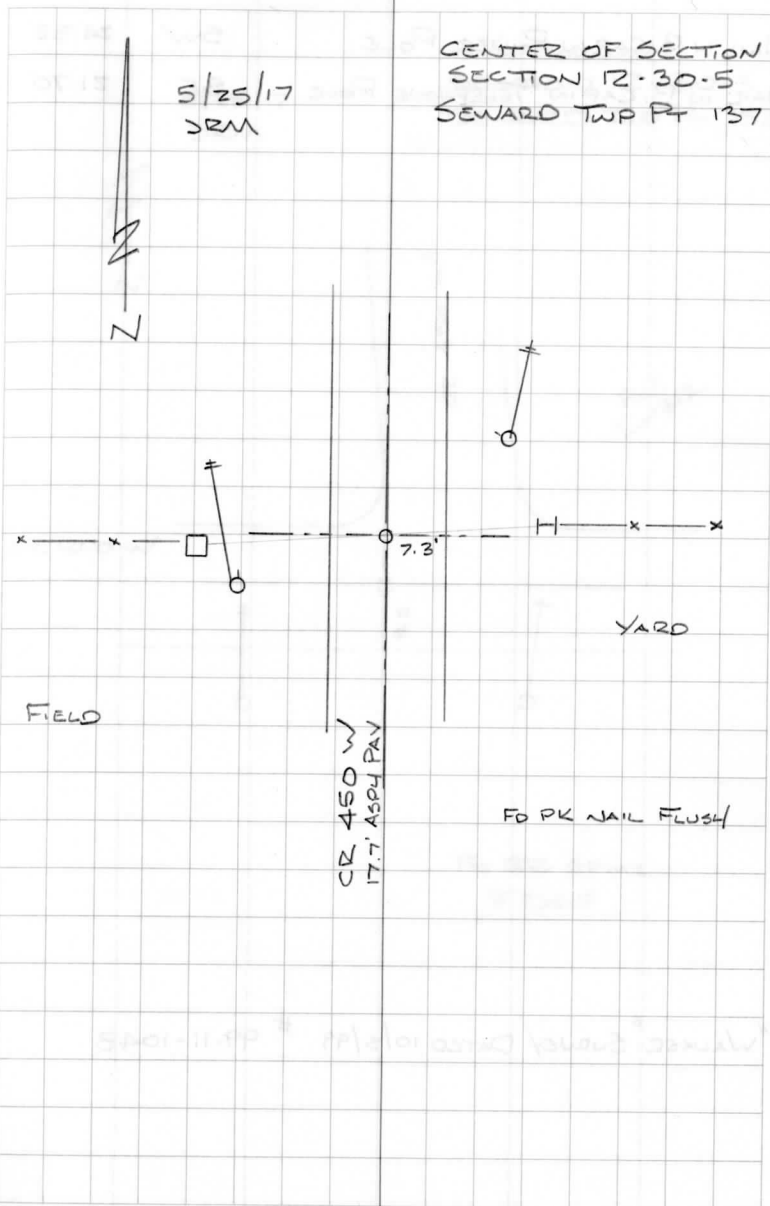
BEARING DISTANCE

| | | |
|------------------------------|-----|--------|
| NAIL IN B. CAP IN POWER POLE | WSW | 14.14' |
| ± 8" SQ CONC FCP AT BASE | W | 15.1' |
| NAIL IN B. CAP IN POWER POLE | NE | 24.88' |
| ± RAILROAD RAIL FCP | E | 15.15' |

"WALKER" SURVEY DATED 4/20/98 # 98-06-1864

SEWARD

12



DESCRIPTION

BEARING DISTANCE

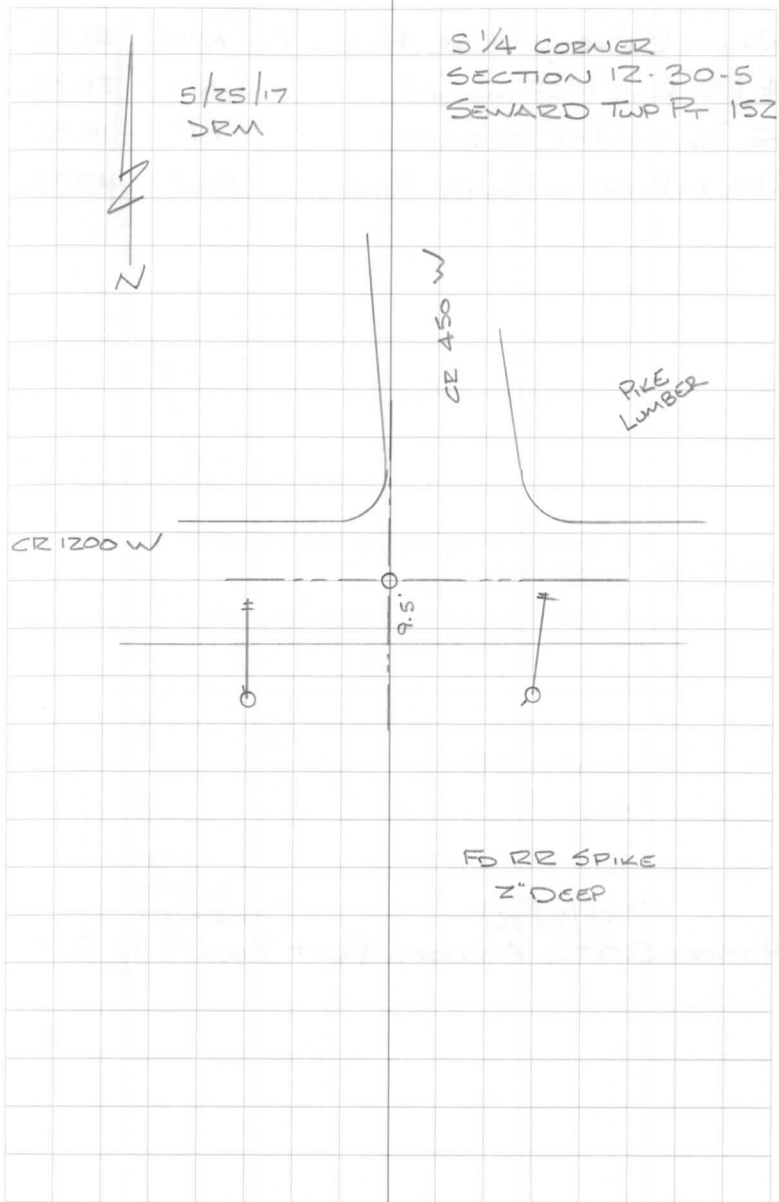
NAIL IN B. CAP IN POWER POLE
 NAIL IN B. CAP IN TELEPHONE POLE

SW 24.32'
 SE 21.70'

"WALKER" SURVEY DATED 10/5/99 # 99.11-1048

SEWARD

13



DESCRIPTION

BEARING DISTANCE

NAIL IN B. CAP IN POWER POLE

NW 51.25'

4 RR RAIL FCP IN CONC

N 25.08'

FO 3/4" IRON PIPE 6" DEEP

N 19.76'

NAIL IN B. CAP IN POWER POLE

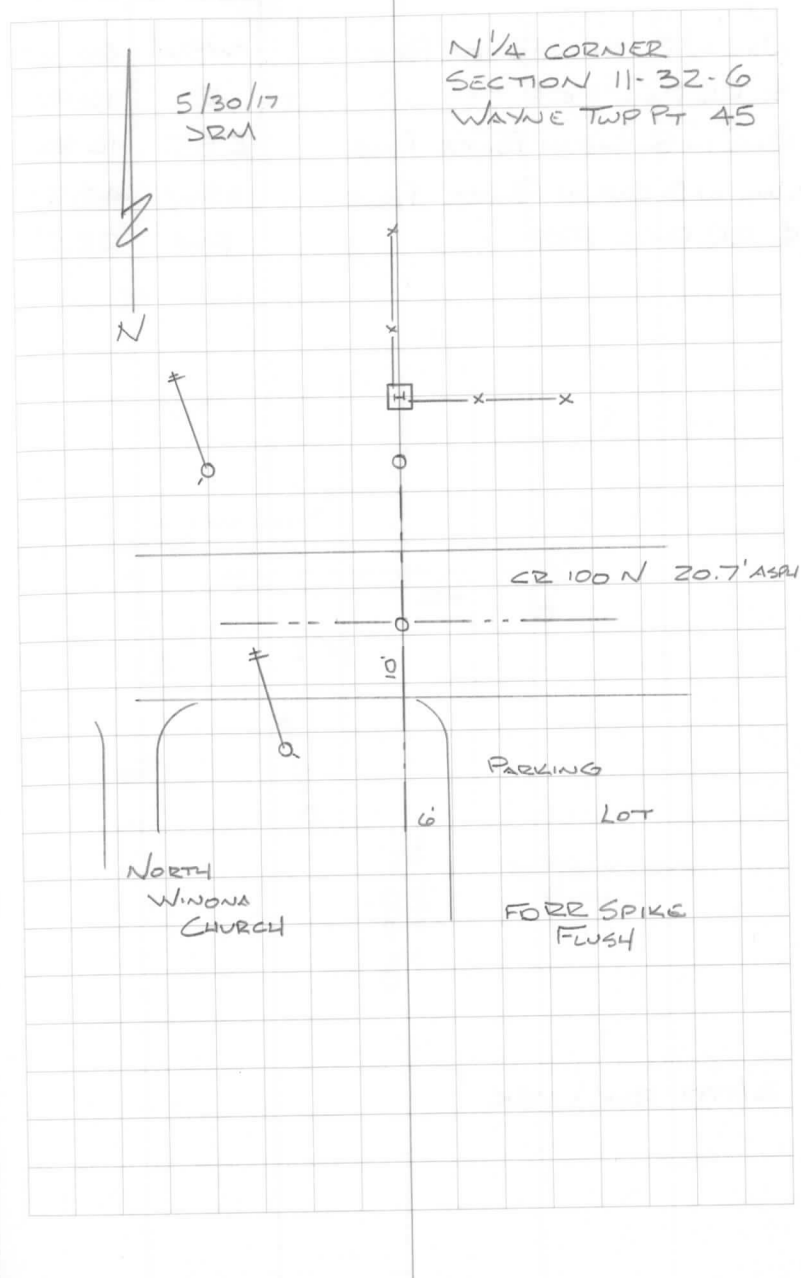
SW 42.32'

12/3/76

HICKORY ESTATES AMENDED PLAT BOOK 9 P 31

WAYNE

14

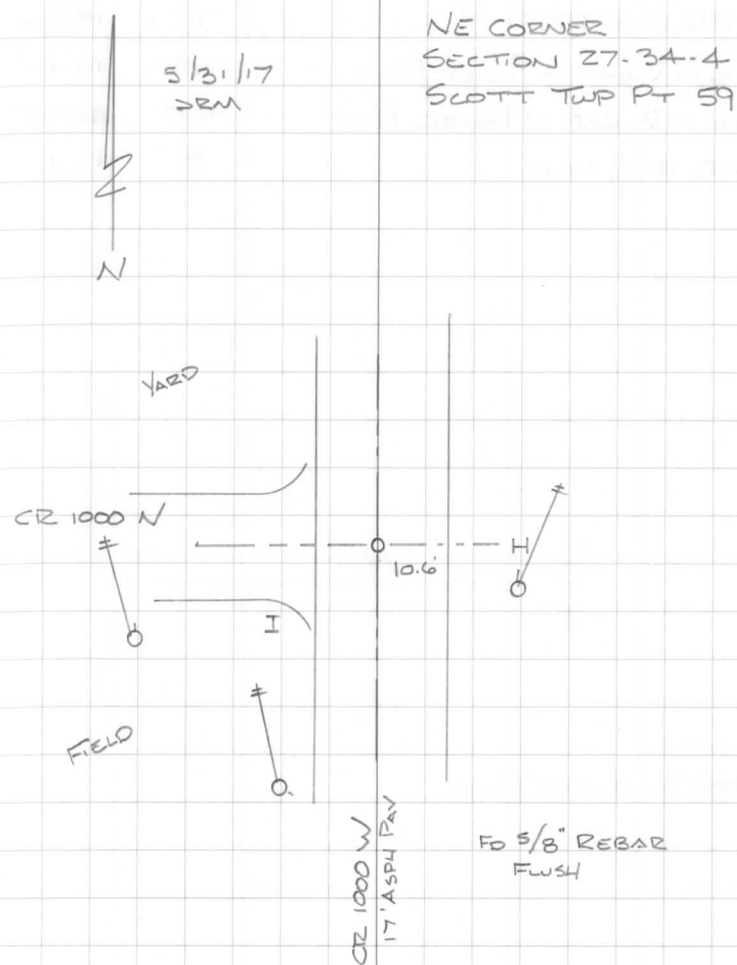


| DESCRIPTION | BEARING | DISTANCE |
|------------------------------|---------|----------|
| NAIL IN B. CAP IN POWER POLE | WSW | 66.40' |
| ⊥ RR RAIL FCP | E | 16.97' |
| NAIL IN B. CAP IN POWER POLE | ESE | 16.86' |
| NAIL IN B. CAP IN POWER POLE | SSW | 40.27' |
| ⊥ RR RAIL FCP | SW | 22.8' |

6/1997 RSK & MEK

SCOTT

15

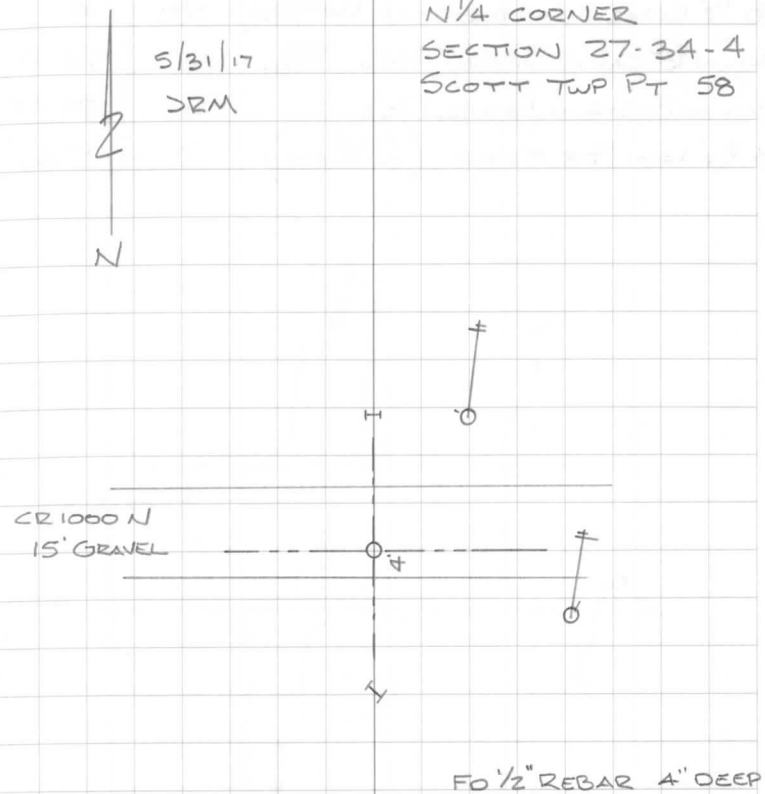


| DESCRIPTION | BEARING | DISTANCE |
|------------------------------|---------|----------|
| E RR RAIL FCP | N | 15.86' |
| NAIL IN B. CAP IN POWER POLE | NE | 16.15' |
| NAIL IN B. CAP IN POWER POLE | SE | 40.33' |
| E RR RAIL FCP | S | 13.1' |

6/1997 RSK & MEK

SCOTT

16



DESCRIPTION

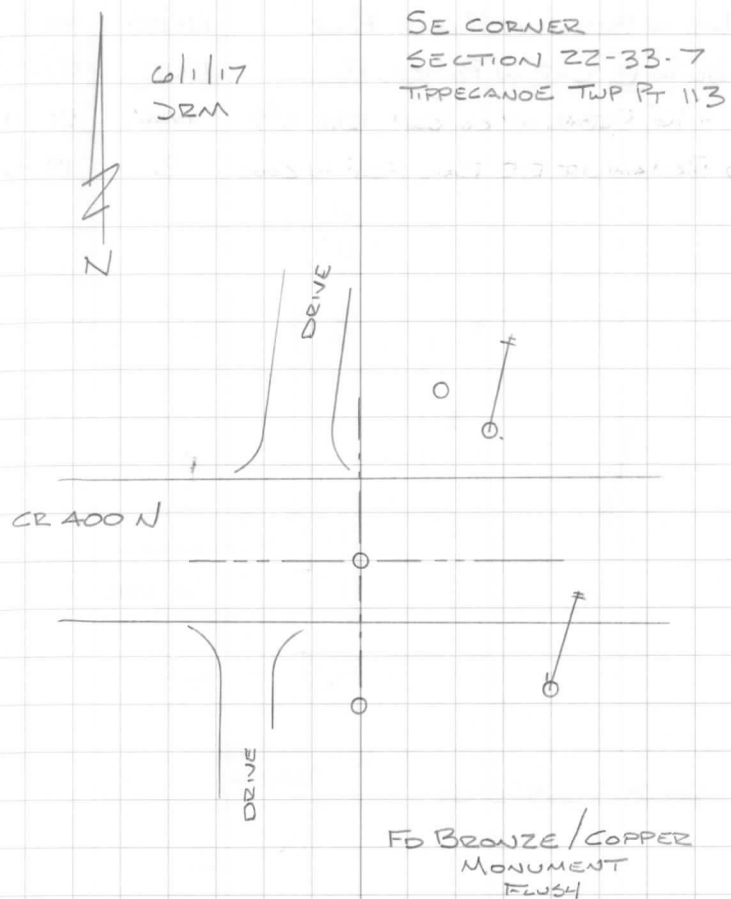
BEARING DISTANCE

| | | |
|--|----|--------|
| FO 1/2" REBAR W/WITNESS CAP (2001 WITNESS) | NE | 40.13' |
| NAIL IN B. CAP IN NIPSCO P. POLE ⁶³⁶ / ₇₈₉ | NE | 39.97' |
| NAIL IN B. CAP IN POWER POLE | SE | 24.40' |
| FO 3/4" IRON PIPE 8" DEEP (1966 WITNESS) | S | 17.65' |

KUHN'S PARK 1ST ADDITION PLAT BOOK 5 Pg 34 1928

TIPPECANOE

17



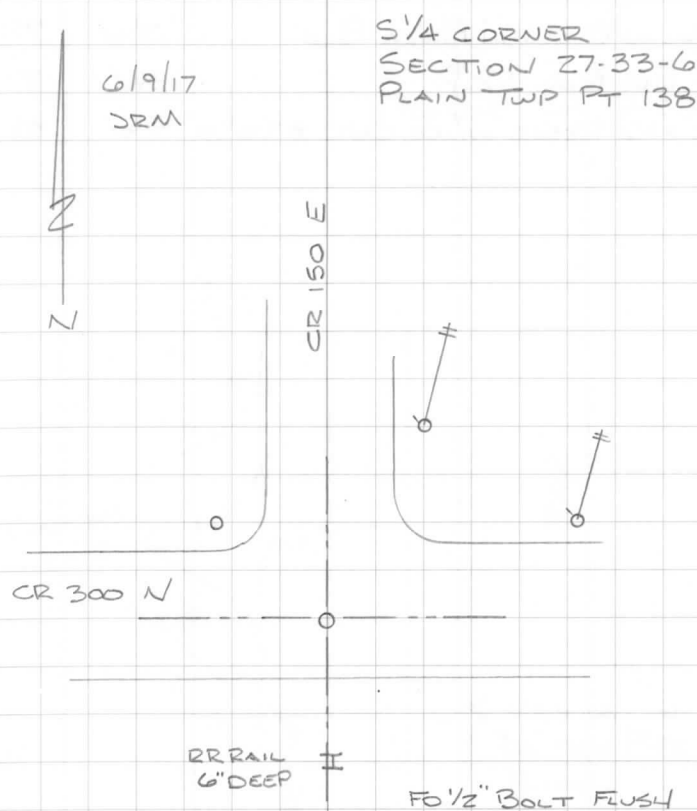
DESCRIPTION

BEARING DISTANCE

| | | |
|--|-----|--------|
| NAIL IN B. CAP IN POWER POLE | NNE | 74.92' |
| NAIL IN B. CAP IN POWER POLE | ENE | 52.50' |
| 1/2" X 16" REBAR W/ CO. CAP 13.0' TO E/P | NW | 51.35' |
| FO REMAIN OF RR RAIL FCP IN CONC | S | 19.95' |

PLAIN

18



"KIMPEL" SURVEY JAN 13, 2000 # 2000-01-1000

SURVEY FIELD BOOK 7 Pg 32

DESCRIPTION

BEARING DISTANCE

NAIL IN B. CAP IN POWER POLE

NW

72.85'

E RR RAIL FCP

W

20.15'

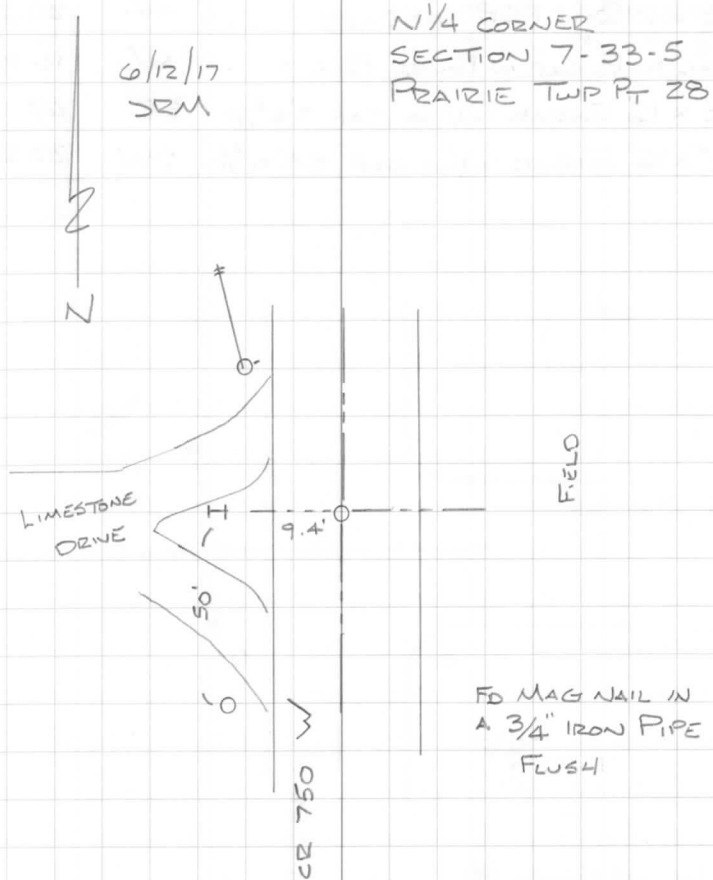
 $\frac{1}{2}$ " x 16" REBAR w/ CO. CAP 8.7 TO E/P

SW

53.62'

PRAIRIE

19



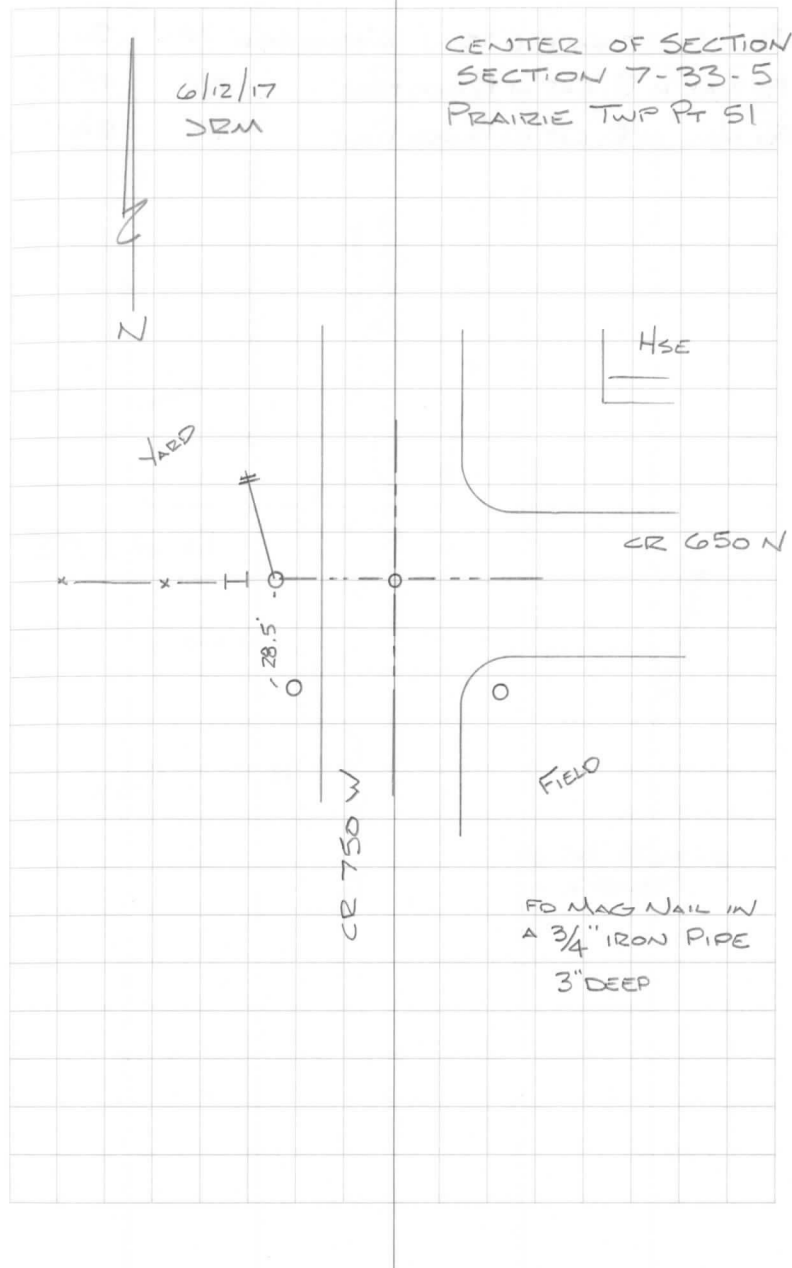
DESCRIPTION

BEARING DISTANCE

| | | |
|--|----|--------|
| 4 RR RAIL FCP AT BASE | W | 20.2' |
| NAIL IN B. CAP IN POWER POLE | W | 16.82' |
| 1/2" x 16" REBAR W/CO. CAP 7' to E/P | SE | 62.78' |
| 1/2" x 16" REBAR W/CO. CAP 8.5' to E/P | SW | 33.27' |

PRAIRIE

20



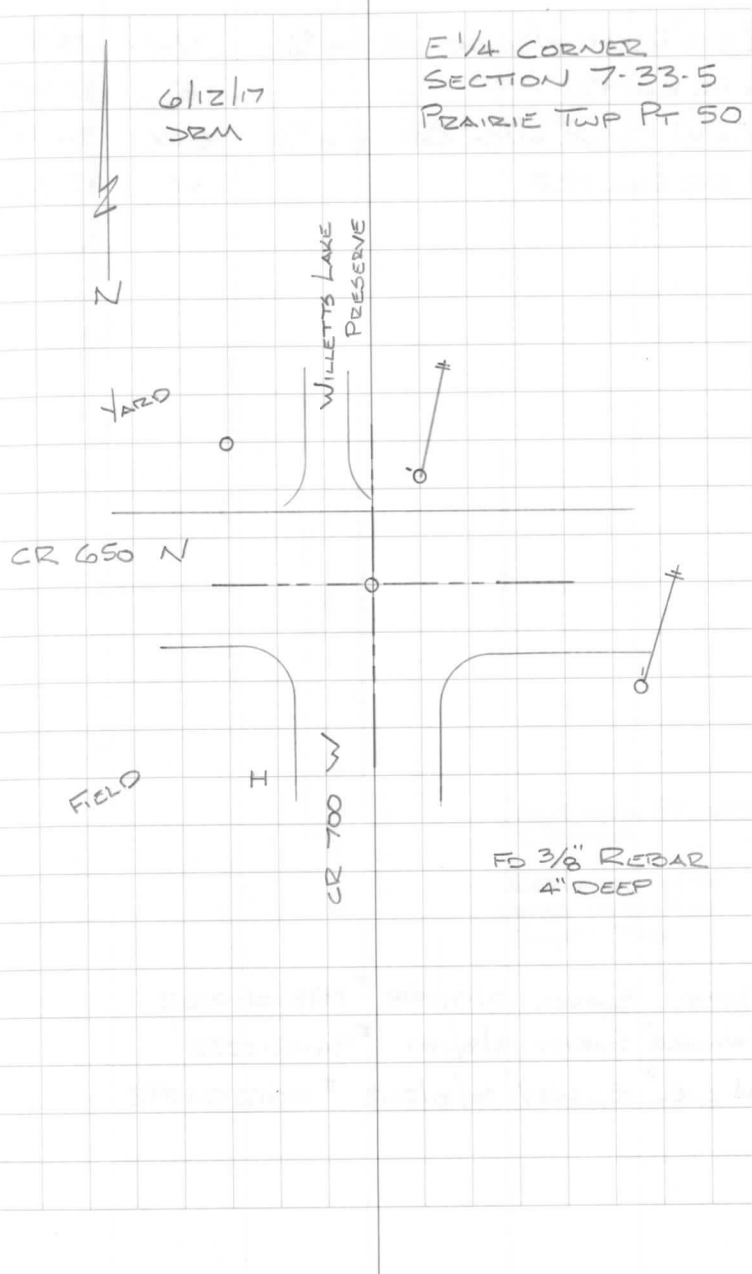
DESCRIPTION

BEARING DISTANCE

| | | |
|---|----|--------|
| FO "WALKER" CAPPED IRON 6" ABOVE GROUND | NW | 36.04' |
| FO NAIL IN B. CAP IN POWER POLE | NE | 15.53' |
| FO NAIL IN B. CAP IN POWER POLE | SE | 84.53' |

PRAIRIE

21



DESCRIPTION

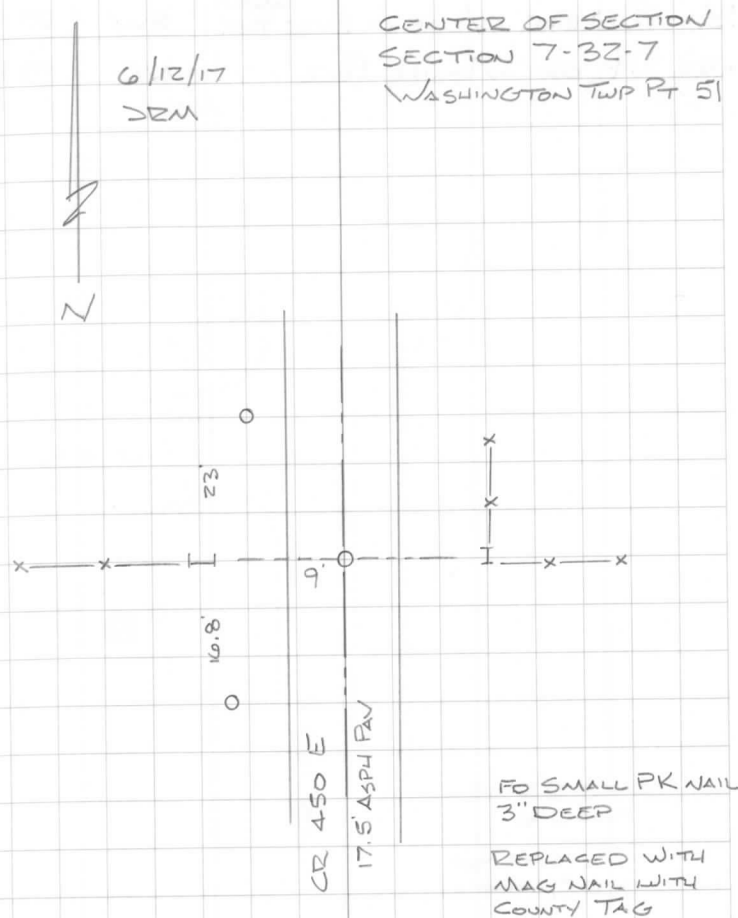
BEARING DISTANCE

| | | | |
|----------------------------|--------------|----|--------|
| 1/2" x 16" REBAR w/Co. CAP | S. 7' TO E/P | NW | 26.99 |
| 4 RR RAIL FCP | | E | 15.75' |
| 1/2" x 16" REBAR w/Co. CAP | 8' TO E/P | SW | 24.75' |
| 4 RR RAIL FCP | | W | 15.55' |

"LONG" SURVEY 7/17/1998 #1998-01-0762
 "WALKER" SURVEY 9/8/1994 #94-12-0222
 "MICHEL" SURVEY 8/8/2012 #2012121092

WASHINGTON

22



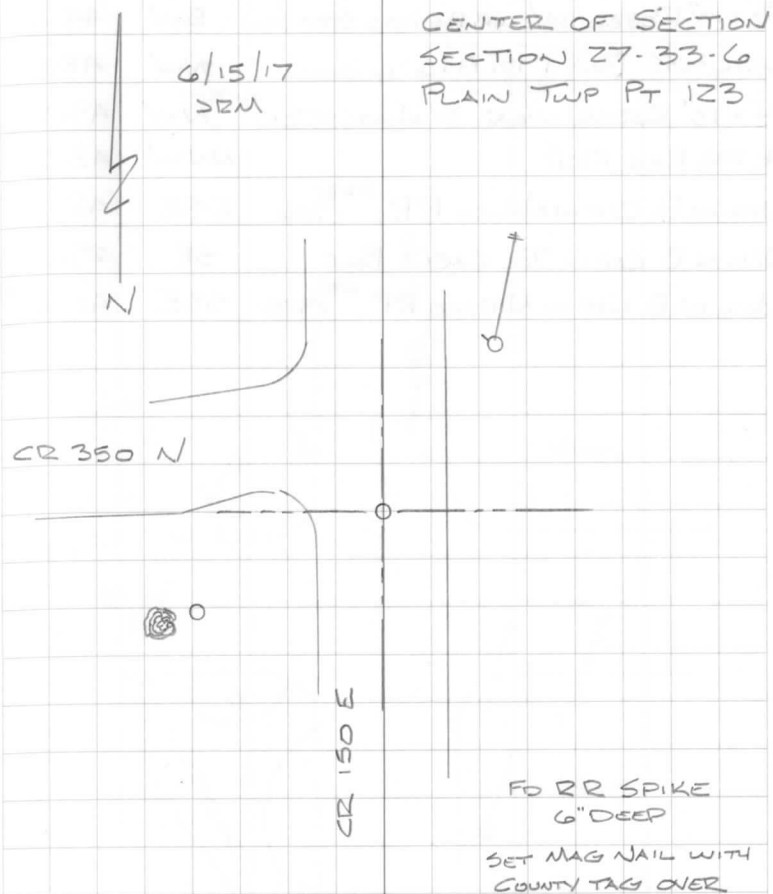
DESCRIPTION

BEARING DISTANCE

| DESCRIPTION | BEARING | DISTANCE |
|---|---------|----------|
| 1/2" x 18" REBAR w/ CAP AT BASE ^{MAPLE} TREE | SW | 39.95' |
| NAIL IN B. CAP IN POWER POLE | NE | 59.08' |

PLAIN

23



SURVEY FIELD NOTE BOOK 7 Pg 32 1970's?

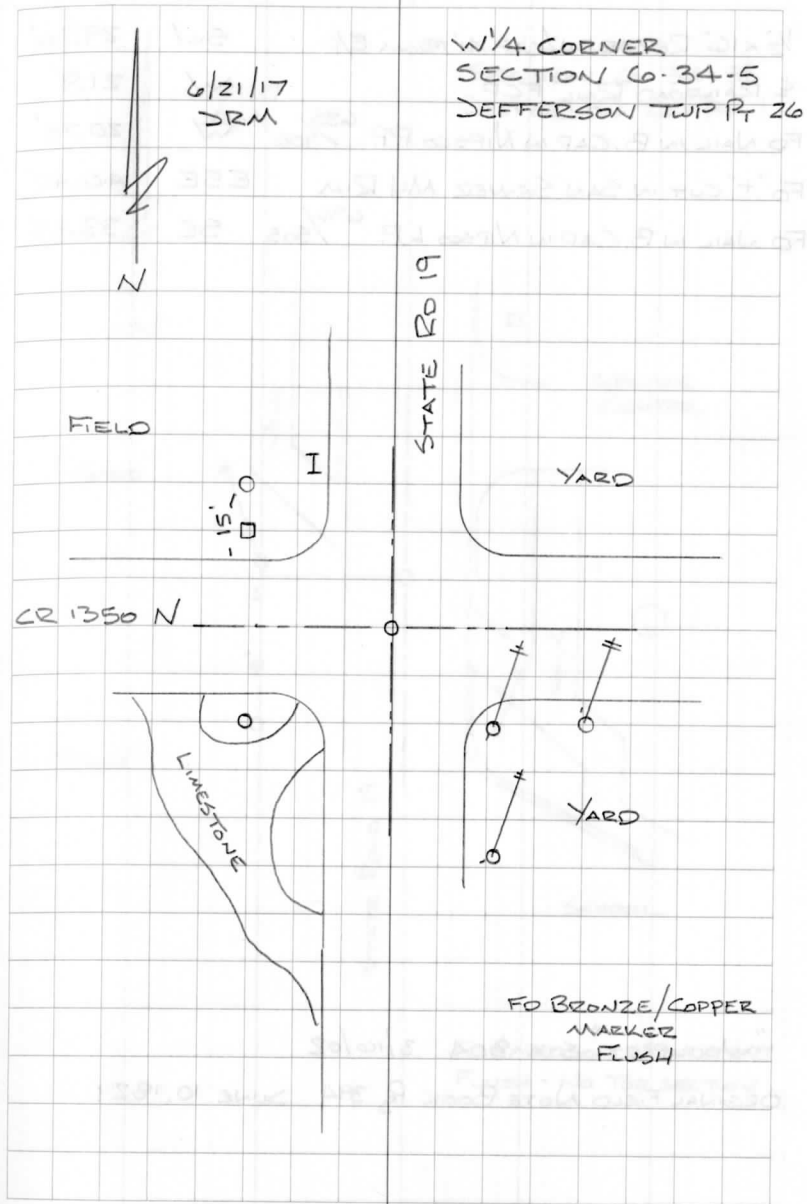
DESCRIPTION

BEARING DISTANCE

| | | |
|---|-----|--------|
| 1/2" x 18" REBAR w/CAP BESIDE STOP SIGN | SW | 44.25' |
| USC & GS BM D171 1946 IN CONC | NW | 45.04' |
| 1/2" x 18" REBAR w/CAP 8' NORTH OF BM | NW | 49.04' |
| & RR RAIL FCP | NNW | 43.6' |
| NAIL IN B. CAP IN NIPSCO P.P. ⁶⁸⁸ / ₃₀₆ | ESE | 42.23' |
| NAIL IN B. CAP IN TEL CABLE POLE | SE | 29.36' |
| NAIL IN B. CAP IN NIPSCO P.P. ⁶⁸⁵ / ₉₂₅ | SSE | 40.45' |

JEFFERSON

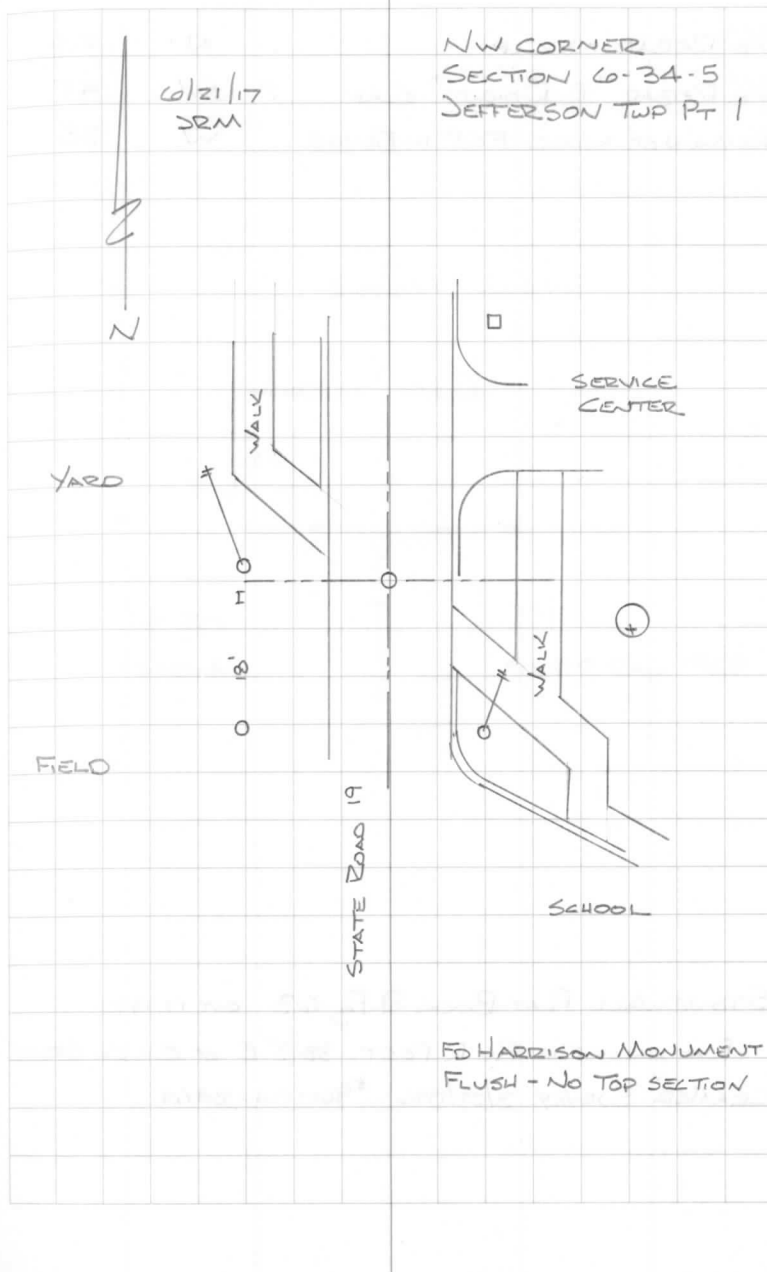
24



| DESCRIPTION | BEARING | DISTANCE |
|--|---------|----------|
| 1/2" x 16" REBAR W/CAP 11' FROM E/P | SW | 29.36' |
| RAILROAD RAIL FCP | W | 21.9' |
| FO NAIL IN B. CAP IN NIPSCO PP. ⁶⁸⁵ / ₉₀₆ | W | 20.75' |
| FO "4" CUT IN SAN SEWER MH RIM | ESE | 40.47' |
| FO NAIL IN B. CAP IN NIPSCO L.P. ⁶⁷⁶ / ₅₀₅ | SE | 33.55' |

JEFFERSON

25



"WOOLPERT" STA 804 3/16/02

ORIGINAL FIELD NOTE BOOK P. 394 JUNE 10, 1829

| DESCRIPTION | BEARING | DISTANCE |
|-----------------------------|---------|----------|
| 5/8" REBAR NO CAP | N | 2.3' |
| 5/8" REBAR "B. DOIRLOT" CAP | W | 42' |
| REMAIN OF WOOD FCP IN FENCE | W | 38' |

STONEWALL PLAT BOOK 9 Pg 63 OCT 17, 1990

PLAT CALLS FOR RY R POST 38.3' E OF ELK CO STONE
"CRAMER" SURVEY 3/27/1996 #96-04-8461

JEFFERSON

26

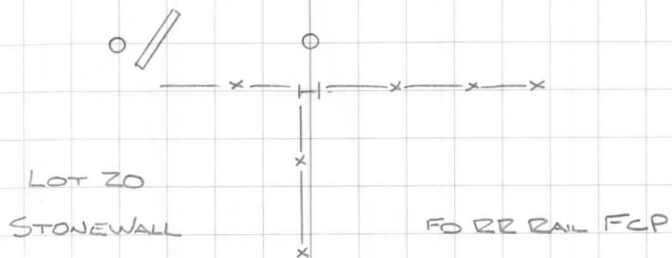


6/21/17
JRM

N¹/₄ CORNER
SECTION 6-34-5
JEFFERSON TWP PT 2

ELKHART COUNTY

WOODED AREA

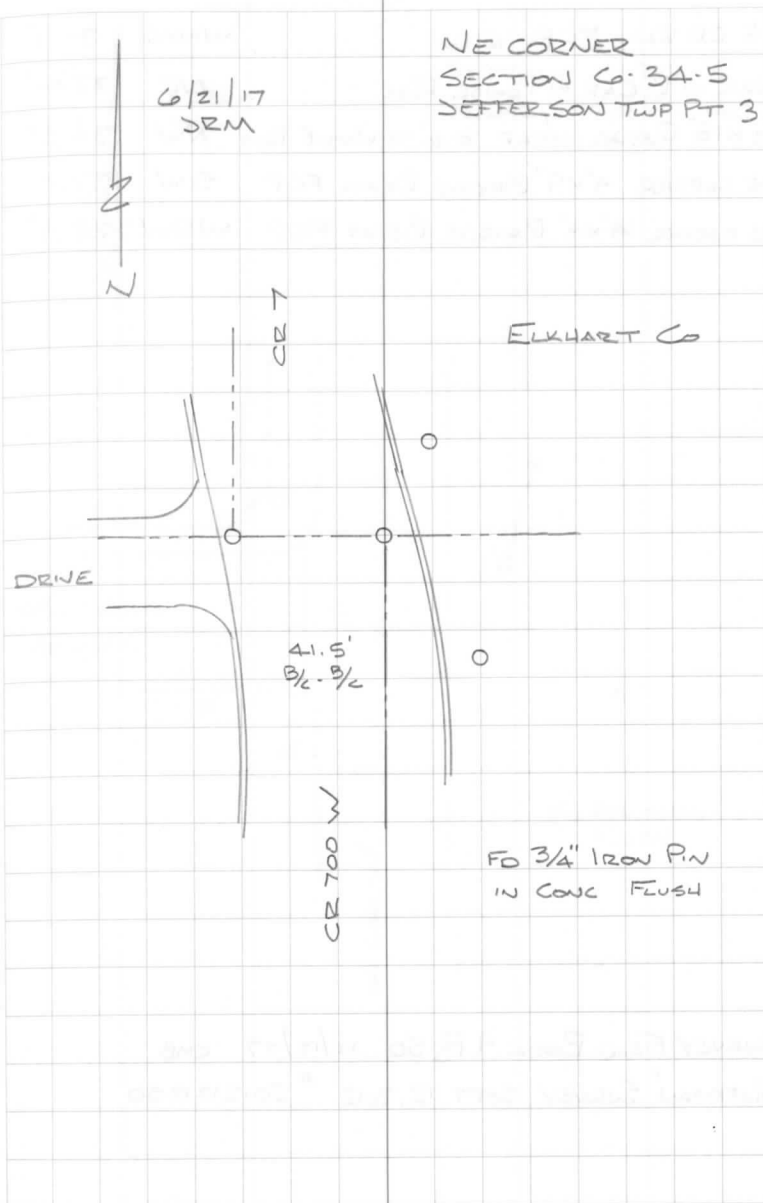


| DESCRIPTION | BEARING | DISTANCE |
|---------------------------------------|---------|----------|
| 1/2" x 18" REBAR w/CAP 1.0' FROM B/C | NE | 18.66' |
| 1/2" x 18" REBAR w/CAP 1.0' FROM B/C | SE | 25.50' |
| 3/4" IRON PIN IN CONC (ELK CO CORNER) | W | 34.00' |
| BACK OF CURB | E | 5.85' |

ORIGINAL FIELD NOTE BOOK Pg 415 JULY 19, 1835
 INTERSECTED 55 LKNS EAST OF POST (34.3)

JEFFERSON

27



DESCRIPTION

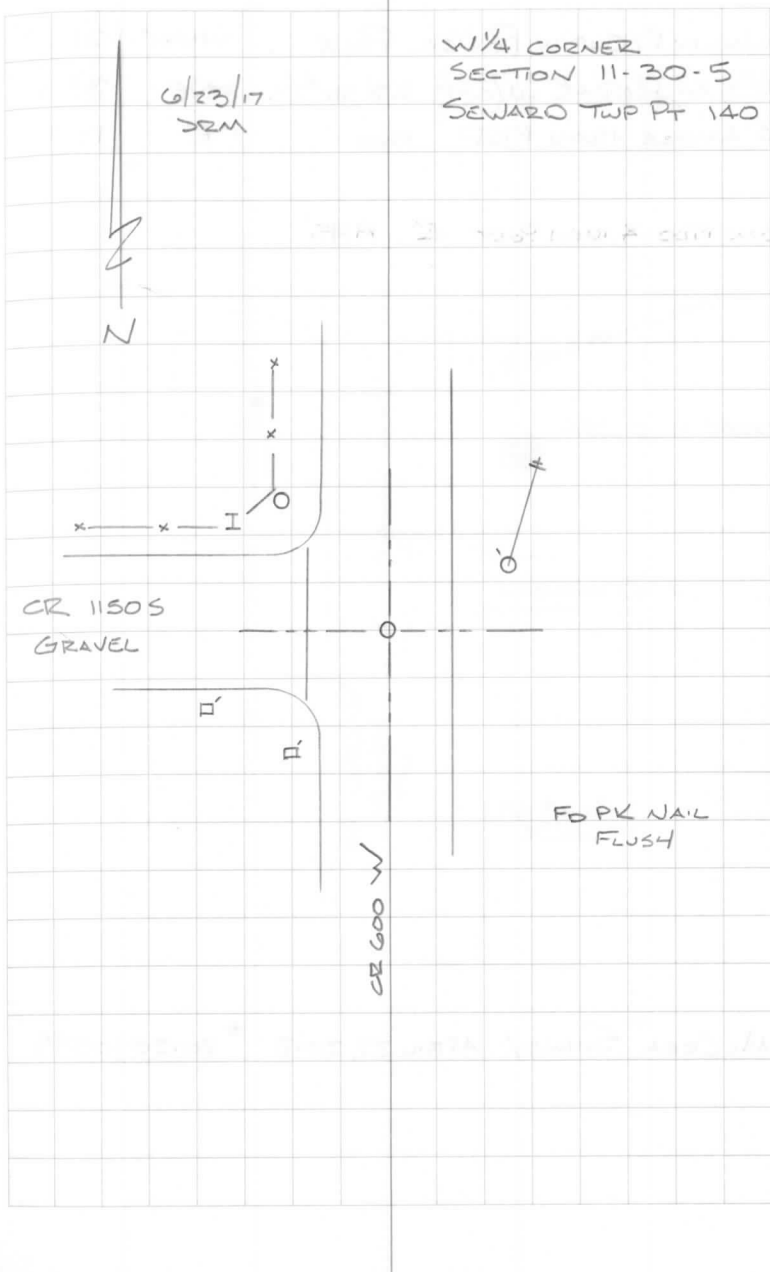
BEARING DISTANCE

| | | |
|---|-----|--------|
| E RR RAIL FCP | WNW | 35.1' |
| NAIL IN B CAP IN POWER POLE | NE | 22.04' |
| 1/2"x18" REBAR W/CAP 0.6' TO WOOD F. POST | NW | 34.35' |
| NE CORNER 4"x9" BRIDGE BEAM FCP | SW | 37.4' |
| NE CORNER 4"x9" BRIDGE BEAM FCP | WSW | 38.9' |

SURVEY FIELD BOOK 9 Pg 50 12/13/77 CMB
 "HUFFMAN" SURVEY SEPT 12, 2012 # 2012121250

SEWARD

28



DESCRIPTION

BEARING DISTANCE

NAIL IN B CAP IN POWER POLE

WNW 21.33'

1/2" x 16" REBAR W/CAP 8.8' TO E/P

NE 35.76'

3" ANGLE IRON FCP FACE

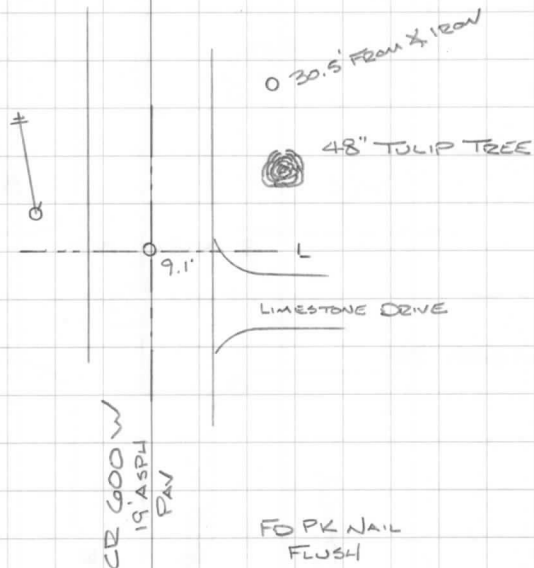
E 19.91'

JAN 1980 X IRON POST E 19.95'

"McCREA" SURVEY APRIL 27, 2012 # 2012050599

SEWARD

29

6/23/17
JRME 1/4 CORNER
SECTION 15-30-5
SEWARD TWP PT 158FO PK NAIL
FLUSH

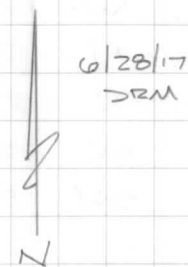
DESCRIPTION

BEARING DISTANCE

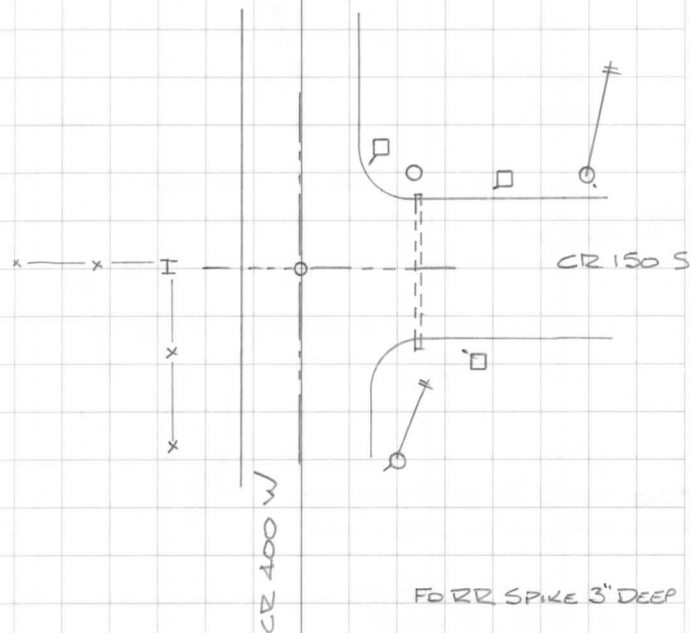
| | | |
|---|-----|--------|
| £ RR RAIL FCP | W | 20.5' |
| SW CORNER 15" SQ CONCRETE FCP | NNE | 43.2' |
| 1/2" x 16" REBAR W/CAP 10.5' FROM CONC POST | NE | 45.20' |
| SW CORNER 6" x 12" BRIDGE BEAM POST | ENE | 59.6' |
| 1 NAIL IN B. CAP IN REMC POWER POLE | ENE | 68.47' |
| NW CORNER 8" x 12" BRIDGE BEAM POST | SE | 46.6' |
| NAIL IN B. CAP IN REMC P. POLE 0225 | SSE | 49.07' |

HARRISON

31



W 1/4 CORNER
SECTION 23-32.5
HARRISON TWP PT



FOR RR SPIKE 3" DEEP
SET MAG NAIL IN TAG
OVER TOP

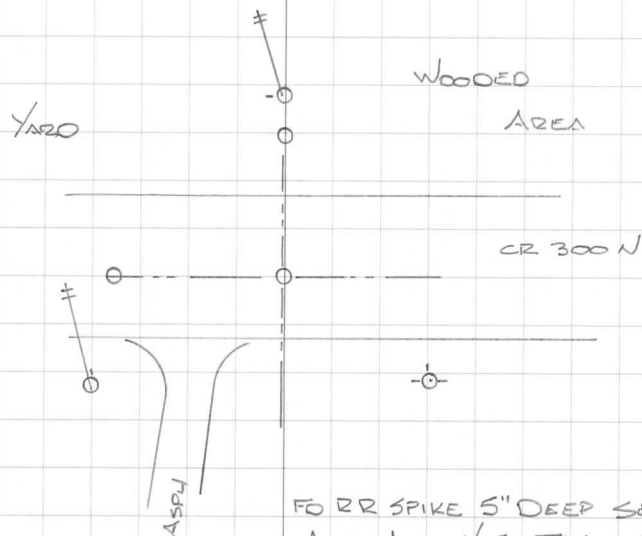
DESCRIPTION

BEARING DISTANCE

| | | |
|--------------------------------------|----|--------|
| FO "WALKER" MAG NAIL W/TAG IN ϕ | NW | 31.95' |
| FO MAG NAIL IN W. FACE POWER POLE | N | 28.60' |
| FO "RE WARD 50432" CAPPED IRON | N | 24.86' |
| ϕ OF TOP NUT FIRE HYDRANT | SE | 23.85' |
| NAIL IN B. CAP IN POWER POLE | SW | 56.04' |

PLAIN

32

6/29/17
JRMNE CORNER
SECTION 31-33-6
PLAIN TWP PT 133FO RR SPIKE 5" DEEP SET
MAG NAIL W/ CO TAG OVERFO SMALL MAG NAIL
0.03' E, 0.2' S

"MICHEL" SURVEY 2/14/06 #2006 0000 1785

6/6/18 - SET HARRISON MONUMENT - REMOVED RR SPIKE

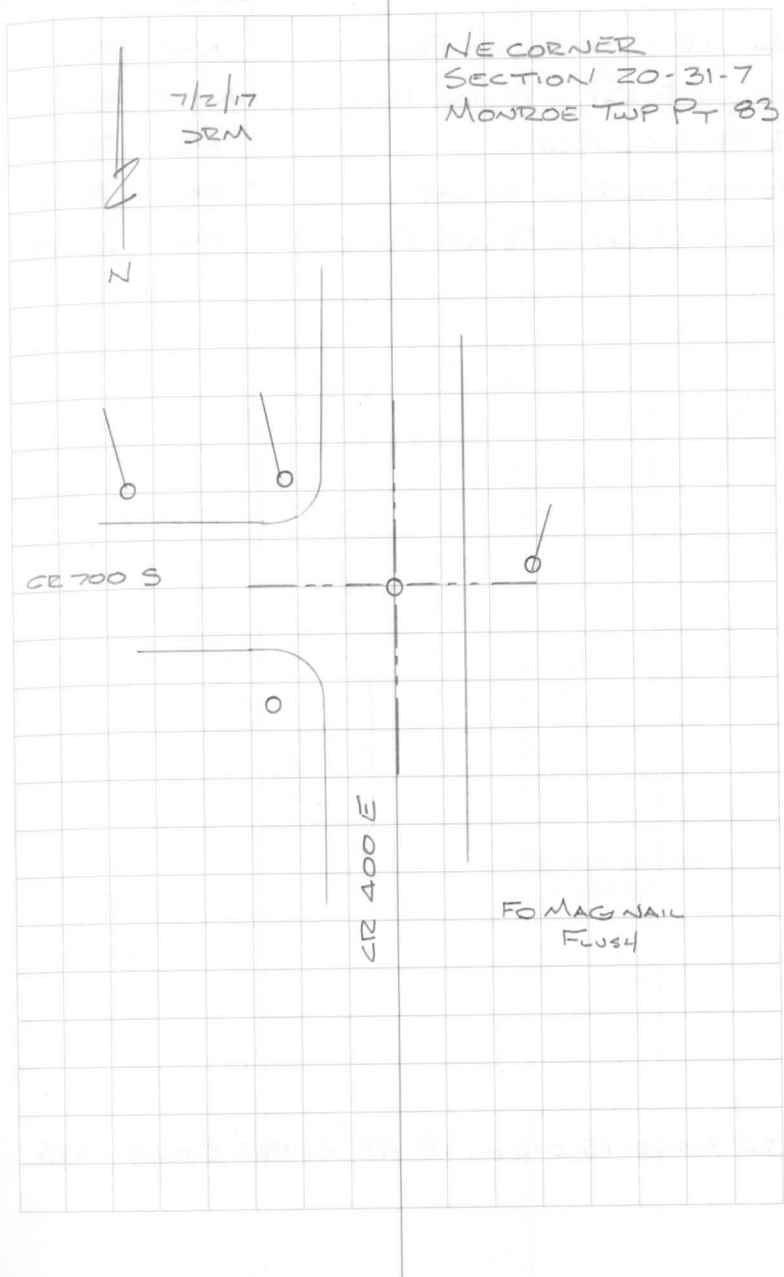
BRIDGE OVER THE RIVER TO WEST BEING REPLACED
THIS DAY

DESCRIPTION

BEARING DISTANCE

| | | |
|------------------------------|-----|--------|
| NAIL IN B. CAP IN POWER POLE | WNW | 74.29' |
| NAIL IN B. CAP IN POWER POLE | NW | 42.91' |
| NAIL IN B. CAP IN FENCE POST | ENE | 22.73' |
| 1/2" x 16" REBAR W/GO CAP | SW | 45.45' |

MONROE



DESCRIPTION

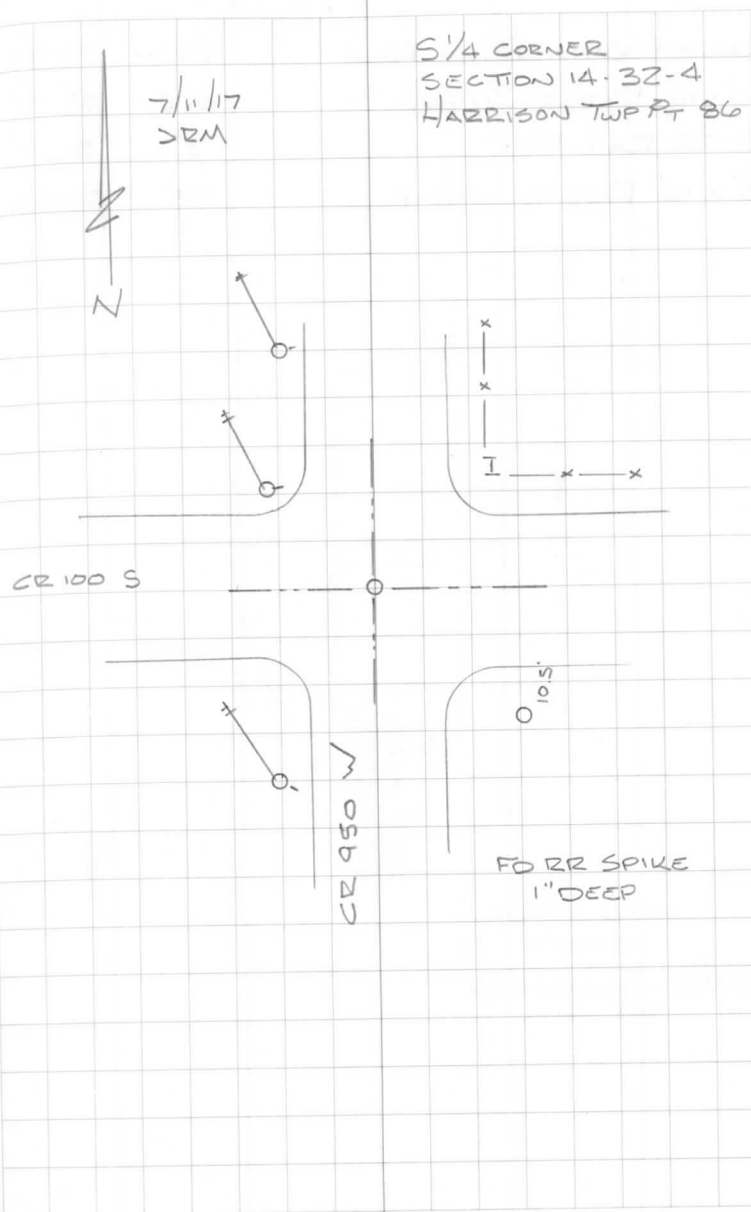
BEARING DISTANCE

| | | |
|------------------------------|-----|--------|
| NAIL IN B. CAP IN POWER POLE | NW | 38.00' |
| NAIL IN B. CAP IN POWER POLE | NNW | 80.62' |
| 4 RR RAIL FCP | NE | 36.15' |
| 1/2" x 18" REBAR W/ CO CAP | SE | 36.25' |
| NAIL IN B. CAP IN POWER POLE | SW | 61.00' |

SEE SURVEY FIELD BOOK Pg 43 'KEMPER' SURVEY 1995

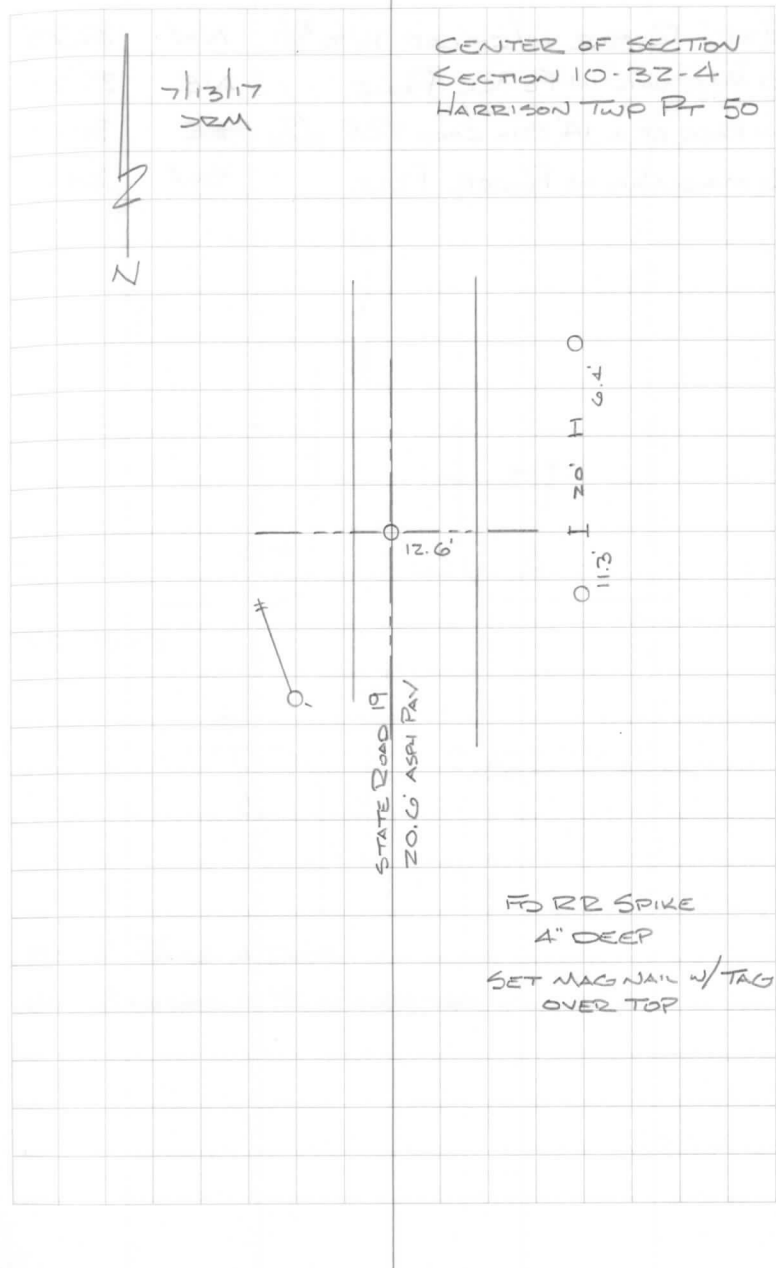
HARRISON

34



HARRISON

| DESCRIPTION | BEARING | DISTANCE |
|------------------------------|---------|----------|
| NAIL IN B. CAP IN POWER POLE | SSW | 73.97' |
| 1/2" x 16" REBAR W/ CAP | NE | 33.28' |
| 1/2" RR RAIL FCP | E | 20.15' |
| 1/2" x 16" REBAR W/ CAP | SE | 22.66' |



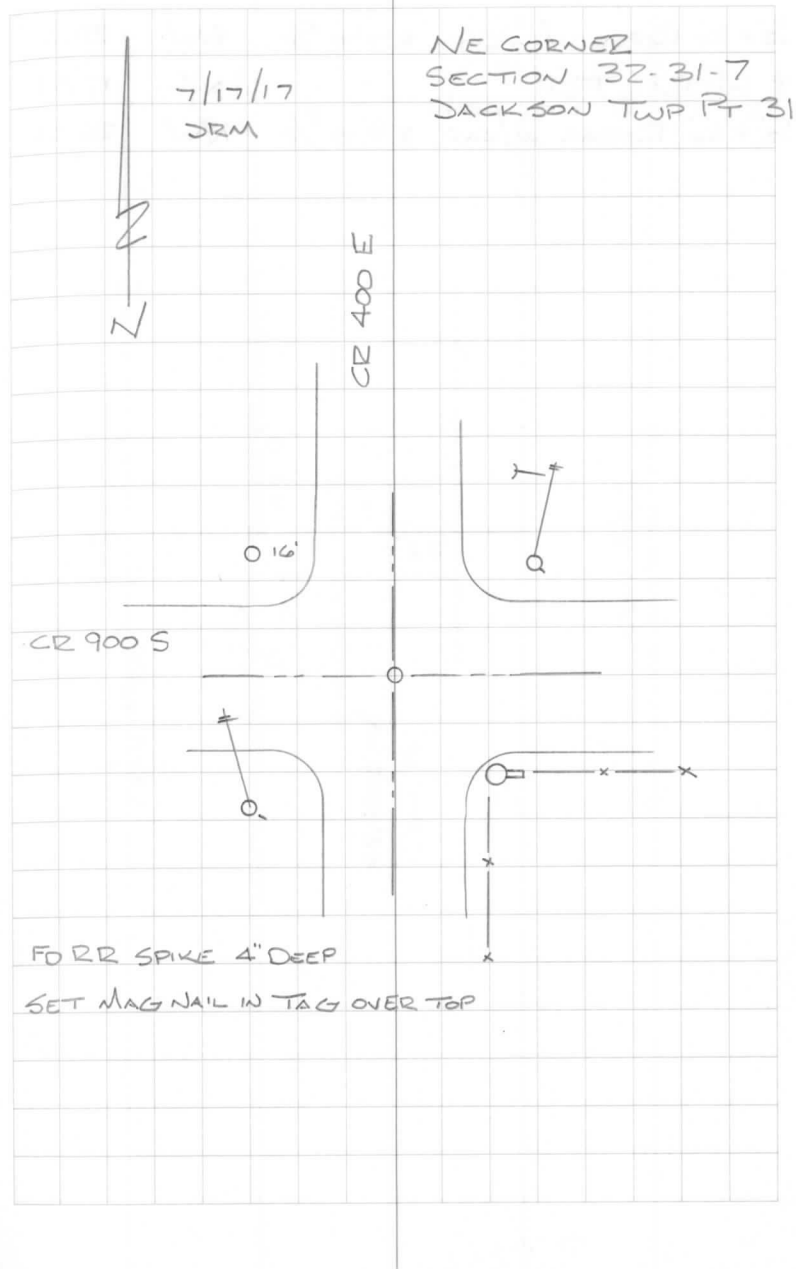
DESCRIPTION

BEARING DISTANCE

| | | |
|--|----|--------|
| 1/2" x 16" REBAR w/ CO CAP 16' TO E/P | NW | 37.78' |
| FO MAG NAIL IN POWER POLE | NE | 37.38' |
| NW FACE OF A 14" DIA CONC FCP ^{AT} BASE | SE | 30.04' |
| FO MAG NAIL IN POWER POLE | SW | 34.67' |

JACKSON

36



DESCRIPTION

BEARING DISTANCE

| | | |
|---------------------------------------|----|--------|
| 1/2" x 16" REBAR w/CO CAP 8.7' TO E/P | SW | 30.30' |
| 1/2" RR RAIL FCP | W | 17.55' |
| 1/2" x 16" REBAR w/CAP 8.7' TO E/P | NW | 26.24' |

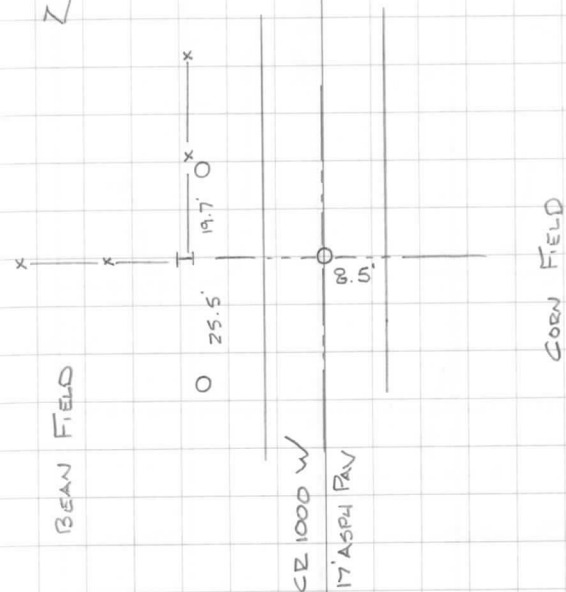
HARRISON

37

7/19/17
JRM

N

NE CORNER
SECTION 10-32-4
HARRISON TWP PT 22

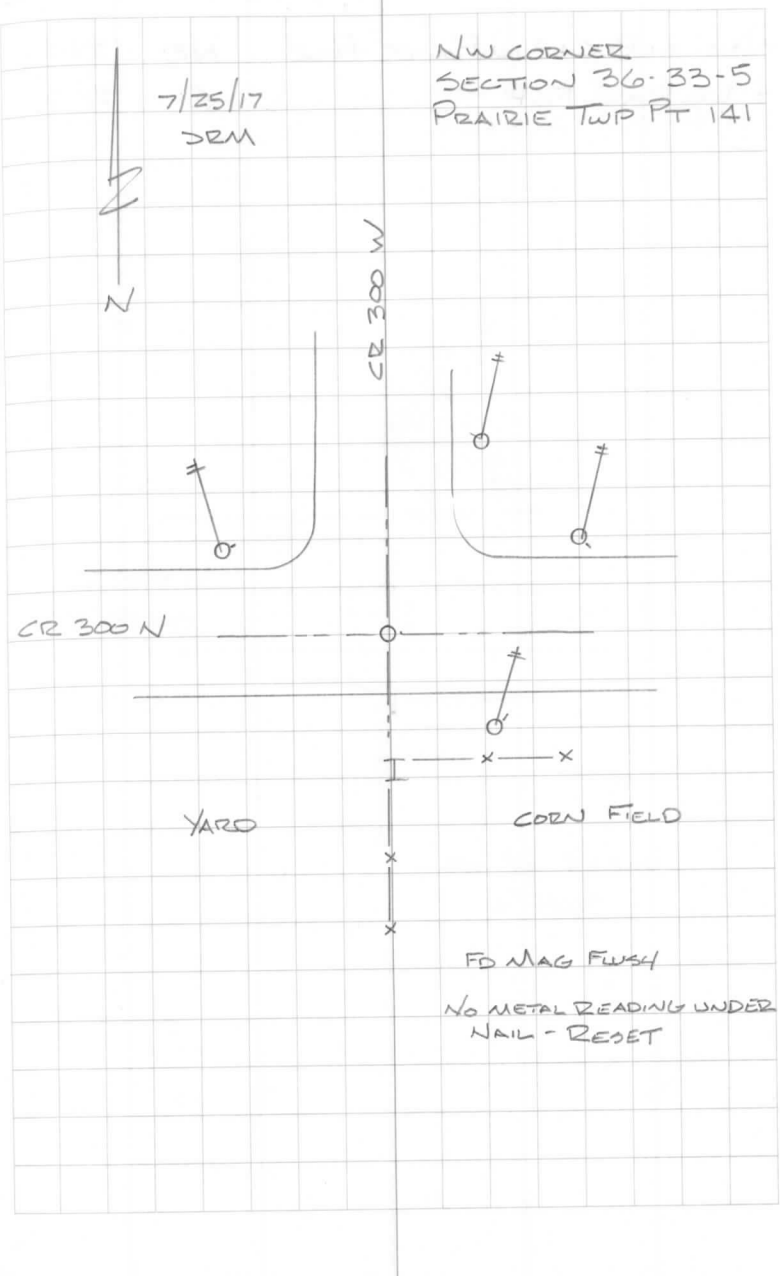


DESCRIPTION

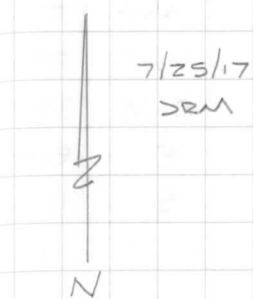
BEARING DISTANCE

| | | |
|---|-----|--------|
| NAIL IN B. CAP IN NIPSCO P. POLE $\frac{1070}{287}$ | NW | 48.50' |
| NAIL IN B. CAP IN POWER POLE | NNE | 61.97' |
| NAIL IN B. CAP IN POWER POLE | ENE | 47.02' |
| NAIL IN B. CAP IN POWER POLE | SE | 21.85' |
| ± RR RAIL FCP | S | 20.25' |

PRAIRIE

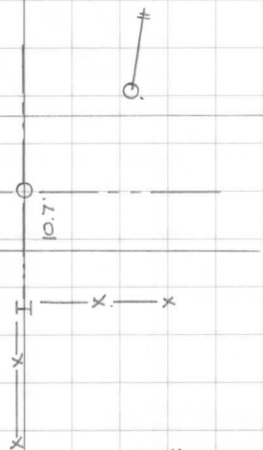


| DESCRIPTION | BEARING | DISTANCE |
|------------------------------|---------|----------|
| NAIL IN B. CAP IN POWER POLE | NE | 22.57' |
| 4 RR RAIL FCP | S | 23.37' |



N 1/4 CORNER
SECTION 36-33-5
PRAIRIE TWP PT 142

CR 300 N
22' GRAVEL



FD 5/8 REBAR
6" DEEP

DESCRIPTION

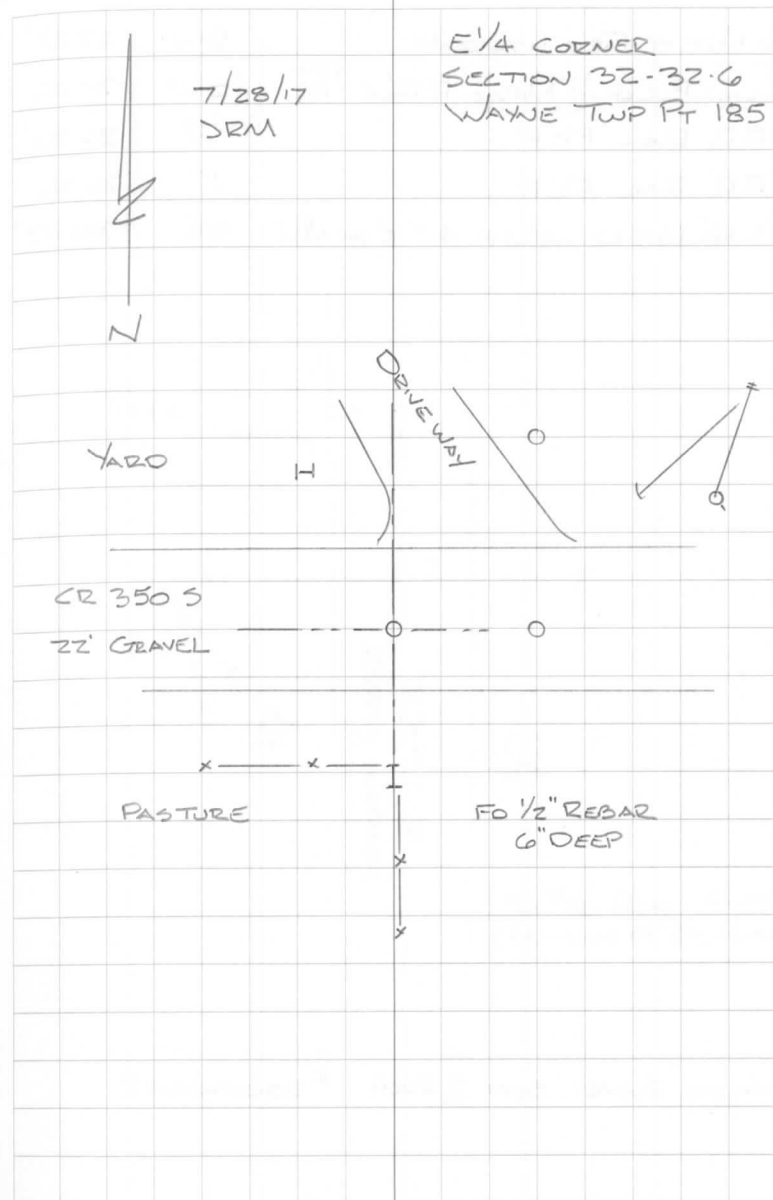
BEARING DISTANCE

| | | |
|--|-----|--------|
| 4 RR RAIL FCP | NW | 23.6' |
| FO 1/2" CAPPED REBAR "WALKER" | NE | 21.60' |
| NAIL IN B CAP IN POWER POLE ^{REMC} 5812 | ENE | 39.99' |
| FO RR SPIKE 6" DEEP | E | 8.00' |
| 4" x 8" I-BEAM FCP | S | 18.41' |

"WALKER" SURVEY #2002121554 12/19/02

WAYNE

40



DESCRIPTION

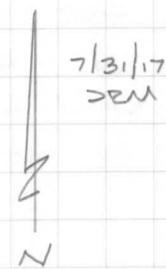
BEARING DISTANCE

| | | |
|---|----|--------|
| TOP NUT OF FIRE HYDRANT | SW | 27.27' |
| NAIL IN B. CAP IN N. PS&D P. Pole ¹⁰⁷¹ 198 | SW | 30.00' |
| 4 RR RAIL FCP | W | 26.25' |
| 4 RR RAIL FCP | E | 20.26' |
| 1/2" x 16" REBAR W/ CAP 4.3' E OF MH | SE | 34.43' |

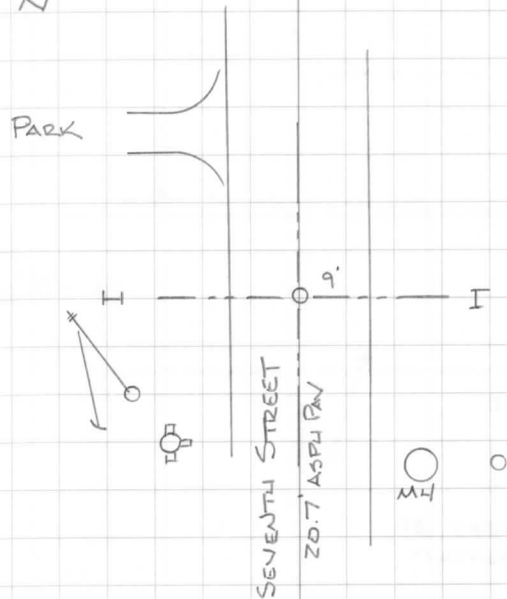
"WALKER" SURVEY SEPT 3, 2009 #2010010402

WASHINGTON

41

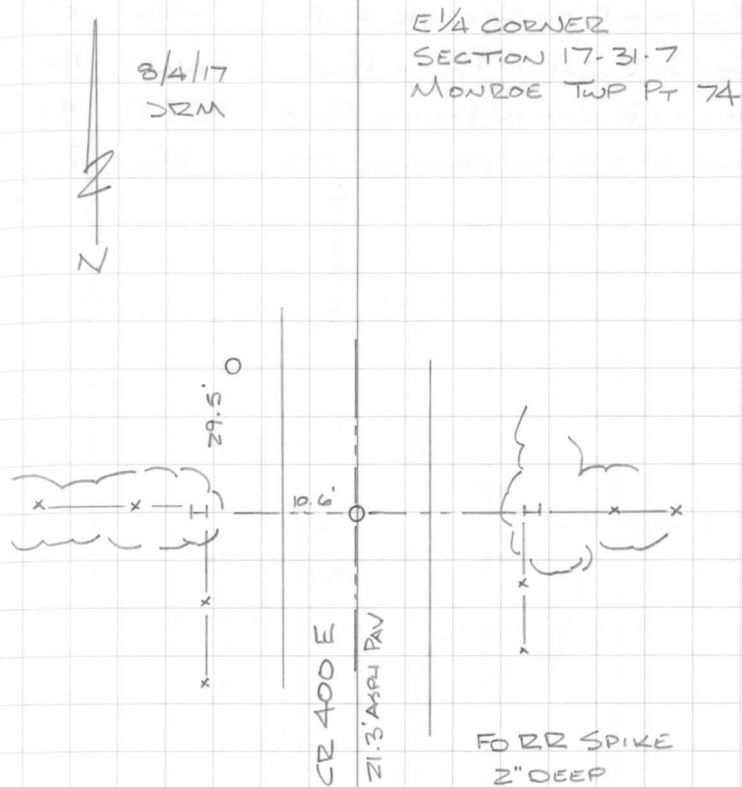


SW CORNER
SECTION 27-32-7
WASHINGTON TWP R 137



FO 5/8" ROD FLUSH
(REMAINS OF BR MARKER)

| DESCRIPTION | BEARING | DISTANCE |
|-----------------------------------|---------|----------|
| 1/2 RR RAIL FCP | W | 21.24' |
| 1/2 x 16" REBAR w/CAP 7.0' TO E/P | NW | 34.10' |
| 1/2 RR RAIL FCP | E | 21.18' |



DESCRIPTION

| | | |
|--------------------------------|-----|---------|
| FACE OF A 12" DIA CONCRETE FCP | WSW | 23.08' |
| NAIL IN B. CAP IN POWER POLE | NNE | 110.55' |
| NAIL IN B. CAP IN POWER POLE | ESE | 49.42' |
| FACE OF A 12" DIA CONCRETE FCP | SE | 35.92' |

"WALKER" SURVEY DOC # 2003102214

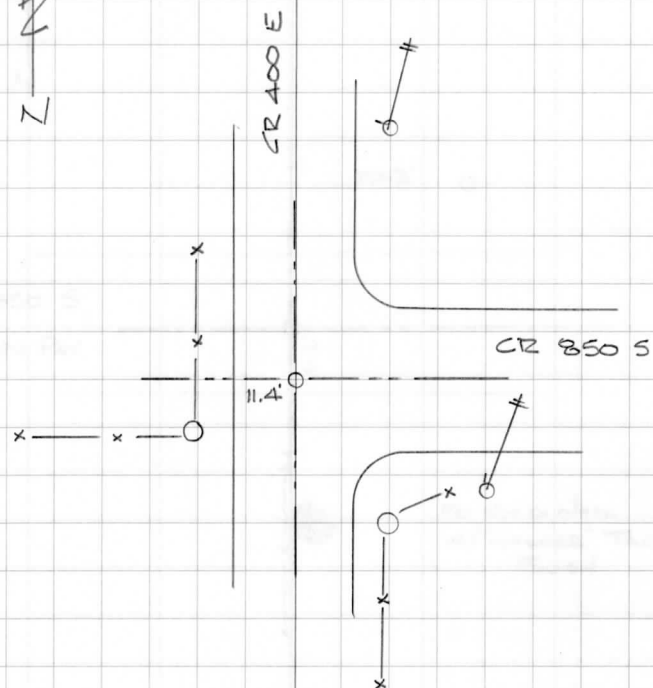
"KIMPEL" SURVEY 5/21/1996 DOC # 96-06-0172

JACKSON

44

8/9/17
JRM

W 1/4 CORNER
SECTION 28-31-7
JACKSON TWP RT 22



SET MAG NAIL
W/CO TAG OVER
1" IRON PIPE
3" DEEP

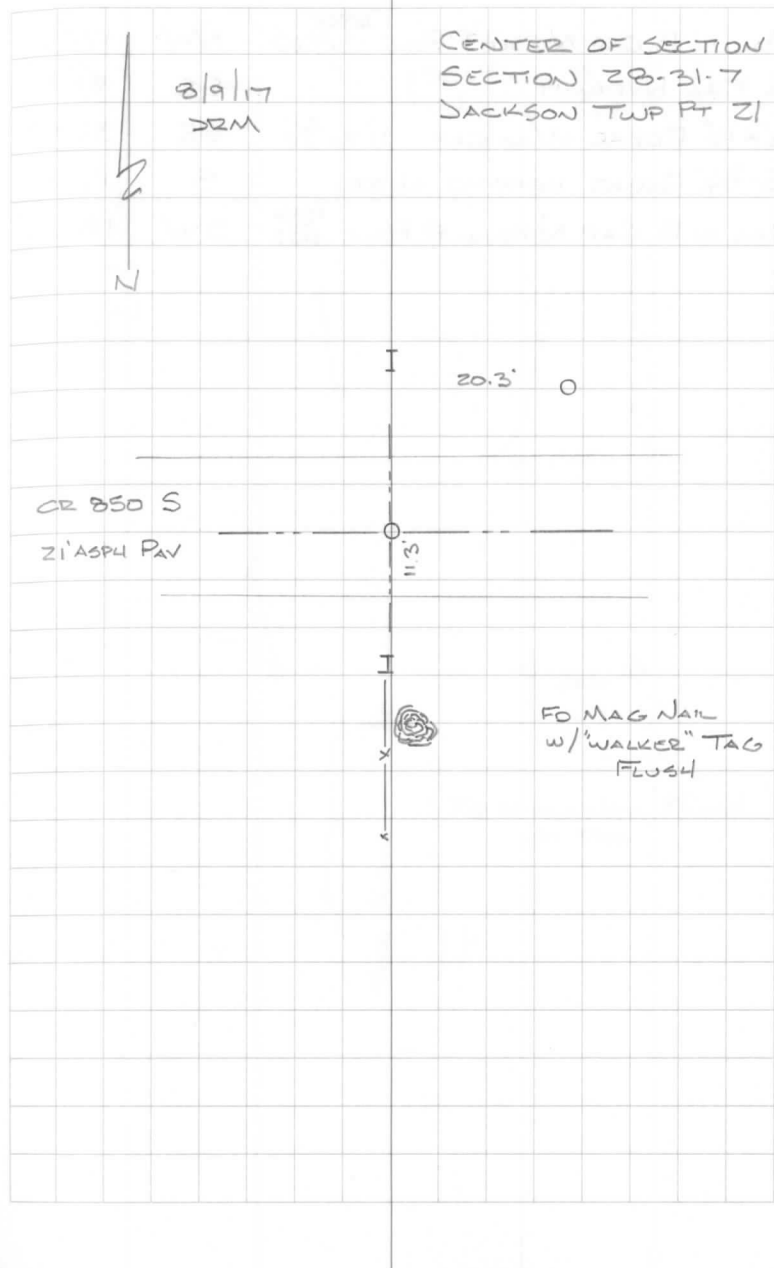
DESCRIPTION

BEARING DISTANCE

JACKSON

45

| DESCRIPTION | BEARING | DISTANCE |
|------------------------------------|---------|----------|
| ERR RAIL FCP | N | 19.33' |
| 1/2" x 16" REBAR w/CAP 9.1' TO E/P | NE | 27.73' |
| ERR RAIL FCP | S | 19.16' |



"WALKER" SURVEY DOC # 2003102214

"KIMPEL" SURVEY 5/21/1996 DOC # 96-06-0172

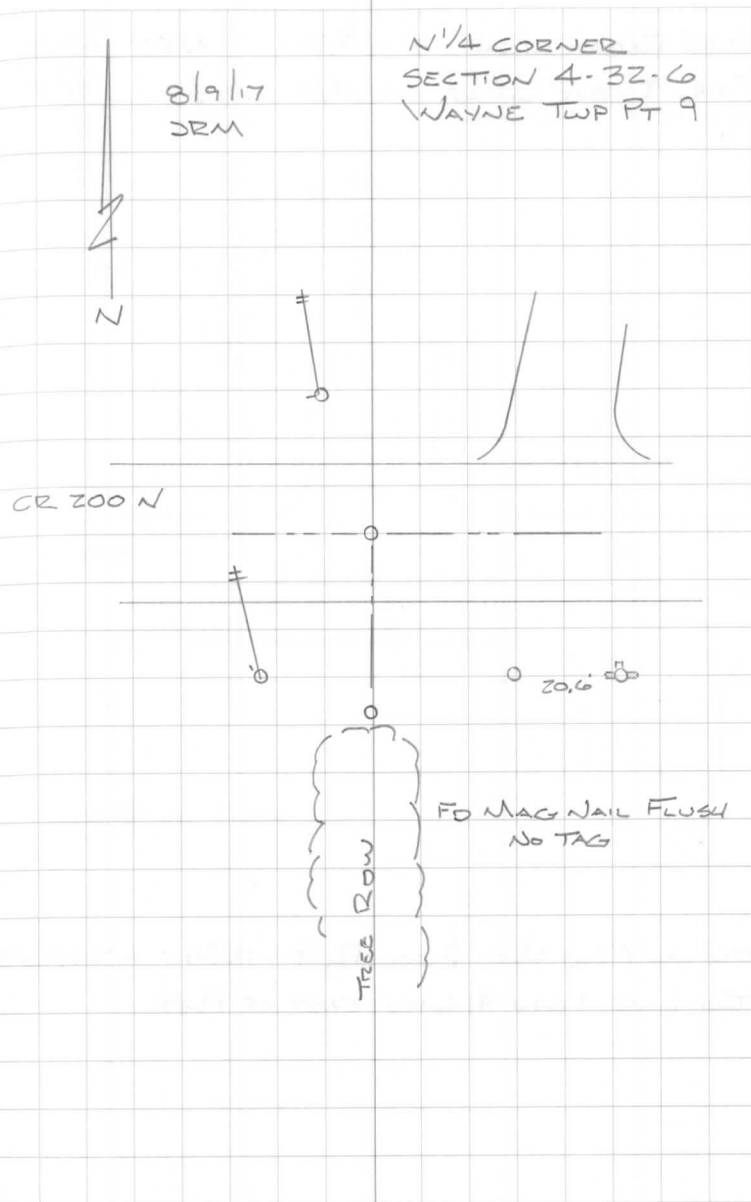
DESCRIPTION

BEARING DISTANCE

| | | | |
|---------------------------------------|---------------------------------|----|--------|
| NAIL IN B. CAP NIPSCO P POLE | ⁶³⁶ / ₅₆₃ | NW | 17.77' |
| & FIRE HYDRANT | | SE | 51.7' |
| 1/2" x 16" REBAR W/ CO CAP 11' TO E/P | | SE | 32.57' |
| FO 3/8" REBAR LEANING NORTH | | S | 19.7' |
| NAIL IN B. CAP NIPSCO P POLE | ⁶²⁶ / ₀₆₃ | SW | 18.60' |

WAYNE

46



DESCRIPTION

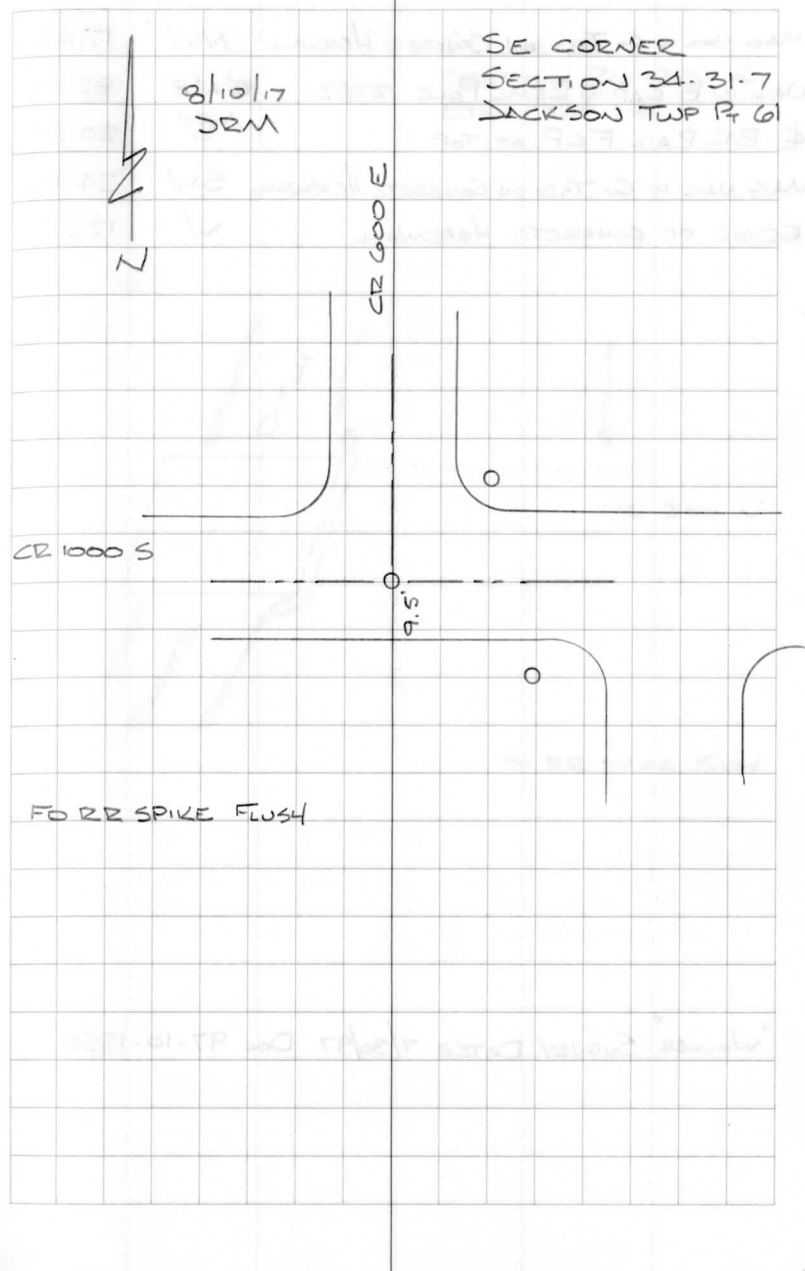
BEARING DISTANCE

| | | |
|-----------------------------------|----|--------|
| 1/2" X 16" REBAR W/CAP 3' TO E/P | NE | 44.83' |
| 1/2" X 16" REBAR W/CAP 12' TO E/P | SE | 37.95' |

ORIGINAL FIELD NOTE BOOK Pg 9 1834 - INTERSECTED
TWP LINE 1 CHN 4 LNKs EAST OF POST

JACKSON

47



DESCRIPTION

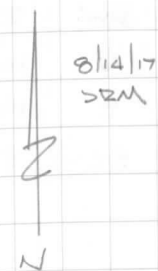
BEARING DISTANCE

| | | |
|---|-----|--------|
| MAG NAIL IN C ₆ TAG ON CONCRETE HEADWALL | NW | 17.62' |
| NAIL IN B. CAP IN RAIL POLE 2753 | ENE | 82.22' |
| RR RAIL FCP AT TOP | S | 20.28' |
| MAG NAIL IN C ₆ TAG ON CONCRETE HEADWALL | SW | 24.04' |
| EDGE OF CONCRETE HEADWALL | W | 12.62' |

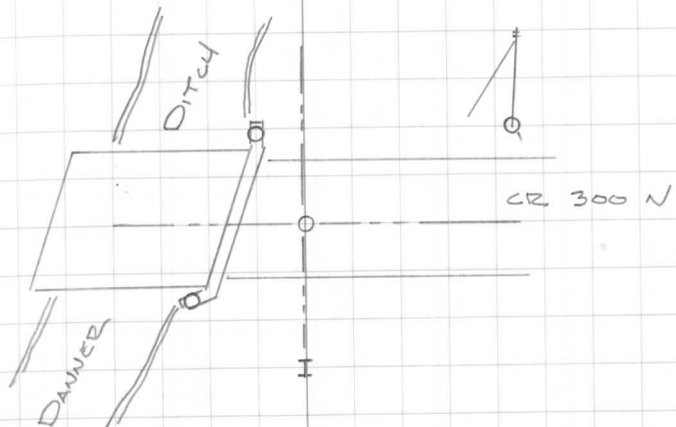
"WALKER" SURVEY DATED 7/30/97 Doc 97-10-1358

ETNA

48



SE CORNER
SECTION 26-33-4
ETNA TWP PT



FO RR SPIKE FLUSH

DESCRIPTION

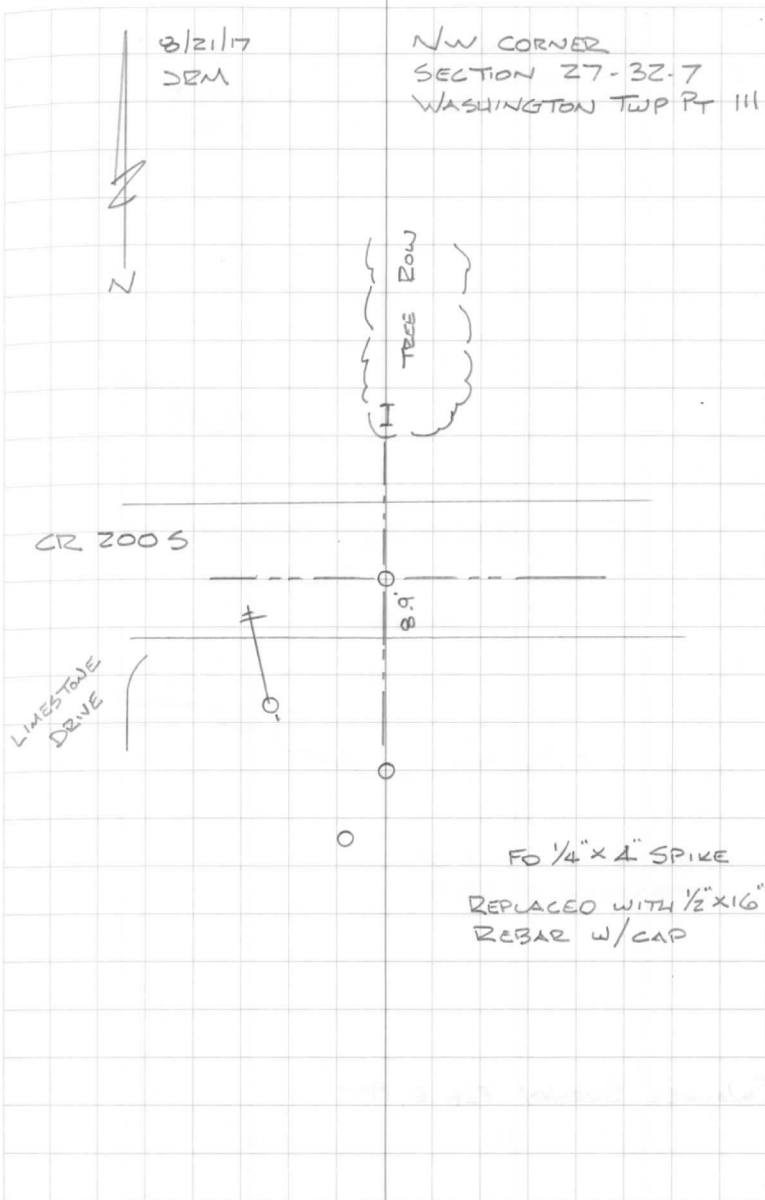
BEARING DISTANCE

| | | | |
|--|------------|-----|--------|
| NAIL IN B. CAP NIPSCO P. POLE | 622 532 | SW | 21.26' |
| ± RR RAIL FCP AT BASE | | N | 16.55' |
| FO "WALKER" CAPPED IRON | | S | 19.96' |
| FO 1" IRON PIPE (OLD T.I.E) TOP BENT 4" DEEP | | SSW | 23.24' |

"MICHEL" SURVEY 11/17/06 DOC # 200600017017

WASHINGTON

49



8/21/17
DEM

N 1/4 CORNER
SECTION 27-32-7
WASHINGTON TWP R 112

N

BEAN
FIELD

CORN FIELD

WOODED
AREA

FOA 4' x 8" I-BEAM
FCP IN CONCRETE

"WALKER" SURVEY FEB 6, 1997

DESCRIPTION

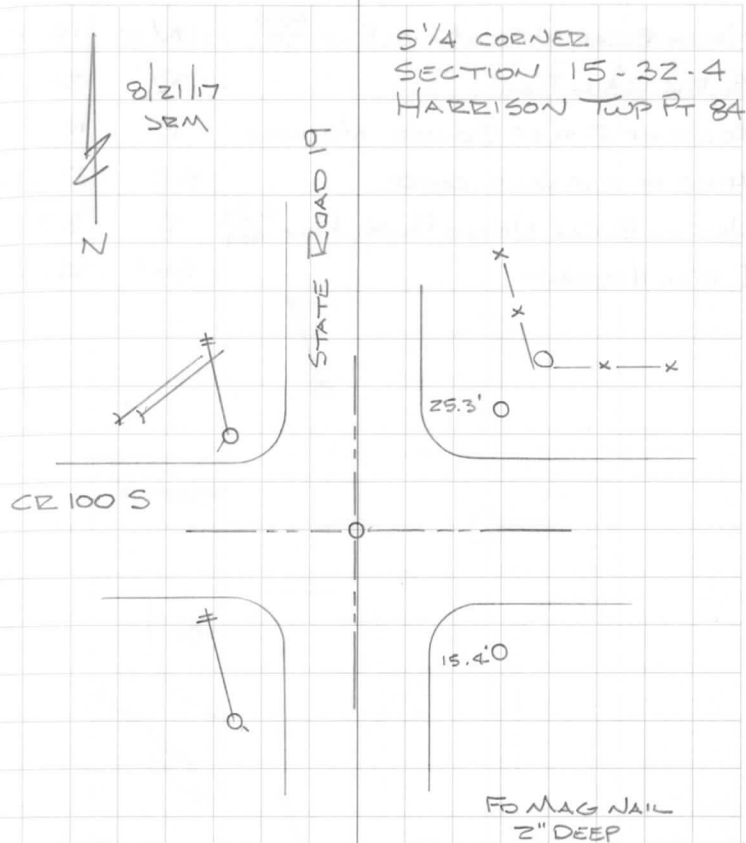
BEARING DISTANCE

| | | |
|--|----|--------|
| NAIL IN B. CAP IN POWER POLE | NW | 32.39' |
| 1/2" x 16" REBAR W/CAP 9' TO E/P CR100S | NE | 40.52' |
| 1/2" x 16" REBAR W/CAP 23.5' TO E/P CR100S | SE | 44.32' |
| NAIL IN B. CAP IN POWER POLE | SW | 51.35' |

"KIMPEL" SURVEY 4/9/2013 Doc # 2013040577
 INDOT SURVEY 12/24/1997 Doc # 98-01-0283
 SURVEY RECORD BOOK 2 (COPY) Pg 186 STONE MAY 1860

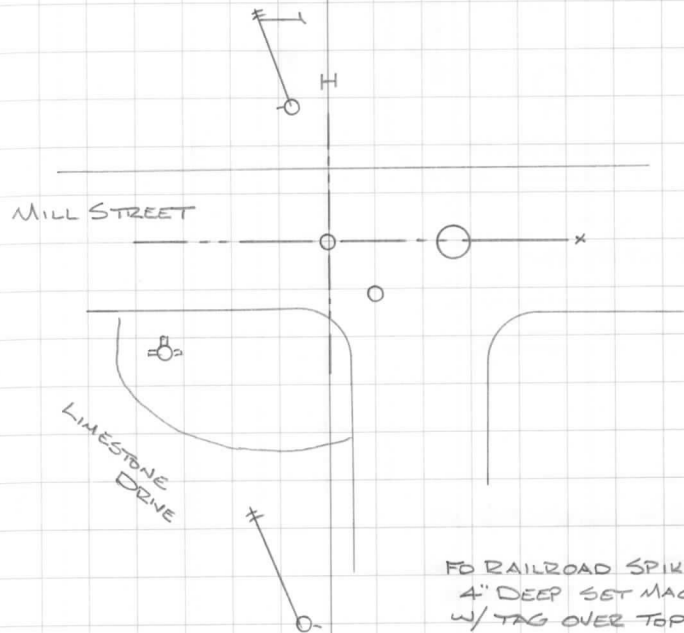
HARRISON

51



| DESCRIPTION | BEARING | DISTANCE |
|---|---------|----------|
| NAIL IN B. CAP NIPSCO POWER POLE ⁶²⁴ 952 | N | 18.45' |
| ¢ RR RAIL FCP | N | 20.16' |
| EDGE OF RIM OF SEWER MANHOLE | E | 18.45' |
| EDGE OF GAS VALVE COVER | SE | 13.53' |
| NAIL IN B. CAP NIPSCO POWER POLE ⁶²⁴ 951 | S | 83.63' |
| ¢ FIRE HYDRANT | SW | 41.60' |

WASHINGTON



FO RAILROAD SPIKE
4" DEEP SET MAGNAIL
W/ TAG OVER TOP

DESCRIPTION

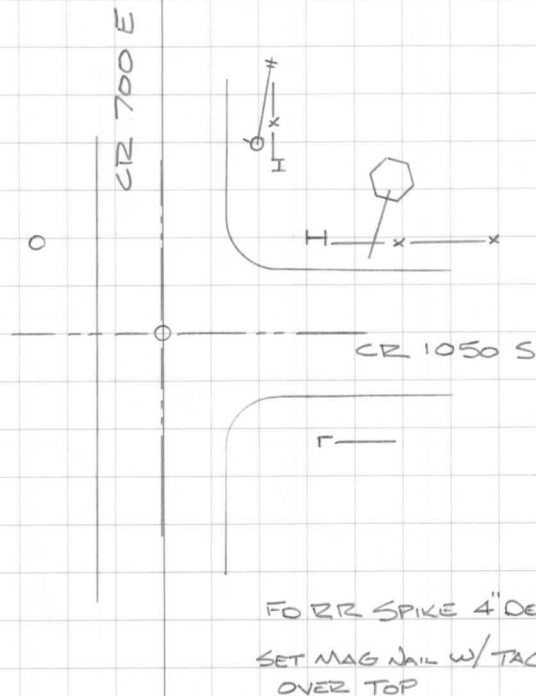
BEARING DISTANCE

| | | | |
|--------------------------------------|-------------|-----|--------|
| 1/2" x 16" REBAR W/CAP | 14.6 TO E/P | NW | 23.46' |
| FO MAG NAIL IN POWER POLE | | NE | 40.86' |
| SW CORNER AT BASE RR RAIL FCP | | ENE | 39.23' |
| SE CORNER STOP SIGN POST | | ENE | 44.22' |
| CORNER AT BASE 2 1/2" ANGLE IRON FCP | | SE | 37.36' |

"WOOLPERT" STA 120 JAN 18, 2012

JACKSON

53

8/28/17
JRMW 1/4 CORNER
SECTION 1-30-7
JACKSON TWP PT 68FO RR SPIKE 4" DEEP
SET MAG NAIL W/TAG
OVER TOP

DESCRIPTION

BEARING DISTANCE

| | | |
|---|-----|--------|
| NAIL IN B. CAP IN POWER POLE | WSW | 91.69' |
| 1/2" x 16" REBAR W/CAP 12.2' to E/P SR 19 | SE | 28.90' |
| NAIL IN B. CAP IN POWER POLE | SSW | 65.35' |
| E RR RAIL FCP LEAVING EAST | NE | 39.4' |

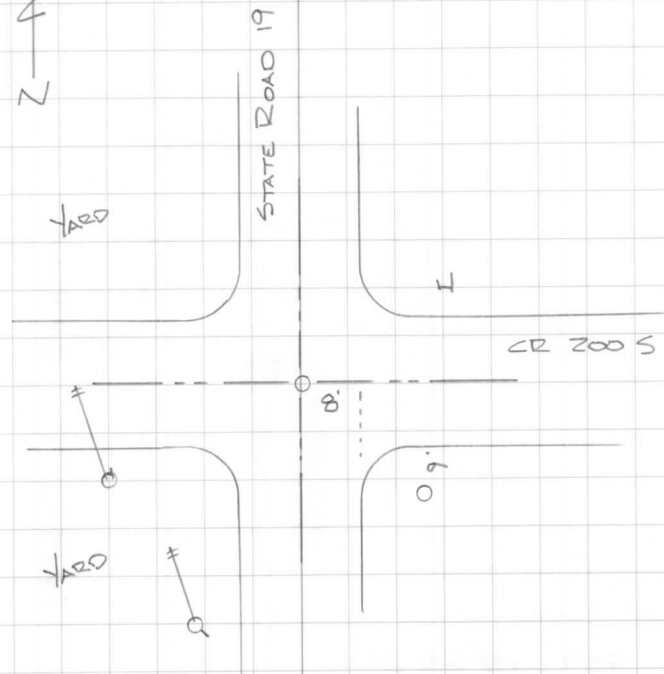
HARRISON

54

8/31/17
JRM

N

N 1/4 CORNER
SECTION 27-32-4
HARRISON TWP PT 116



FOR RR SPIKE 6" DEEP

SET MAG NAIL W/TAG
OVER TOP

"WALKER" SURVEY FEB 12, 2003 # 2003041125

DESCRIPTION

BEARING DISTANCE

E 24" DIA WALNUT TREE

SW

4.4'

E 24" DIA WALNUT TREE

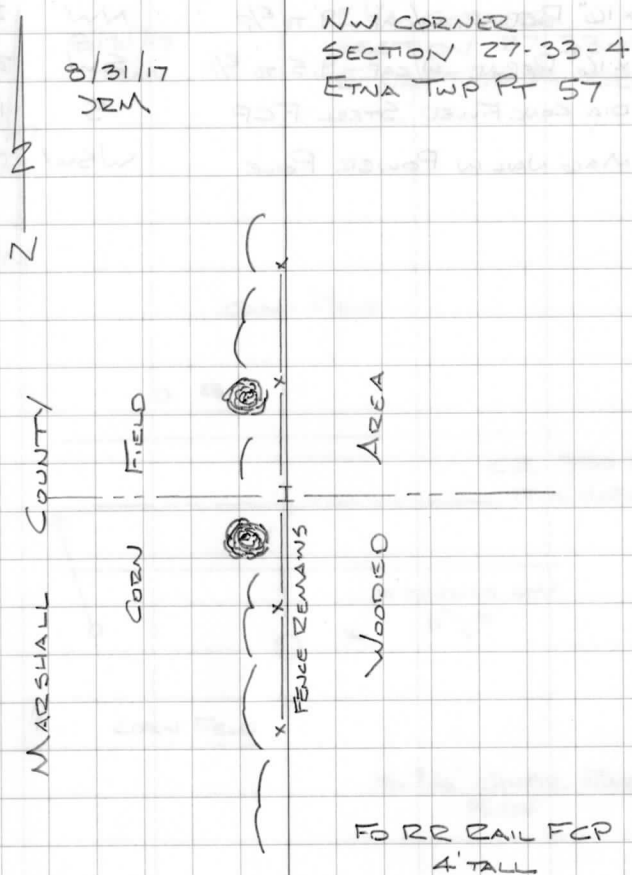
NNW

14'

"WALKER" SURVEY DATED 12/4/2007 Doc # 200800000303

ETNA

55



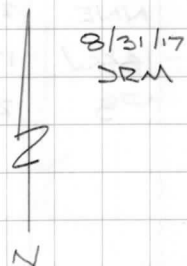
| DESCRIPTION | BEARING | DISTANCE |
|------------------------------------|---------|----------|
| 1/2" x 16" REBAR w/CAP 9' TO E/P | NW | 34.32' |
| 1/2" x 16" REBAR w/CAP 9.5' TO E/P | SW | 22.95' |
| 5" DIA CONC FILLED STEEL FCP | S | 19.84' |
| FO MAG NAIL IN POWER POLE | WSW | 70.76' |

SURVEY FIELD BOOK Z Pg 68

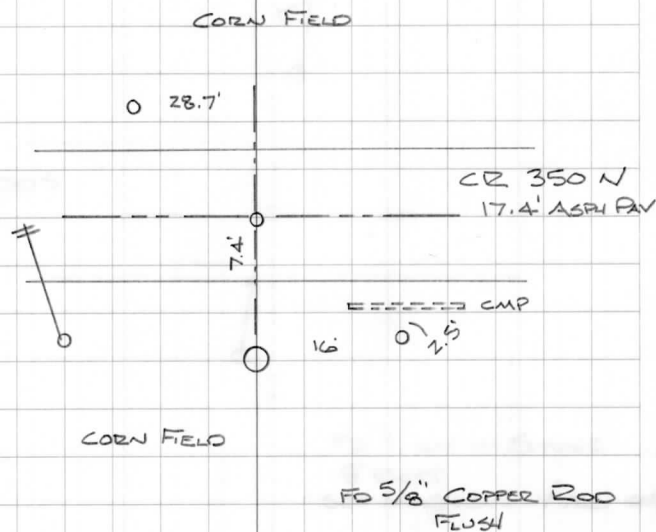
"KIMPEL" SURVEY OCT 22, 2007 Doc # 2008 000 000 12

ETNA

56



E 1/4 CORNER
SECTION 27-33-4
ETNA TWP PT 68



DESCRIPTION

BEARING DISTANCE

NAIL IN B. CAP IN ANCHOR POLE
 NAIL IN B. CAP IN POWER POLE
 & RR RAIL FCP LEAVING WEST

NNE 23.78'
 SSW 17.85'
 S 20.0'

JACKSON

57

CR 9005

N 1/4 CORNER
 SECTION 32-31-7
 JACKSON TWP PT 30

FO "x" CUT IN STONE
 8" DEEP
 SET MAG NAIL W/TAG OVER

FO PK NAIL 0.62' WEST 4" DEEP
 0.12' NORTH

SURVEY RECORD BOOK 2 COPY Pg 369 1871 - STONE

| DESCRIPTION | BEARING | DISTANCE |
|--------------------------------------|---------|----------|
| 1/2" x 16" REBAR w/CO CAP 10' TO E/P | SW | 42.77' |
| 1/2" x 16" REBAR w/CO CAP 14' TO E/P | SE | 34.73' |

| | | | | |
|----------|--------|--------------|---|------------|
| "KIMPEL" | SURVEY | FEB 13, 2013 | # | 2013040577 |
|----------|--------|--------------|---|------------|

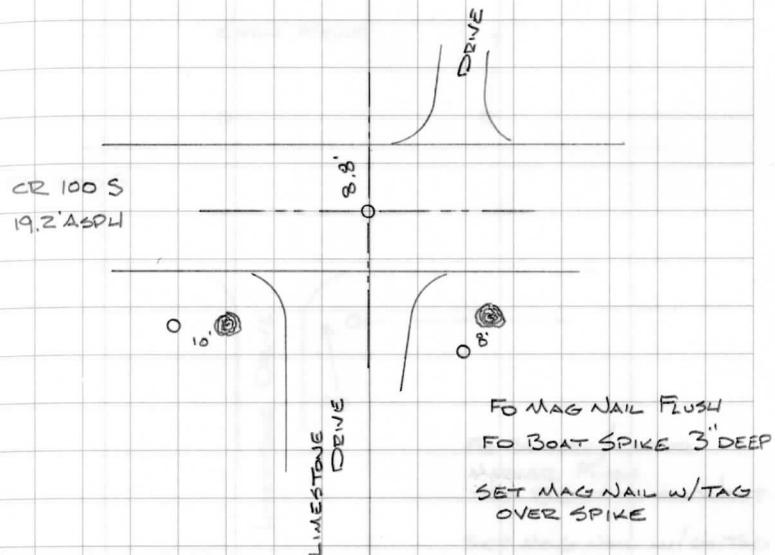
HARRISON

58

9/6/17

SEM

NE CORNER
SECTION 22-32-4
HARRISON TWP PT 85



DESCRIPTION

BEARING DISTANCE

 $\frac{1}{2}$ " x 16" REBAR w/CAP 9.2' to E/P

NW

34.96'

NAIL IN B. CAP IN POWER POLE

NE

47.39'

E $2\frac{1}{2}$ " DIA STEEL FCP AT TOP

S

20.03'

NAIL IN B. CAP REMC POLE #5338

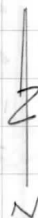
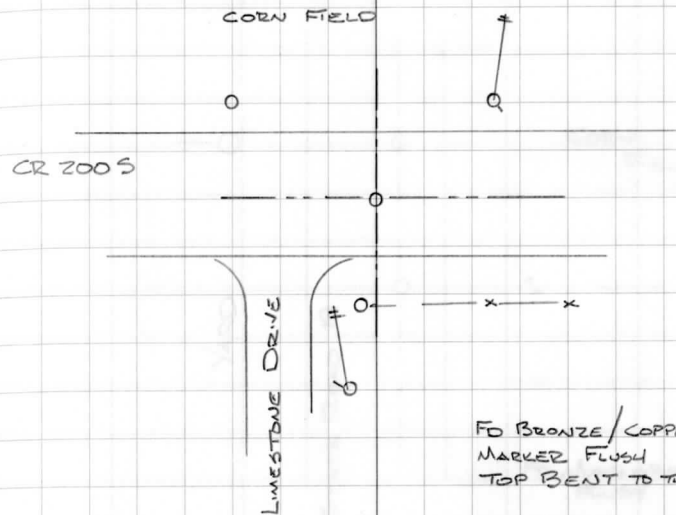
S

38.39'

OLD TIE - RD I POST 20' S

HARRISON

59

9/6/17
JRMSE CORNER
SECTION 22-32-4
HARRISON TWP PT 117FO BRONZE/COPPER
MARKER FLUSH
TOP BENT TO THE WEST
SET MAG NAIL w/CO TAG
OVER BASE OF ROD

DESCRIPTION

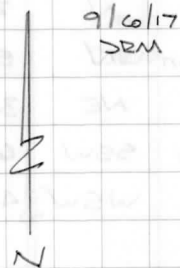
BEARING DISTANCE

| | | |
|--------------------------------|----|--------|
| ± 4" DIA CONC FILLED STEEL FCP | NW | 47.90' |
| FO MAG NAIL FLUSH | N | 41.8' |
| ± RR RAIL FCP | E | 16.8' |
| ± STATE ROAD 19 | W | 2.2' |

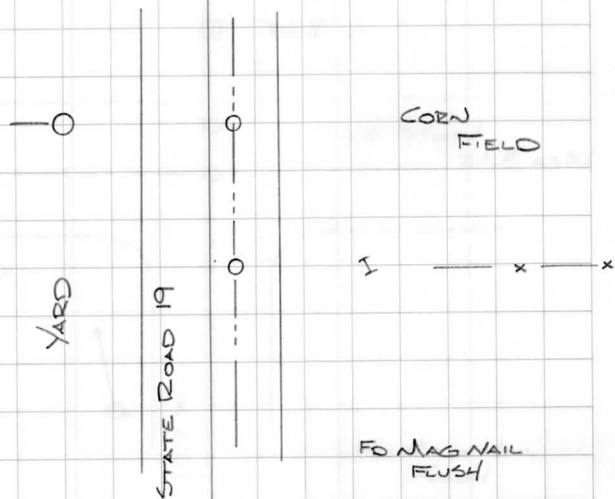
SURVEY RECORD BOOK 2(COPY) P. 351 STONE MAY 1869
 "LESSIG" SURVEY NOV 7, 1997 #98-08-0631
 "MICHEL" SURVEY OCT 20, 2005 #200600000705

HARRISON

60



CENTER OF SECTION
 SECTION 27-32-4
 HARRISON TWP PT 145



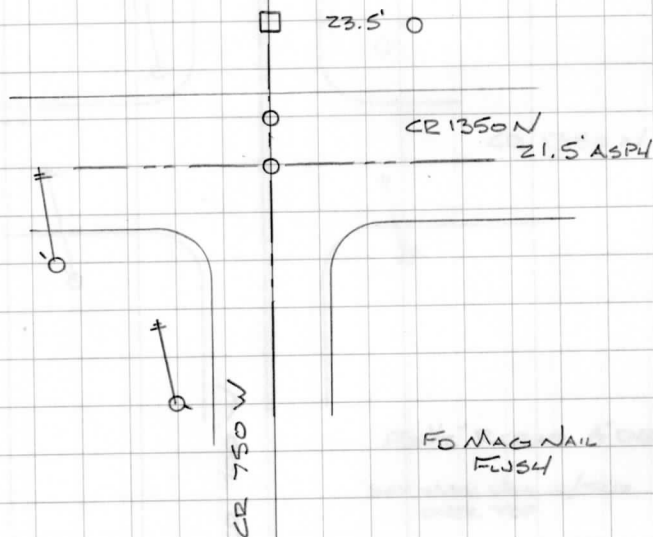
| DESCRIPTION | BEARING | DISTANCE |
|--|---------|----------|
| WOOD RR TIE FCP | N | 23.3' |
| RR SPIKE 4.7' FROM EDGE OF PAVEMENT | N | 5.80' |
| 1/2" X 16" REBAR W/CAP 14' TO E/P | NE | 34.28' |
| FD NAIL IN B. CAP IN NIPSCO PP 688/187 | SSW | 61.98' |
| FD NAIL IN B. CAP IN NIPSCO PP 689/503 | WSW | 47.26' |

"HUFFMAN" SURVEY JUNE 2010 Doc # 2010080660

JEFFERSON

9/11/17
JRM
N

CENTER OF SECTION
SECTION 6-34.5
JEFFERSON TWP PT 25



DESCRIPTION

BEARING DISTANCE

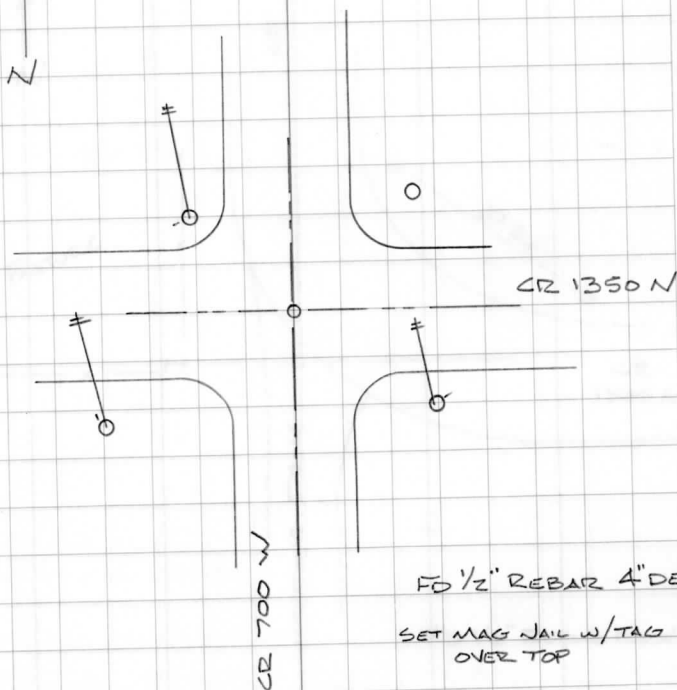
| | | | |
|--------------------------|----------------------|----|--------|
| NAIL IN B. CAP NIPSCO PP | ¹⁰⁶⁴ /557 | NW | 32.52' |
| 1/2" x 16" REBAR W/CAP | 17' to E/P 700W | NE | 50.36' |
| NAIL IN B. CAP NIPSCO PP | ¹⁰⁶⁴ /475 | SE | 45.22' |
| NAIL IN B. CAP NIPSCO PP | ⁶⁸² /446 | SW | 53.57' |

JEFFERSON

62

9/11/17
JRM
N

E 1/4 CORNER
SECTION 6-34-5
JEFFERSON TWP PT 24



FO 1/2" REBAR 4" DEEP

SET MAG NAIL W/TAG
OVER TOP

DESCRIPTION

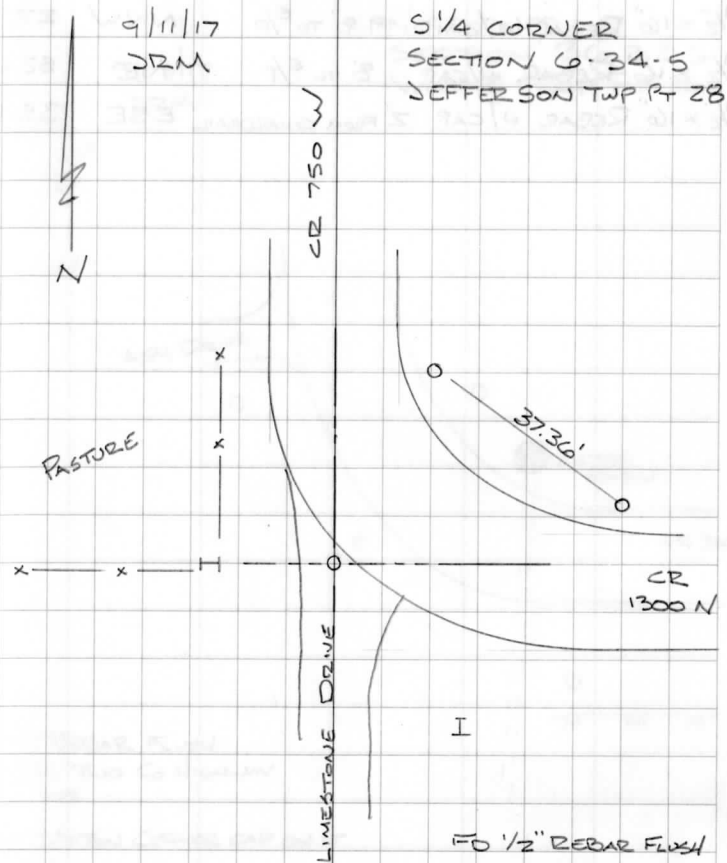
BEARING DISTANCE

| | | |
|------------------------------------|-----|--------|
| 1/2" x 16" REBAR w/CAP 7.2' TO E/P | NNE | 42.11' |
| 1/2" x 16" REBAR w/CAP 4' TO E/P | ENE | 43.30' |
| ± RR RAIL FCP LEANING EAST | SE | 23.8' |
| ± RR RAIL FCP | W | 20.3' |

"KIMPEL" SURVEY AUGUST 2004 Dec # 200500000773

JEFFERSON

63



DESCRIPTION

BEARING DISTANCE

| | | |
|--|-----|--------|
| 1/2" x 16" REBAR W/CAP 9.8' TO E/P | NNW | 27.32' |
| 1/2" x 16" REBAR W/CAP 8' TO E/P | NE | 52.67' |
| 1/2" x 16" REBAR W/CAP 2' FROM GUARDRAIL | ESE | 35.83' |

J.E. NOEL'S SUBDIVISION OCT 1987 RAT BOOK 8 Pg 106

WAYNE

64

9/15/17
DEMNE CORNER
SECTION 36.32-5
WAYNE TWP PT 164

ASPH DRIVE

CATCH
BASIN

CR 300S

FD 1/2" REBAR FLUSH
UNDER TWO CO HIGHWAY
SIGNS

SET SECTION CORNER CAP ON IT

| DESCRIPTION | BEARING | DISTANCE |
|---|---------|----------|
| FOUR NAIL IN ROAD FLUSH | W | 73.07' |
| NAIL IN B. CAP IN POWER POLE | WNW | 64.97' |
| 4 RR RAIL FENCE POST FOR GATE | NW | 40.2' |
| 1/2" x 16" REBAR W/ CAP 1.0' FROM FENCE | NE | 19.23' |
| 4 RR RAIL FCP | SSW | 20.75' |

| | |
|----------------|-------|
| FENCE TO FENCE | 37.8' |
|----------------|-------|

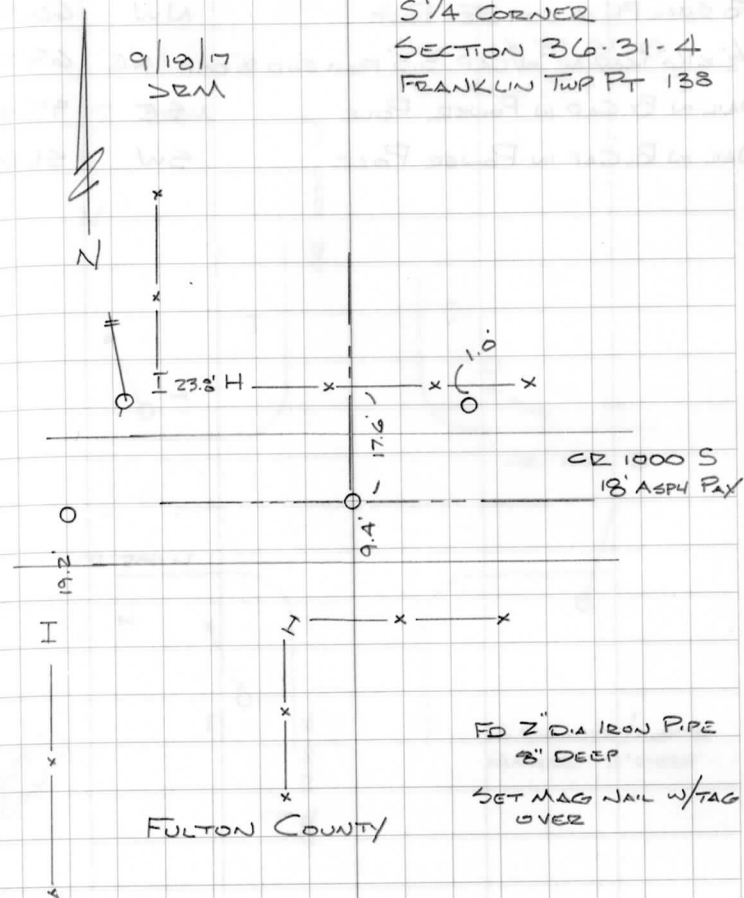
(WELL POINT)
SURVEY RECORD BOOK 4 Pg 275, SET IRON PIPE OCT 1912

FRANKLIN

66

S 1/4 CORNER
SECTION 36-31-4
FRANKLIN TWP RT 138

9/18/17
SEM



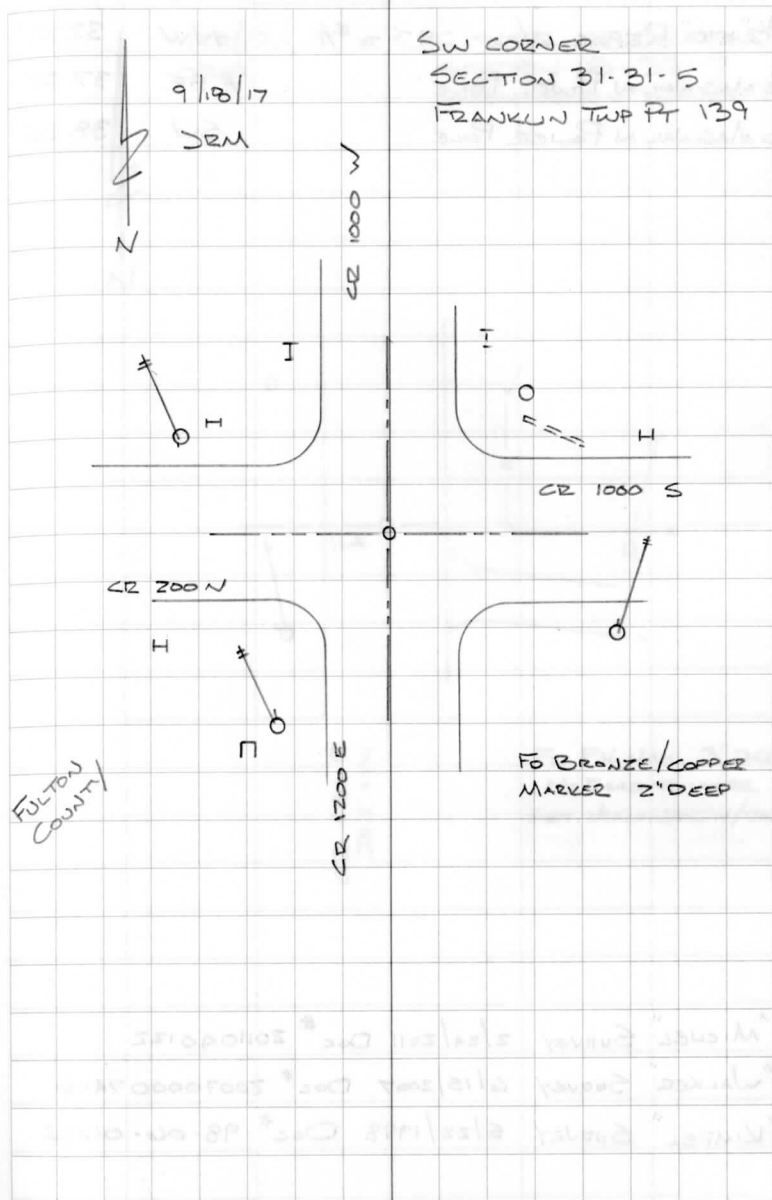
| DESCRIPTION | BEARING | DISTANCE |
|--|---------|----------|
| FO SMALL PK NAIL IN TEL POLE | NW | 66.52' |
| 1/2" x 16" REBAR W/CAP 5.5' FROM END 8" CMP NE | NE | 63.21' |
| NAIL IN B. CAP IN POWER POLE | SE | 97.40' |
| NAIL IN B. CAP IN POWER POLE | SW | 51.26' |

FIELD BOOK 2 Pg 184
FULTON Co SECTION 1 T31N, R4E TIE'S CHECKED

SURVEY FIELD BOOK 8 Pg 13 - OLD TIE'S CHECKED

FRANKLIN

67



| DESCRIPTION | | BEARING | DISTANCE |
|------------------------------------|--|---------|----------|
| 1/2" x 16" REBAR W/CAP 9.3' TO E/P | | NW | 32.32' |
| FO MAG NAIL IN POWER POLE | | ESE | 37.50' |
| FO MAG NAIL IN POWER POLE | | SW | 38.35' |

"MICHEL" SURVEY 2/24/2011 Doc # 2011040122
 "WALKER" SURVEY 6/15/2007 Doc # 200700007466
 "KIMPEL" SURVEY 5/22/1998 Doc # 98-06-0632

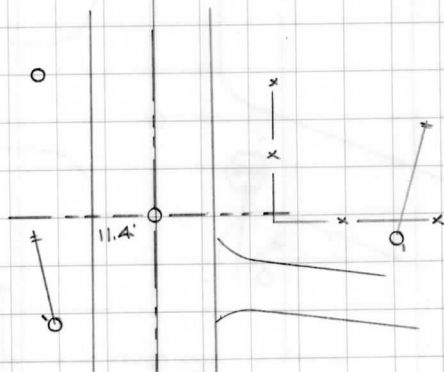
WASHINGTON

68



9/20/17
JRM

CENTER OF SECTION
SECTION 18-32-7
WASHINGTON TWP RT 77



CD 450 E
20.2' ASPH

FO PK NAIL 3" DEEP
NO READING UNDER
SET MAG NAIL W/TAG

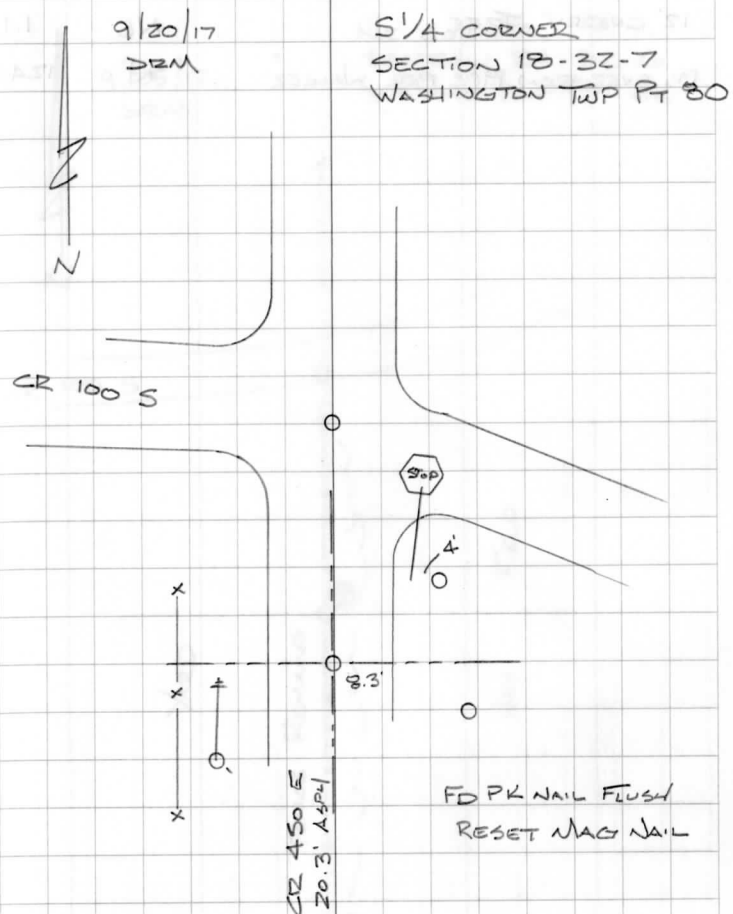
DESCRIPTION

BEARING DISTANCE

| | | |
|------------------------------------|-----|---------|
| 1/2" x 16" REBAR W/CAP 9' TO E/P | NE | 38.33' |
| FO PK NAIL 3" DEEP IN INTERSECTION | N | 112.55' |
| 1/2" x 16" REBAR W/CAP 12' TO E/P | ESE | 21.35' |
| NAIL IN B. CAP IN POWER POLE | SW | 30.59' |
| FO PK 3" DEEP | W | 1.81' |

"WALKER" SURVEY APRIL 9 2013 Doc # 2013091097

WASHINGTON



DESCRIPTION

BEARING DISTANCE

12" CHERRY TREE

NE

1.1'

PK OVER IRON PIPE PER "WALKER"

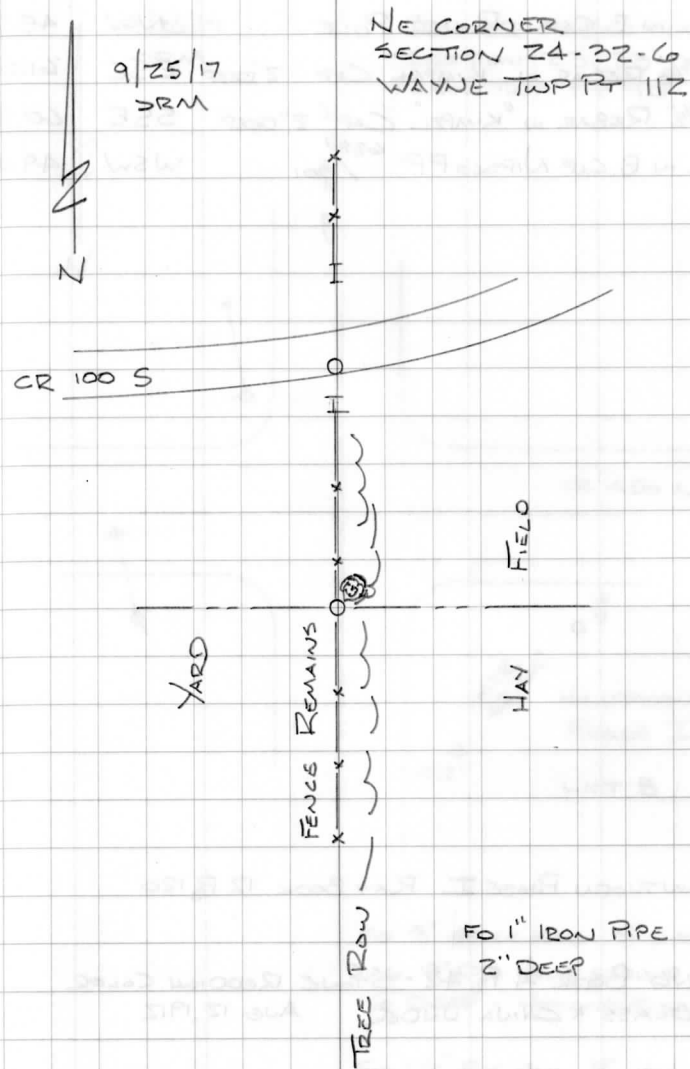
N

124.9'

"WALKER" SURVEY APRIL 27 2007 DOC # 200700007463

WAYNE

70



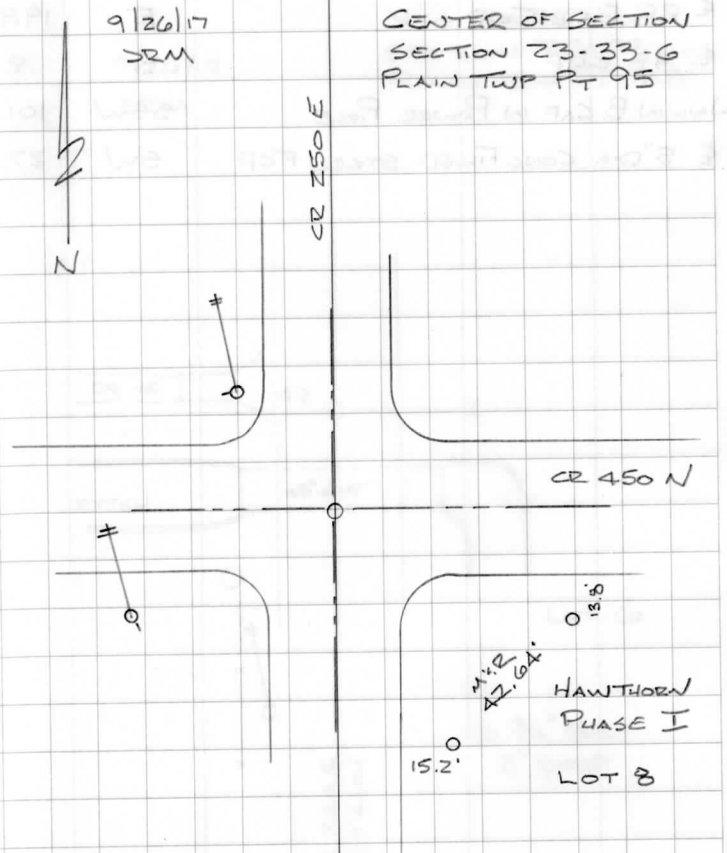
| DESCRIPTION | BEARING | DISTANCE |
|--------------------------------------|---------|----------|
| NAIL IN B. CAP IN POWER POLE | NW | 45.22' |
| FO 5/8" REBAR W "KIMPEL" CAP 2" DEEP | ESE | 61.51' |
| FO 5/8" REBAR W "KIMPEL" CAP 2" DEEP | SSE | 60.86' |
| NAIL IN B. CAP NIPSCO PP 638/701 | WSW | 49.08' |

HAWTHORN PHASE I PLAT BOOK 12 P. 120

SURVEY BOOK A P. 42 - STONE REDDISH COLOR
GLASS & CHINA UNDER AUG 12, 1912

PLAIN

71



FO 3" SPIKE NAIL 5" DEEP
DUG 12" DIA HOLE AROUND IT
16" DEEP - NOTHING ELSE FO

FO 1 1/2" PK NAIL FLUSH
0.8' E x 0.52' N

| DESCRIPTION | BEARING | DISTANCE |
|--------------------------------|---------|----------|
| ± RR RAIL FCP | E | 19.95' |
| ± 48" CMP | S | 8' |
| NAIL IN B. CAP IN POWER POLE | SSW | 101.70' |
| ± 5" DIA CONC FILLED STEEL FCP | SW | 27.2' |

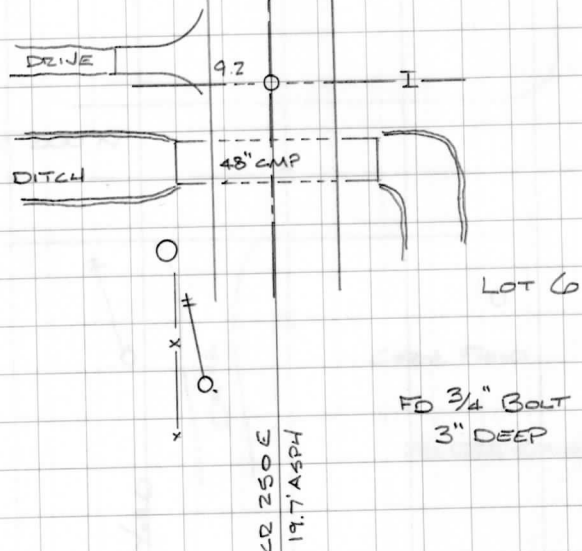
PLAIN

72

N
Z

9/26/17
JRM

N 1/4 CORNER
SECTION 23-33-6
PLAIN TWP RT 88



"BROWER" SURVEY/ MAY 31 1973 SURVEY F.B. 7 P. 20
 "KIMPEL" SURVEY OGC #96-12-0771
 BROOKFIELD ESTATES SD BOOK 9 P. 27
 JULY 5, 1974

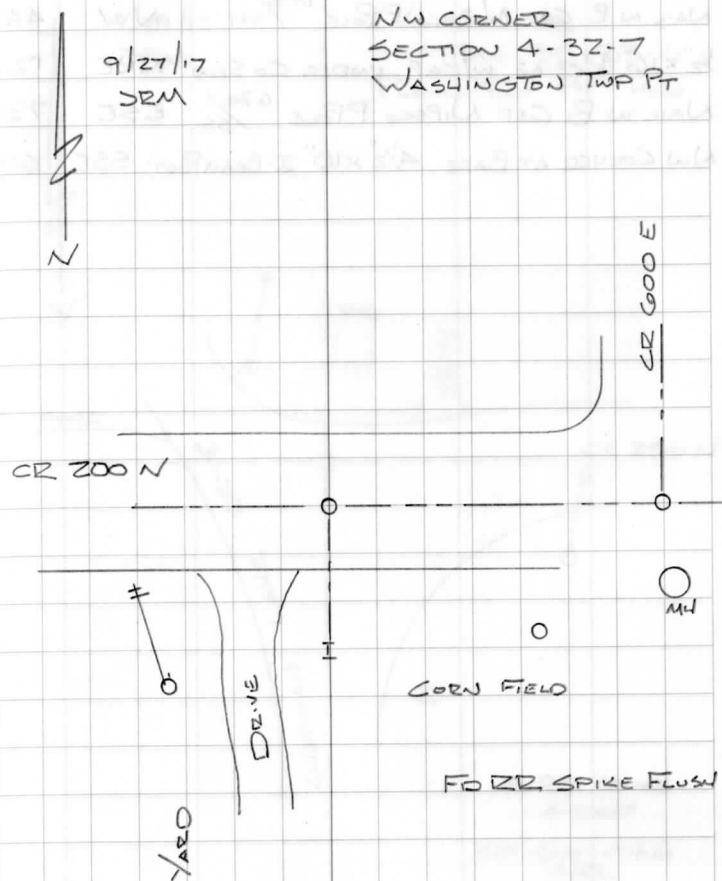
DESCRIPTION

BEARING DISTANCE

| | | |
|--|----|--------|
| NAIL IN B CAP IN POWER POLE | SW | 30.81' |
| FO RR SPIKE (SE CORNER SEC 32-33-7) | E | 68.77' |
| 1/2" x 16" REBAR W/CAP 11.7' $\frac{5}{8}$ " | SE | 44.90' |
| 4 RR RAIL FCP | S | 21.2' |

WASHINGTON

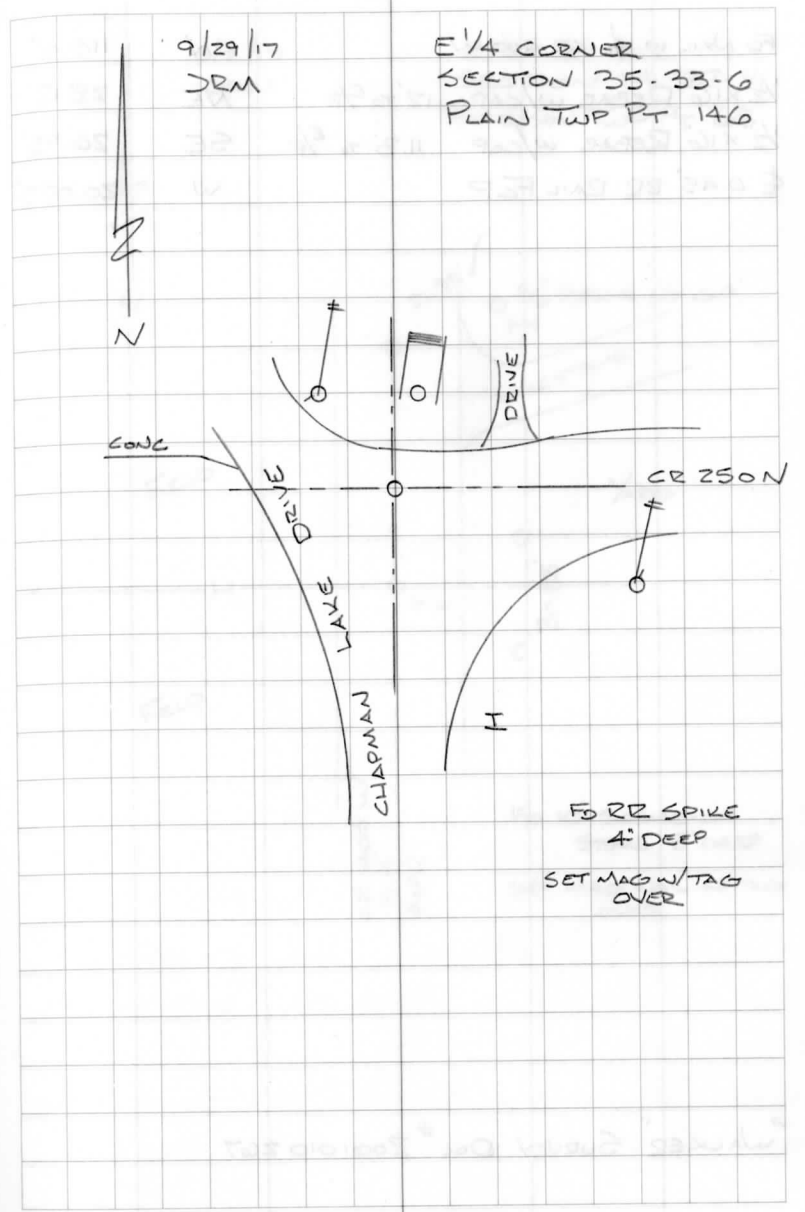
73



SE CORNER SECTION 32-33-7 FIELD BOOK 2 Pg 65
"KIMPEL" SURVEY 3/21/2006 DOC # 200600003474

| DESCRIPTION | BEARING | DISTANCE |
|--|---------|----------|
| NAIL IN B. CAP NIPSCO P POLE ^{1070/941} | NW | 44.56' |
| 1/2" X 16" REBAR W/CAP UNDER CO SIGN | NNE | 17.69' |
| NAIL IN B. CAP NIPSCO P POLE ^{630/550} | ESE | 73.09' |
| NW CORNER AT BASE 4 1/2" X 10" I-BEAM POST | SSE | 67.4' |

PLAIN



HIGHLANDS 1ST ADD PLAT BOOK 3 P. 279 6/8/1904

DESCRIPTION

BEARING DISTANCE

FO NAIL IN \pm CR 400 W

N

110.5'

 $\frac{1}{2}$ " x 16" REBAR W/CAP 12' TO E/P

NE

28.12'

 $\frac{1}{2}$ " x 16" REBAR W/CAP 11.3' TO E/P

SE

26.73'

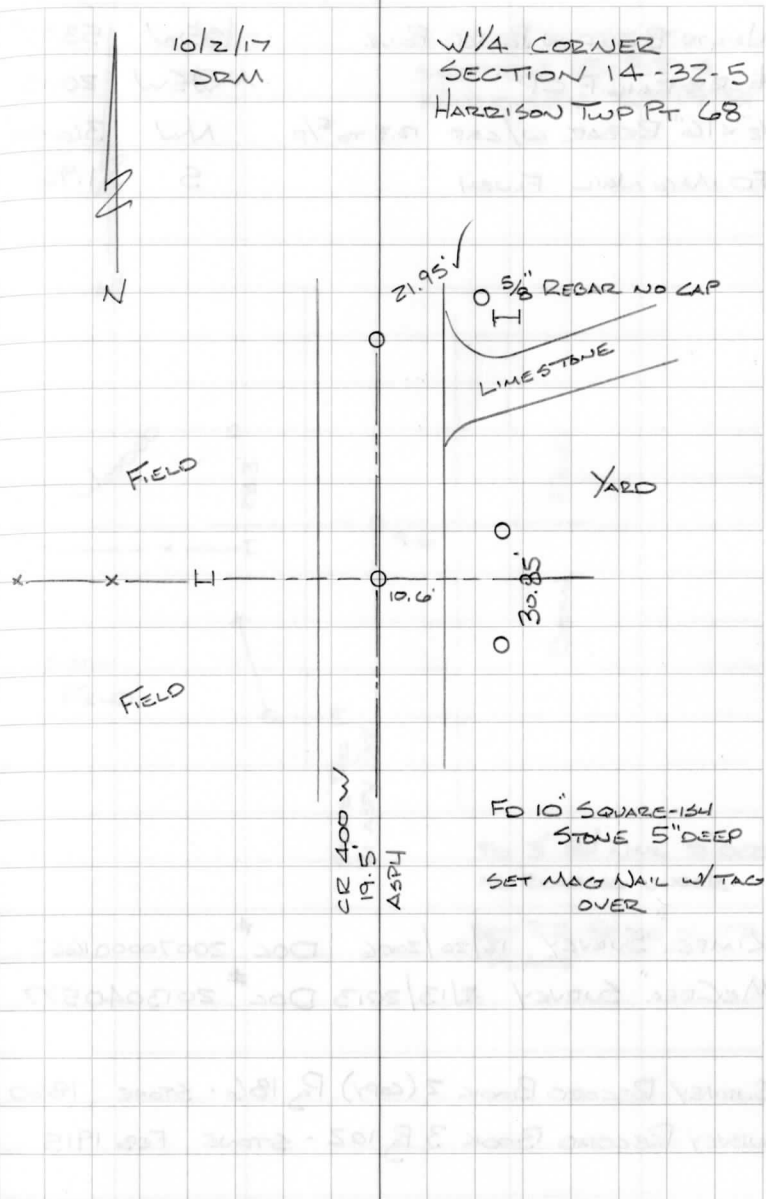
 \pm 0.45' RR RAIL FLP

W

20.075'

HARRISON

75



"WALKER" SURVEY Doc # Z001010267

DESCRIPTION

BEARING DISTANCE

| | | |
|------------------------------------|-----|--------|
| NAIL IN B. CAP IN POWER POLE | SSW | 53.77' |
| E RR RAIL FCP | WSW | 20.15' |
| 1/2" x 16" REBAR W/CAP 13.3 TO E/P | NW | 36.46' |
| FO MAG NAIL FLUSH | S | 1.96' |

"KIMPEL" SURVEY 12/20/2006 DOC # 200700001662
 "MCCREA" SURVEY 2/13/2013 DOC # 2013040577

SURVEY RECORD BOOK 2 (COPY) Pg 186 - STONE 1860

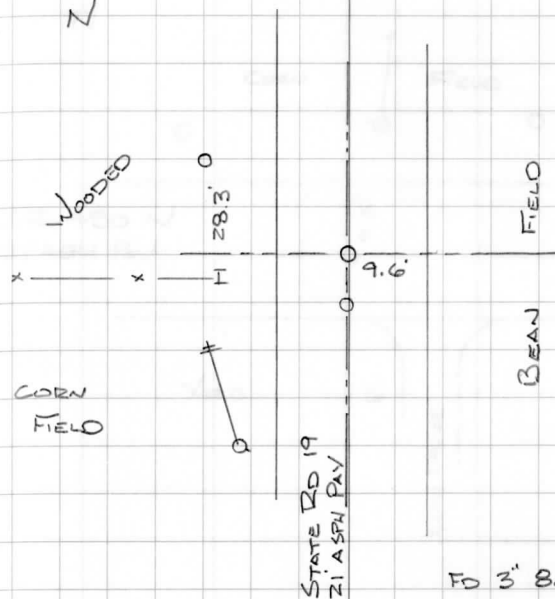
SURVEY RECORD BOOK 3 Pg 102 - STONE FEB 1915

HARRISON

76

10/4/17
JRM

CENTER OF SECTION
SECTION 15-32-4
HARRISON TWP PT 81



FO 3" 8d NAIL 5" DEEP
NO READING UNDER

SET RR SPIKE IN ITS
PLACE

DESCRIPTION

BEARING DISTANCE

 $\frac{1}{2} \times 16$ REBAR W/CAP S.S. TO E/P

NW 26.66'

NAIL IN B. CAP IN POWER POLE

N 16.08'

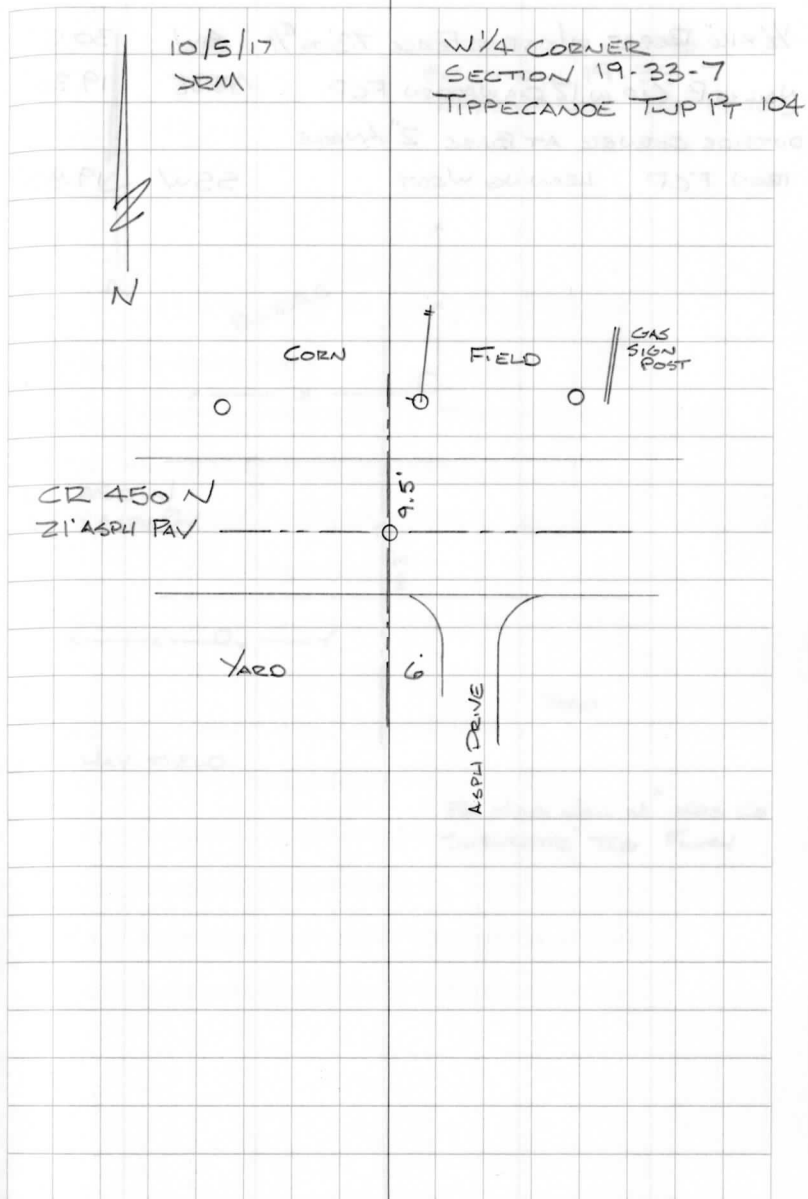
 $\frac{1}{2} \times 16$ REBAR W/CAP 7' TO E/P

NE 38.31'

REBARS 56.6' APART

TIPPECANOE

77



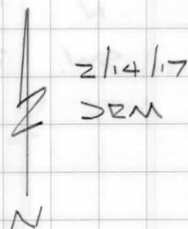
DESCRIPTION

BEARING DISTANCE

| | | |
|------------------------------------|-----|---------|
| NAIL IN TAG IN METER POLE | NE | 61.41' |
| FO PK NAIL IN POWER POLE | ENE | 110.37' |
| 1/2" REBAR W/CAP 9.5' TO E/P SR 19 | SE | 54.10' |
| FO MAG NAIL IN POWER POLE | SSW | 54.34' |
| FO MAG NAIL IN POWER POLE | WSW | 106.96' |

FRANKLIN

4



SE CORNER
SECTION 23-31-4
FRANKLIN TWP PT 93

