

Property of KOSCIUSKO COUNTY
SURVEYORS OFFICE
Address 100 W CENTER ST
COURTHOUSE
Telephone WARSAW, IN 46580

SECTION CORNER FIELD BOOK 18
INDEX

STARTED OCT 7, 2019

<u>LAKE S¹/₄ CORNER SECTION</u>	<u>7-30-6</u>	<u>1</u>
<u>LAKE SW CORNER SECTION</u>	<u>7-30-6</u>	<u>2</u>
<u>LAKE W¹/₄ CORNER SECTION</u>	<u>7-30-6</u>	<u>3</u>
<u>LAKE S¹/₄ CORNER SECTION</u>	<u>9-30-6</u>	<u>4</u>
<u>LAKE SE CORNER SECTION</u>	<u>9-30-6</u>	<u>5</u>
<u>LAKE E¹/₄ CORNER SECTION</u>	<u>10-30-6</u>	<u>6</u>
<u>LAKE SW CORNER SECTION</u>	<u>11-30-6</u>	<u>7</u>
<u>LAKE S¹/₄ CORNER SECTION</u>	<u>10-30-6</u>	<u>8</u>

This Book is manufactured using a paper made from wood-free materials and is acid-free and archive safe.

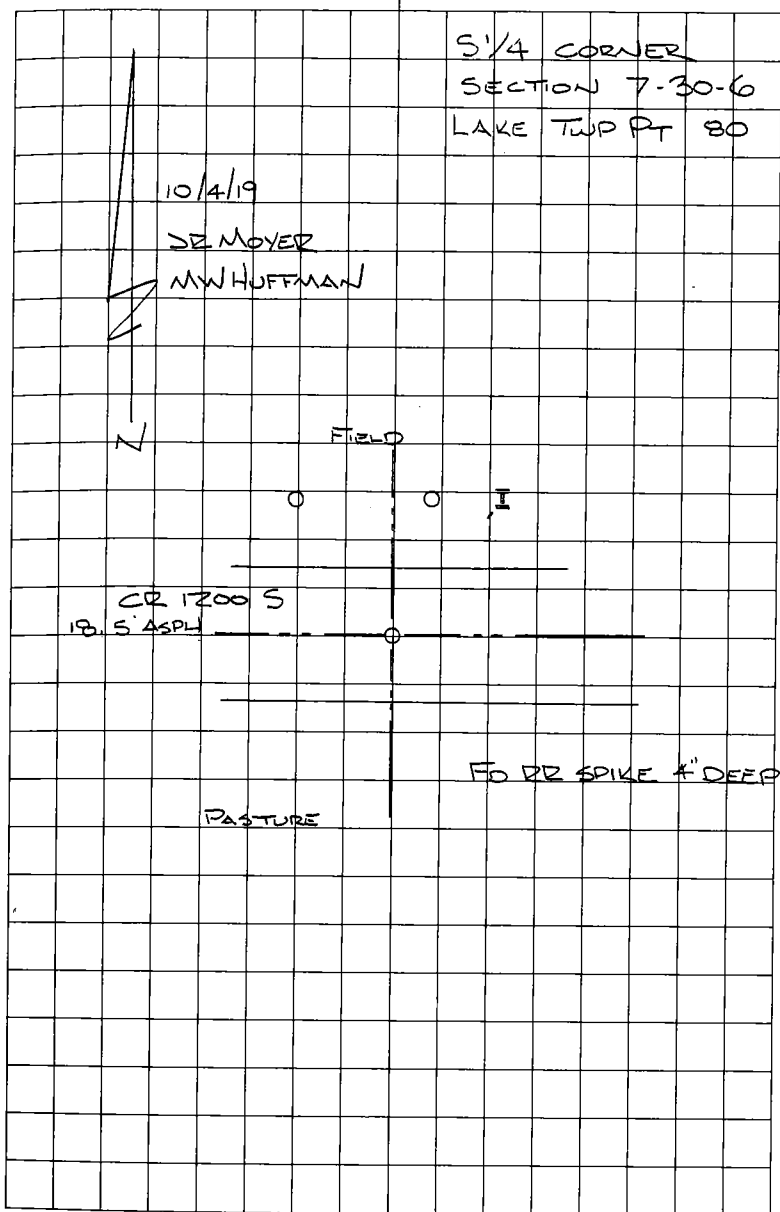
815260



$\frac{1}{2}$ " x 24" REBAR w/CAP 7.4' TO E/P	NW	32.16'
$\frac{1}{2}$ " x 24" REBAR w/CAP 10.8' TO E/P	NNE	20.88'
NEAREST EDGE RR RAIL FCP	NE	28.42'

WALKER SURVEY MARCH 3 1993 # 93-04-0970

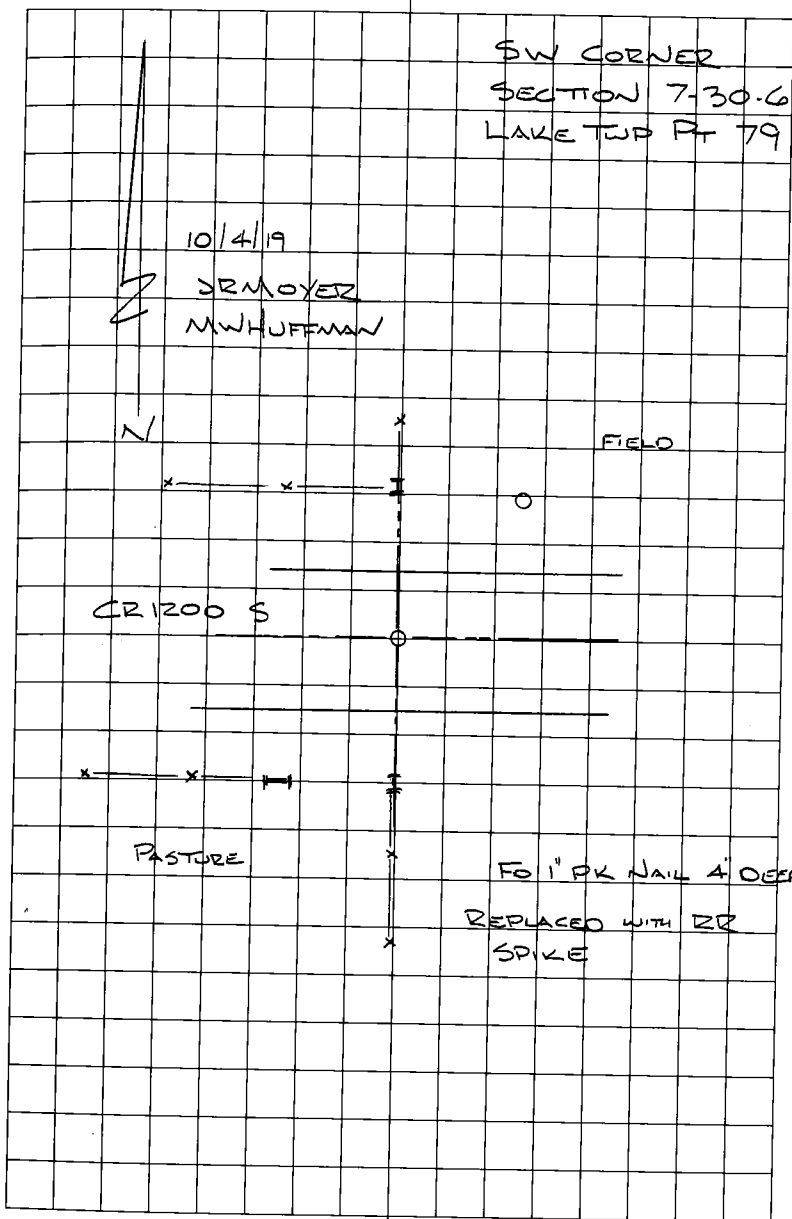
LAKE 200



S FACE RR RAIL FCP	N	18.25'
1/2" x 24" REBAR w/CAP	NE	22.20'
N FACE RR RAIL FCP	S	18.3'
NEAREST EDGE RR RAIL FCP	SW	22.87'

LAKE 200

2



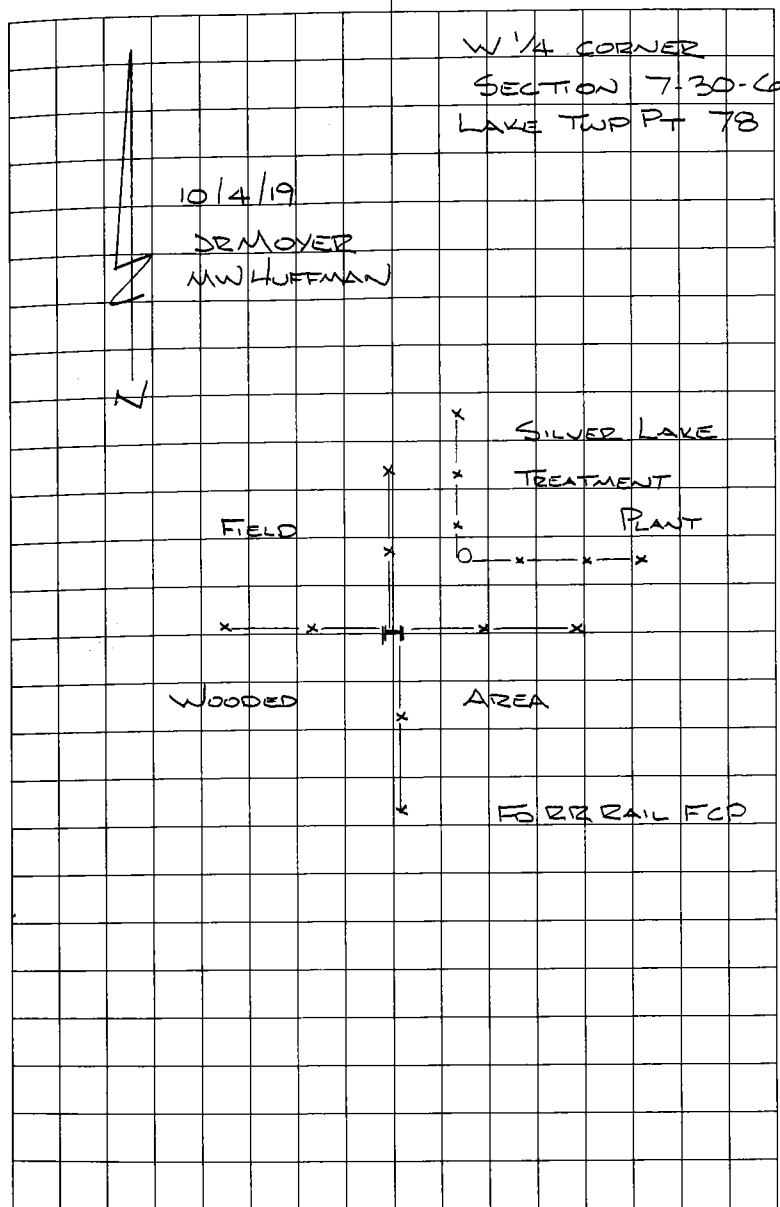
3" DIA STEEL FCP

NE 9.6'

"WALKER" SURVEY APRIL 27 1998 # 98-06-1863

LAKE 200

3

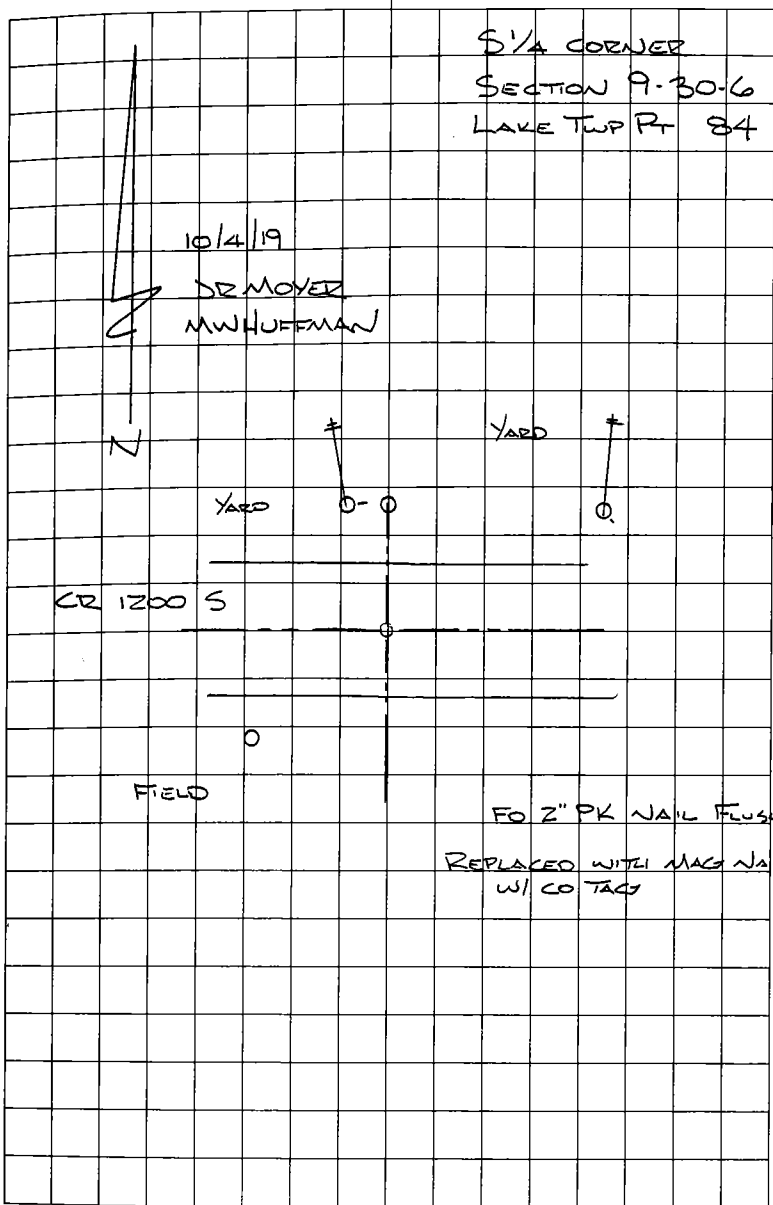


NAIL IN B. CAP POWER POLE	NNW	20.40'
4" DIA STEEL FCP CUT OFF FLUSH	N	16.7'
NAIL IN B. CAP POWER POLE	NE	56.00'
1/2" x 24" REBAR W/CAP 8.1 TO E/P	SW	32.32'

'WALKER' SURVEY APRIL 9 1998 #98-07-0483

LAKE 202

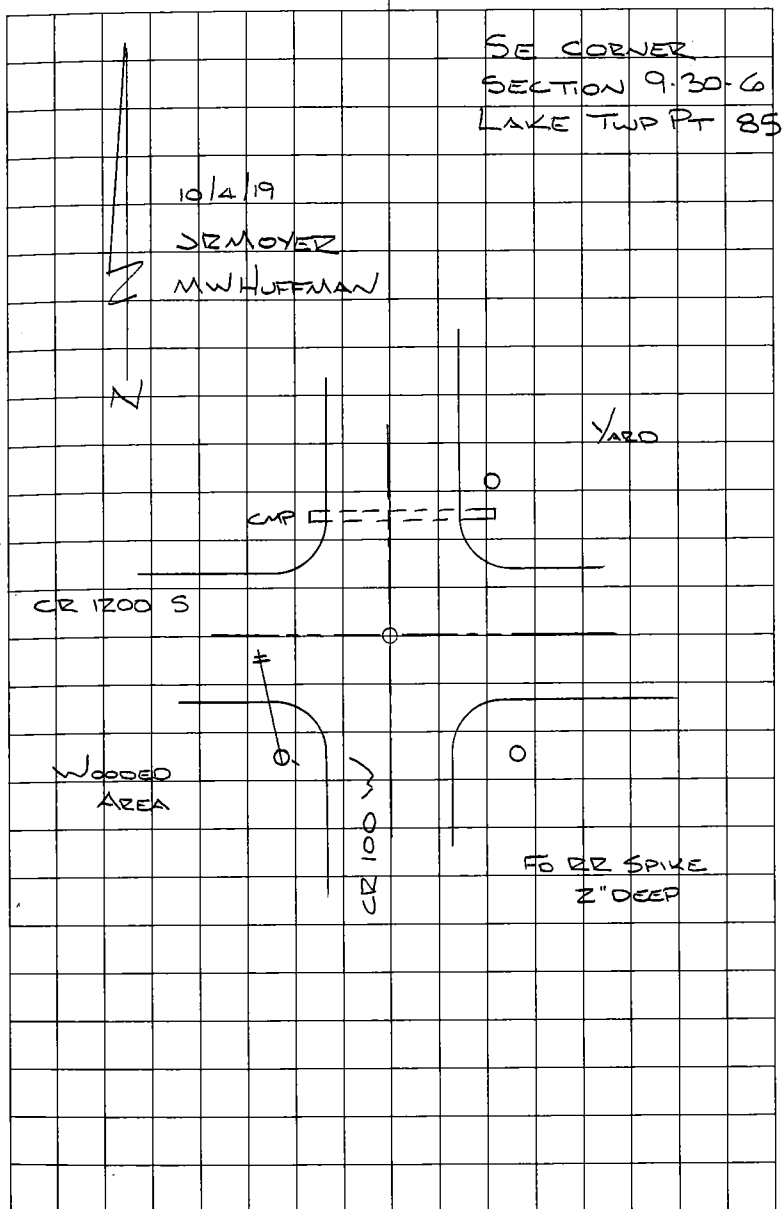
4



1/2" x 24" REBAR W/CAP	NE	57.52
1/2" x 24" REBAR W/CAP	SE	59.92'
NAIL IN B. CAP POWER POLE	SW	49.56'

LAKE 202

5

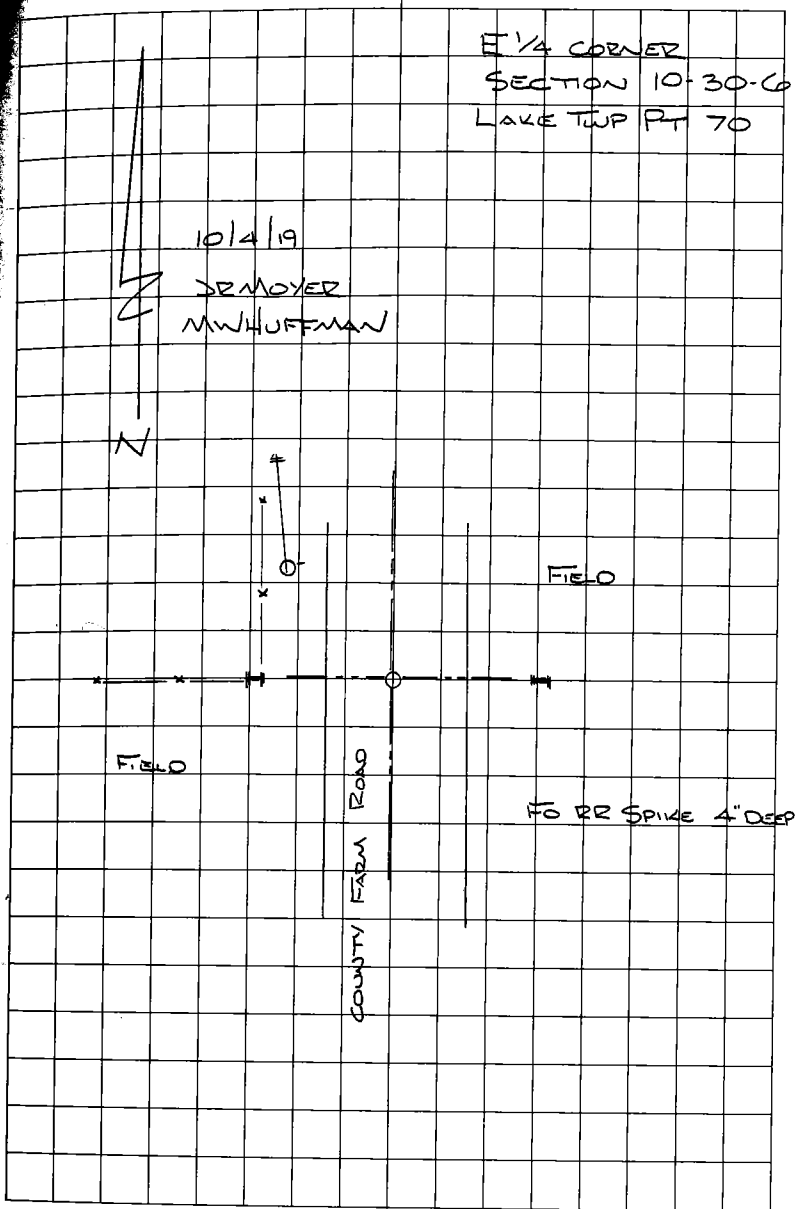


E FACE RR RAIL FCP	W	19.60'
NAIL IN BCAP POWER POLE	NW	48.77'
W FACE RR RAIL FCP	E	20.1'

SURVEY FIELD BOOK 7 Pg 57 JUNE 27 1979 CMB

LAKE 203

6

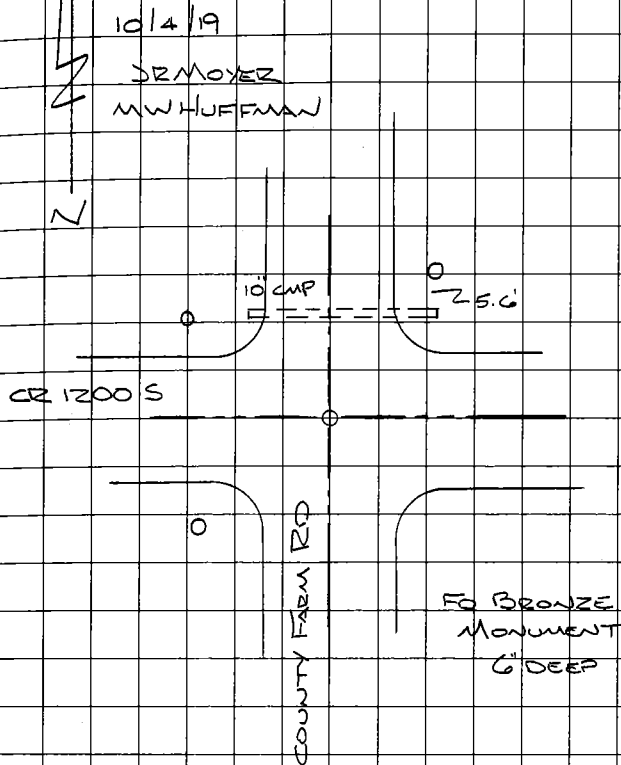


1/2" x 24" REBAR w/CAP	NW	43.93'
1/2" x 24" REBAR w/CAP	NE	36.22'
1/2" x 24" REBAR w/CAP	SW	45.53'

LAKE 204

7

SW CORNER
SECTION 11-30-6
LAKE TWP PT 87



WARRANTY DEED # 2018081478

1/2" x 24" REBAR w/CAP 4' TO E/P	SW	44.94'
N FACE RR RAIL FCP "1937"	S	20.90'
1/2" x 24" REBAR w/CAP 11.1' TO E/P	SE	29.60'

LAKE 203

8

S 1/4 CORNER
SECTION 10-30-6
LAKE TWP PT 86

